

AS15004

SAE Technical Standards Board Rules provide that: "This report is published by SAE to advance the state of technical and engineering sciences. The use of this report is entirely voluntary, and its applicability and suitability for any particular use, including any patent infringement arising therefrom, is the sole responsibility of the user."

SAE reviews each technical report at least every five years at which time it may be reaffirmed, revised, or cancelled. SAE invites your written comments and suggestions.

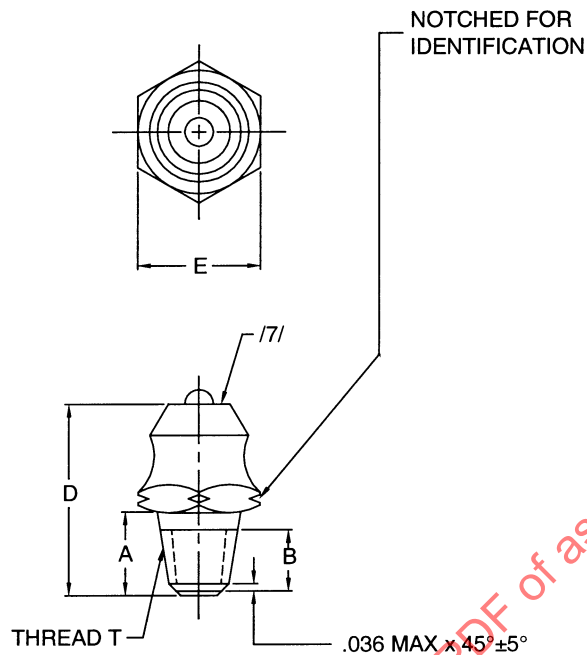


FIGURE 1 - FITTING, STRAIGHT

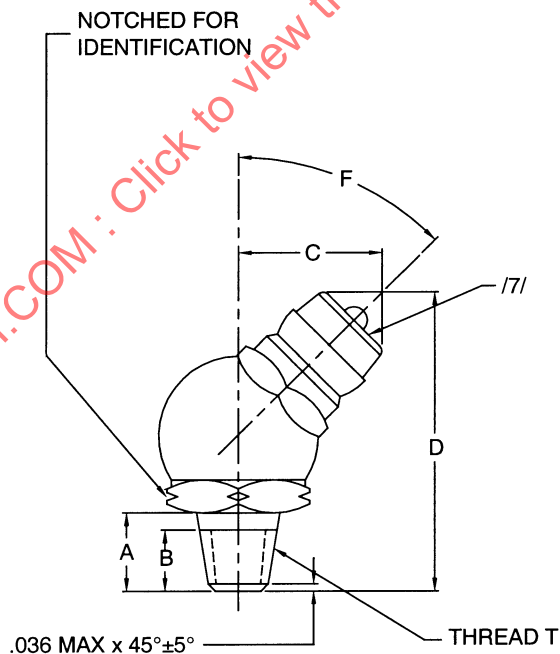
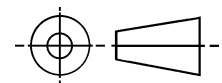


FIGURE 2 - FITTING, ELBOW



THIRD ANGLE PROJECTION



CUSTODIAN: SAE G-3/G-3B

PROCUREMENT SPECIFICATION: AS35411 /5/

SAE Aerospace
An SAE International Group

AEROSPACE STANDARD
FITTING, LUBRICATION, HYDRAULIC, SURFACE
CHECK, .250-28 TAPER THREADS, NICKEL-COPPER
ALLOY, TYPE IV

AS15004
SHEET 1 OF 3

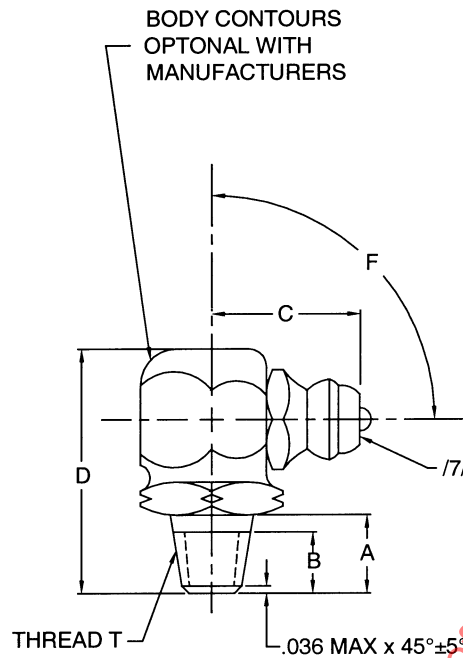


FIGURE 3 - FITTING, ELBOW, 90°

TABLE 1 - DIMENSIONS AND WEIGHTS

PART NUMBER	FIG.	THREAD T PER FED-STD-H28/2	A ± .031	B /6/ MAX	C MAX	D ± .062	E ± .003	F ± 5°	LB/100 APPROX. REF NICOP
AS15004-1	1	.250-28 UNS-2A	.107	.1094	—	.500	.312	—	
AS15004-2	2	.250-28 UNS-2A	.107	.1094	.406	.875	.375	45°	
AS15004-3	3	.250-28 UNS-2A	.107	.1094	.531	.750	.375	90°	

NOTES:

1. MATERIAL: NICKEL-COPPER ALLOY. SEE PROCUREMENT SPECIFICATION.
2. HEAT TREATMENT: NONE.
3. FINISH: BRIGHT DIPPED. SEE PROCUREMENT SPECIFICATION.
4. IDENTIFICATION: MARK PER AS478 METHOD 35D MANUFACTURER'S NAME, CAGE CODE OR TRADEMARK, AND PART NUMBER.
- 5/ PROCUREMENT SPECIFICATION: AS35411 EXCEPT AS SPECIFIED ON THIS STANDARD. USERS OF THIS STANDARD SHALL PROCURE THIS PRODUCT FROM ACCREDITED MANUFACTURER(S), OR THEIR ACCREDITED DISTRIBUTOR(S), AS LISTED IN THE PERFORMANCE REVIEW INSTITUTE (PRI) QUALIFIED MANUFACTURERS LIST (QML) FOR THIS TYPE OF PRODUCT.
- 6/ MINIMUM EFFECTIVE THREAD LENGTH.
- 7/ FITTING END IN ACCORDANCE WITH AS15000, STYLE OPTIONAL.
8. INTENDED USE: THIS PART IS INTENDED FOR USE IN LUBRICATING CONNECTIONS AT PRESSURES TO 6000 psi.
9. THIS STANDARD IS A CONVERSION OF MILITARY STANDARD MS15004, FITTINGS, LUBRICATION (HYDRAULIC) SURFACE CHECK, 1/4-28 TAPER THREADS, NICKEL-COPPER ALLOY, TYPE IV, AND IS NOT A WORD-FOR-WORD CONVERSION.
10. INTERPRETATION OF DRAWING PER ARP4296.
11. SURFACE TEXTURE: SYMBOLS PER ASME Y14.36; REQUIREMENTS PER ASME B46.1. UNLESS OTHERWISE SPECIFIED, MACHINED SURFACES TO BE 125 μ in Ra. SURFACES OF HEX FLATS MAY BE 250 μ in Ra.
12. BREAK EDGES .003 TO .015 UNLESS OTHERWISE SPECIFIED.