

REV.
A

SAE AS1652

RATIONALE

FEDERAL SUPPLY CLASS
4730

AS1652A HAS BEEN REAFFIRMED TO COMPLY WITH THE SAE FIVE-YEAR REVIEW POLICY.

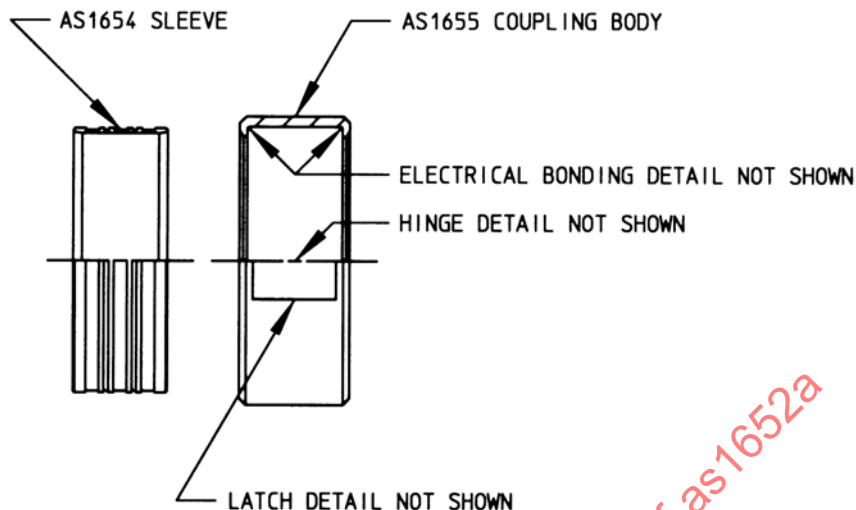


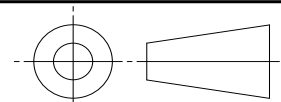
FIGURE 1 - COUPLING ASSEMBLY, EXPLODED VIEW

TABLE 1 - COUPLING ASSEMBLY WEIGHTS

BASIC NO. AS1652 /14/ SIZE CODE	NOM TUBE SIZE REF	LB/EA MAX ALUM	LB/EA MAX CRES	LB/EA MAX TI
08	.500	.039	.107	TBD
10	.625	.040	.114	TBD
12	.750	.051	.139	TBD
16	1.000	.062	.175	TBD
20	1.250	.069	.193	TBD
24	1.500	.078	.217	TBD
28	1.750	.084	.233	TBD
32	2.000	.100	.274	TBD
36	2.250	.114	.321	TBD
40	2.500	.126	.356	TBD
48	3.000	.178	.501	TBD
56	3.500	.215	.606	TBD
64	4.000	.289	.813	TBD

SAE values your input. To provide feedback
on this Technical Report, please visit
<http://www.sae.org/technical/standards/AS1652A>

THIRD ANGLE PROJECTION



CUSTODIAN: G-3/G-3A

PROCUREMENT SPECIFICATION: /5/ AS1650

SAE Aerospace
An SAE International Group

AEROSPACE STANDARD

COUPLING ASSEMBLY, THREADLESS - FLEXIBLE,
FIXED CAVITY, SELF-BONDING

SAE AS1652
SHEET 1 OF 2

REV.
A