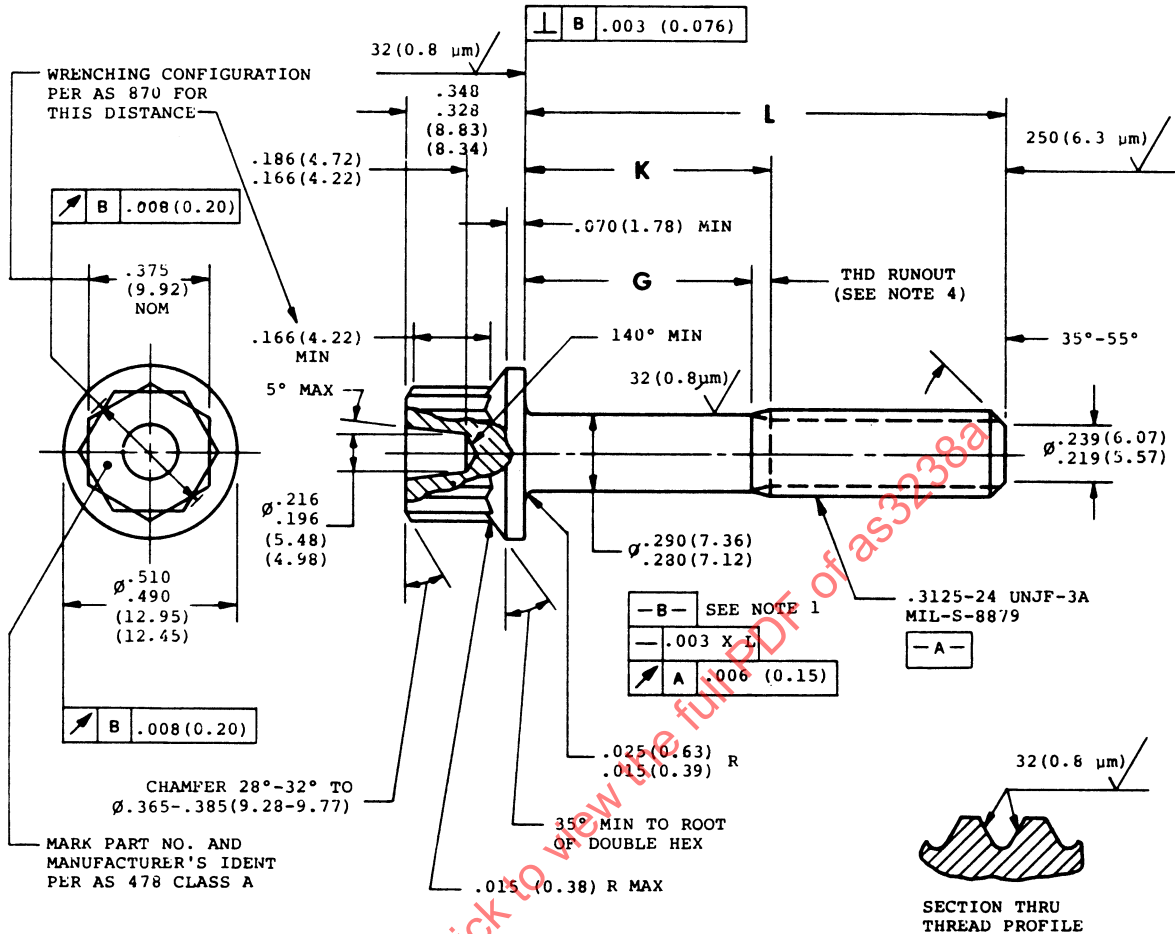


REV.
A

AS3238

SAE Technical Standards Board Rules provide that: "This report is published by SAE to advance the state of technical and engineering sciences. The use of this report is entirely voluntary, and its applicability and suitability for any particular use, including any patent infringement arising therefrom, is the sole responsibility of the user."
SAE reviews each technical report at least every five years at which time it may be reaffirmed, revised, or cancelled. SAE invites your written comments and suggestions.



SAENORM.COM : Click to view the full PDF of as3238a

PREPARED BY SAE COMMITTEE E-25, GENERAL STANDARDS FOR AEROSPACE PROPULSION SYSTEMS

SAE The Engineering Society
For Advancing Mobility
Land Sea Air and Space
INTERNATIONAL
400 Commonwealth Drive, Warrendale, PA 15096-0001

AEROSPACE STANDARD

BOLT, MACHINE-DOUBLE HEX EXTENDED
WASHER HEAD, PD SHANK, AMS 5662,
.3125-24 UNJF-3A

AS3238
SHEET 1 OF 3

**REV.
A**

REV.
A

AS3238

TABLE 1

PART NUMBER	L		G MIN		K MAX		APPROX MASS			
	INCH	mm	INCH	mm	INCH	mm	LB/100	kg/100		
AS3238-04	.490-	.510	12.45-	12.95	.025	0.64	.108	2.74	1.91	0.866
AS3238-05	.552-	.572	14.03-	14.52	.025	0.64	.108	2.74	2.03	0.923
AS3238-06	.615-	.635	15.63-	16.12	.025	0.64	.108	2.74	2.15	0.975
AS3238-07	.678-	.698	17.23-	17.72	.025	0.64	.108	2.74	2.26	1.026
AS3238-08	.740-	.760	18.80-	19.30	.025	0.64	.108	2.74	2.39	1.083
AS3238-09	.802-	.822	20.38-	20.87	.025	0.64	.108	2.74	2.50	1.135
AS3238-10	.865-	.885	21.98-	22.47	.025	0.64	.108	2.74	2.63	1.191
AS3238-11	.928-	.948	23.58-	24.07	.025	0.64	.108	2.74	2.74	1.243
AS3238-12	.990-	1.010	25.15-	25.65	.025	0.64	.125	3.17	2.87	1.299
AS3238-13	1.052-	1.072	26.73-	27.22	.044	1.12	.188	4.77	2.98	1.351
AS3238-14	1.115-	1.135	28.33-	28.82	.107	2.72	.250	6.35	3.09	1.403
AS3238-15	1.178-	1.198	29.93-	30.42	.170	4.32	.312	7.92	3.22	1.460
AS3238-16	1.240-	1.260	31.50-	32.00	.232	5.90	.375	9.52	3.33	1.511
AS3238-17	1.302-	1.322	33.08-	33.57	.294	7.47	.438	11.12	3.46	1.568
AS3238-18	1.365-	1.385	34.68-	35.17	.357	9.07	.500	12.70	3.57	1.620
AS3238-19	1.428-	1.448	36.28-	36.77	.420	10.67	.562	14.27	3.70	1.676
AS3238-20	1.490-	1.510	37.85-	38.35	.482	12.25	.625	15.87	3.81	1.728
AS3238-21	1.552-	1.572	39.43-	39.92	.544	13.82	.688	17.47	3.93	1.784
AS3238-22	1.615-	1.635	41.03-	41.52	.607	15.42	.750	19.05	4.05	1.836
AS3238-23	1.678-	1.698	42.63-	43.12	.670	17.02	.812	20.62	4.16	1.888
AS3238-24	1.740-	1.760	44.20-	44.70	.732	18.60	.875	22.22	4.29	1.945
AS3238-25	1.802-	1.822	45.78-	46.27	.794	20.17	.938	24.82	4.40	1.996
AS3238-26	1.865-	1.885	47.38-	47.87	.857	21.77	1.000	25.40	4.53	2.053
AS3238-27	1.928-	1.948	48.98-	49.47	.920	23.37	1.062	26.97	4.64	2.105
AS3238-28	1.990-	2.010	50.55-	51.05	.982	24.95	1.125	28.57	4.76	2.161
AS3238-29	2.115-	2.135	53.73-	54.22	1.107	28.12	1.250	31.75	5.00	2.269
AS3238-30	2.240-	2.260	56.90-	57.40	1.232	31.30	1.375	34.92	5.23	2.373
AS3238-31	2.365-	2.385	60.08-	60.57	1.357	34.47	1.500	38.10	5.47	2.481
AS3238-32	2.490-	2.510	63.25-	63.75	1.482	37.65	1.625	41.27	5.71	2.590
AS3238-33	2.615-	2.635	66.43-	66.92	1.607	40.82	1.750	44.45	5.95	2.698
AS3238-34	2.740-	2.760	69.60-	70.10	1.732	44.00	1.875	47.62	6.19	2.806
AS3238-35	2.865-	2.885	72.78-	73.27	1.857	47.17	2.000	50.80	6.43	2.914
AS3238-36	2.990-	3.010	75.95-	76.45	1.982	50.35	2.125	53.97	6.66	3.023
AS3238-37	3.115-	3.135	79.13-	79.62	2.107	53.52	2.250	57.15	6.90	3.131
AS3238-38	3.240-	3.260	82.30-	82.80	2.232	56.70	2.375	60.32	7.14	3.239
AS3238-39	3.365-	3.385	85.48-	85.97	2.357	59.87	2.500	63.50	7.37	3.343
AS3238-40	3.490-	3.510	88.65-	89.15	2.482	63.05	2.625	66.67	7.61	3.451
AS3238-41	3.615-	3.635	91.83-	92.32	2.607	66.22	2.750	69.85	7.85	3.559
AS3238-42	3.740-	3.760	95.00-	95.50	2.732	69.40	2.875	73.02	8.09	3.668
AS3238-43	3.865-	3.885	98.18-	98.67	2.857	72.57	3.000	76.20	8.33	3.776
AS3238-44	3.990-	4.010	101.35-	101.85	2.982	75.75	3.125	79.37	8.56	3.884
AS3238-45	4.115-	4.135	104.53-	104.52	3.107	78.92	3.250	82.55	8.80	3.993
AS3238-46	4.240-	4.260	107.70-	108.20	3.232	82.10	3.375	85.72	9.04	4.101
AS3238-47	4.365-	4.385	110.88-	111.37	3.357	85.27	3.500	88.90	9.28	4.209
AS3238-48	4.490-	4.510	114.05-	114.55	3.482	88.45	3.625	92.07	9.51	4.313
AS3238-49	4.615-	4.635	117.23-	117.72	3.607	91.62	3.750	95.25	9.75	4.421
AS3238-50	4.740-	4.760	120.40-	120.90	3.732	94.80	3.875	98.42	9.99	4.529
AS3238-51	4.865-	4.885	123.58-	124.07	3.857	97.97	4.000	101.60	10.22	4.638
AS3238-52	4.990-	5.010	126.75-	127.25	3.982	101.15	4.125	104.77	10.46	4.746
AS3238-53	5.115-	5.135	129.93-	130.42	4.107	104.32	4.250	107.95	10.70	4.854
AS3238-54	5.240-	5.260	133.10-	133.60	4.232	107.50	4.375	111.12	10.94	4.963
AS3238-55	5.365-	5.385	136.28-	136.77	4.357	110.67	4.500	114.30	11.18	5.071
AS3238-56	5.490-	5.510	139.45-	139.95	4.482	113.85	4.625	117.47	11.42	5.179
AS3238-57	5.615-	5.635	142.63-	143.12	4.607	117.02	4.750	120.65	11.66	5.287
AS3238-58	5.740-	5.760	145.80-	146.30	4.732	120.20	4.875	123.82	11.89	5.391
AS3238-59	5.865-	5.885	148.98-	149.47	4.857	123.37	5.000	127.00	12.13	5.502
AS3238-60	5.990-	6.010	152.15-	152.65	4.982	126.55	5.125	130.17	12.37	5.611