

SAE Technical Standards Board Rules provide that: "This report is published by SAE to advance the state of technical and engineering sciences. The use of this report is entirely voluntary, and its applicability and suitability for any particular use, including any patent infringement arising therefrom, is the sole responsibility of the user."

SAE reviews each technical report at least every five years at which time it may be revised, reaffirmed, stabilized, or cancelled. SAE invites your written comments and suggestions.

REV.
D

AS9902

FEDERAL SUPPLY CLASS
5365

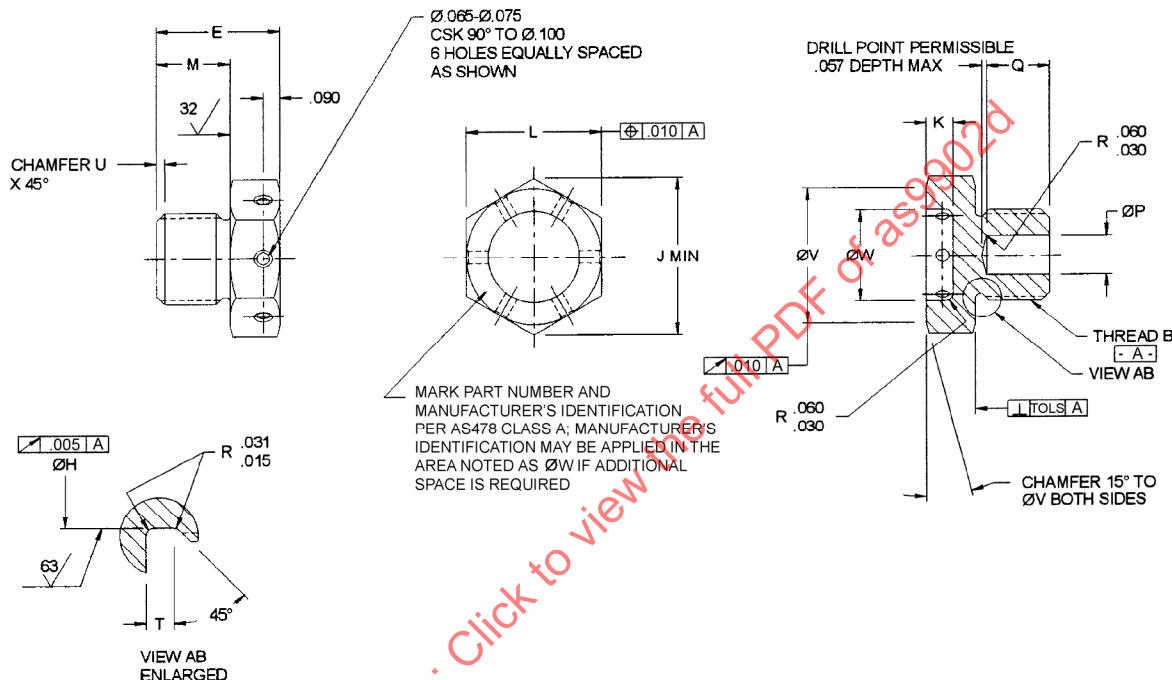
RATIONALE

AS9902D HAS BEEN REAFFIRMED TO COMPLY WITH THE SAE FIVE-YEAR REVIEW POLICY.

NOTICE

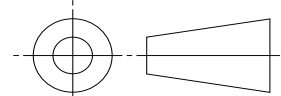
THE INITIAL SAE PUBLICATION OF THIS DOCUMENT WAS TAKEN DIRECTLY FROM U.S. MILITARY STANDARD MS9902A, AMENDMENT 1. THIS STANDARD RETAINS THE SAME PART NUMBERS ESTABLISHED BY THE ORIGINAL MILITARY DOCUMENT.

ANY REQUIREMENTS ASSOCIATED WITH QUALIFIED PRODUCTS LIST (QPL) MAY CONTINUE TO BE MANDATORY FOR DOD CONTRACTS. REQUIREMENTS RELATING TO QPL'S HAVE NOT BEEN ADOPTED BY THE SAE FOR THIS STANDARD AND ARE NOT PART OF THIS SAE DOCUMENT.



SAE values your input. To provide feedback on this Technical Report, please visit <http://www.sae.org/technical/standards/AS9902D>

THIRD ANGLE PROJECTION



CUSTODIAN: E-25

PROCUREMENT SPECIFICATION:



AEROSPACE STANDARD

PLUG, MACHINE THREAD DRILLED,
PREFORMED PACKING, AS8879
THREAD (UNS S34700)

AS9902
SHEET 1 OF 3

REV.
D

Copyright 2015 SAE International
All rights reserved. No part of this publication may be reproduced, stored in a retrieval system or transmitted, in any form or by any means, electronic, mechanical, photocopying, recording, or otherwise, without the prior written permission of SAE.

TO PLACE A DOCUMENT ORDER: Tel: 877-606-7323 (inside USA and Canada)
Fax: 724-776-0790

Tel: +1 724-776-4970 (outside USA)
Email: CustomerService@sae.org

SAE WEB ADDRESS: <http://www.sae.org>

ISSUED 1999-10 REVISED 2010-07 REAFFIRMED 2015-04

TABLE 1 - PART NUMBERS AND DIMENSIONS

PART NUMBER /7/	B THREAD PER AS8879	E	ØH /5/	J MIN	K	L	M
MS9902-01	.2500-28 UNJF-3A	.550 - .570	.193 - .198	.482	.140 - .160	.430 - .439	.310 - .330
MS9902-02	.3125-24 UNJF-3A	.590 - .610	.247 - .252	.522	.140 - .160	.553 - .564	.350 - .370
MS9902-03	.3750-24 UNJF-3A	.590 - .610	.309 - .314	.694	.140 - .160	.616 - .627	.350 - .370
MS9902-04	.4375-20 UNJF-3A	.650 - .670	.361 - .366	.766	.140 - .160	.679 - .690	.390 - .410
MS9902-05	.5000-20 UNJF-3A	.660 - .680	.423 - .428	.837	.140 - .160	.741 - .752	.390 - .410
MS9902-06	.5625-18 UNJF-3A	.670 - .690	.478 - .483	.907	.140 - .160	.803 - .814	.390 - .410
MS9902-07	.6250-18 UNJF-3A	.720 - .740	.541 - .546	.978	.150 - .170	.865 - .877	.430 - .450
MS9902-08	.7500-16 UNJF-3A	.720 - .740	.657 - .662	1.121	.150 - .170	.990 - 1.002	.430 - .450
MS9902-09	.8125-16 UNJ-3A	.730 - .750	.719 - .724	1.191	.150 - .170	1.052 - 1.064	.430 - .450
MS9902-10	.8750-14 UNJF-3A	.730 - .750	.770 - .775	1.263	.150 - .170	1.115 - 1.127	.430 - .450
MS9902-11	1.0000-12 UNJF-3A	.770 - .790	.879 - .884	1.475	.180 - .200	1.301 - 1.314	.430 - .450
MS9902-12	1.0625-12 UNJ-3A	.820 - .840	.942 - .947	1.475	.190 - .210	1.301 - 1.314	.470 - .490
MS9902-14	1.1875-12 UNJ-3A	.820 - .840	1.067 - 1.072	1.619	.190 - .210	1.427 - 1.440	.470 - .490
MS9902-16	1.3125-12 UNJ-3A	.830 - .850	1.192 - 1.197	1.833	.190 - .210	1.614 - 1.627	.470 - .490
MS9902-18	1.5000-12 UNJF-3A	.830 - .850	1.379 - 1.384	1.974	.190 - .210	1.738 - 1.752	.470 - .490
MS9902-20	1.6250-12 UNJ-3A	.840 - .860	1.504 - 1.509	2.117	.190 - .210	1.863 - 1.877	.470 - .490
MS9902-24	1.8750-12 UNJ-3A	.850 - .870	1.753 - 1.758	2.402	.190 - .210	2.113 - 2.127	.470 - .490
MS9902-28	2.2500-12 UNJ-3A	.860 - .880	2.128 - 2.133	2.830	.190 - .210	2.488 - 2.502	.470 - .490
MS9902-32	2.5000-12 UNJ-3A	.860 - .880	2.378 - 2.383	3.115	.190 - .210	2.738 - 2.752	.470 - .490

PART NUMBER /7/	ØP	Q	TOL S	T	U	ØV	ØW	WEIGHT LB/100 APPROX REF
MS9902-01	-	-	.003	.063 - .078	.020 - .050	.428 - .448	.240 - .260	1.183
MS9902-02	-	-	.003	.063 - .078	.020 - .050	.552 - .572	.302 - .322	2.055
MS9902-03	-	-	.003	.063 - .078	.020 - .050	.615 - .635	.365 - .385	2.646
MS9902-04	-	-	.003	.075 - .090	.030 - .060	.678 - .698	.428 - .448	3.657
MS9902-05	.209 - .229	.330 - .350	.003	.075 - .090	.030 - .060	.740 - .760	.490 - .510	4.277
MS9902-06	.209 - .229	.330 - .350	.003	.083 - .098	.040 - .070	.802 - .822	.552 - .572	5.307
MS9902-07	.302 - .322	.370 - .390	.003	.083 - .098	.040 - .070	.865 - .885	.615 - .635	6.334
MS9902-08	.428 - .448	.390 - .410	.003	.094 - .109	.040 - .070	.990 - 1.010	.740 - .760	7.995
MS9902-09	.490 - .510	.390 - .410	.003	.094 - .109	.040 - .070	1.052 - 1.072	.802 - .822	9.199
MS9902-10	.538 - .558	.390 - .410	.003	.107 - .122	.050 - .080	1.115 - 1.135	.865 - .885	10.122
MS9902-11	.647 - .667	.390 - .410	.005	.125 - .140	.050 - .080	1.302 - 1.322	.990 - 1.010	14.608
MS9902-12	.709 - .729	.390 - .410	.005	.125 - .140	.050 - .080	1.302 - 1.322	.990 - 1.010	15.891
MS9902-14	.834 - .854	.390 - .410	.005	.125 - .140	.050 - .080	1.428 - 1.448	1.115 - 1.135	18.582
MS9902-16	.959 - .979	.390 - .410	.005	.125 - .140	.050 - .080	1.615 - 1.635	1.302 - 1.322	23.416
MS9902-18	1.146 - 1.166	.390 - .410	.005	.125 - .140	.050 - .080	1.740 - 1.760	1.428 - 1.448	27.369
MS9902-20	1.271 - 1.291	.390 - .410	.005	.125 - .140	.050 - .080	1.865 - 1.885	1.552 - 1.572	31.827
MS9902-24	1.521 - 1.541	.390 - .410	.005	.125 - .140	.050 - .080	2.114 - 2.134	1.802 - 1.822	40.949
MS9902-28	1.896 - 1.916	.390 - .410	.005	.125 - .140	.050 - .080	2.490 - 2.510	2.178 - 2.198	56.454
MS9902-32	2.146 - 2.166	.390 - .410	.005	.125 - .140	.050 - .080	2.740 - 2.760	2.428 - 2.448	67.139



AEROSPACE STANDARD

PLUG, MACHINE THREAD DRILLED,
PREFORMED PACKING, AS8879
THREAD (UNS S34700)

AS9902
SHEET 2 OF 3

REV.
D