

Fifth Wheel Kingpin, Heavy Duty – Commercial Trailers and Semitrailers – SAE J848a

SAE Recommended Practice
Last Revised July 1966

THIS IS A PREPRINT WHICH IS
SUBJECT TO REVISIONS AND
CORRECTIONS. THE FINAL
VERSION WILL APPEAR IN THE
1983 EDITION OF THE SAE
HANDBOOK.

SAE *The Engineering
Resource For
Advancing Mobility*

PREPRINT

**S. A. E.
LIBRARY**

SAENORM.COM : Click to view the full PDF of j848a_196607

FIFTH WHEEL KINGPIN, HEAVY DUTY— COMMERCIAL TRAILERS AND SEMITRAILERS—SAE J848a

SAE Recommended Practice

Report of Transportation and Maintenance and Truck and Bus Technical Committees approved June 1963 and last revised July 1966.

This SAE Recommended Practice SAE kingpin applies to fifth wheel kingpins for heavy duty commercial trailers and semitrailers, used on off highway operation or in hauling heavy loads.

NOTE: Performance capacity of kingpin and its attaching structure shall be designed to withstand a drawbar pull of 120,000 lb, with load applied at any point of the 3.5 diameter surface, without residual deformation to kingpin or structure.

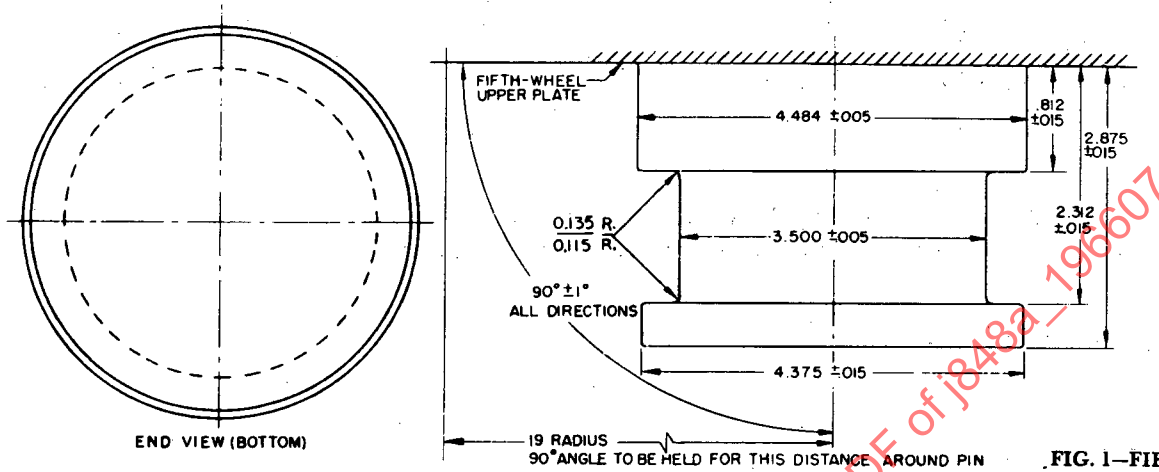


FIG. 1—FIFTH WHEEL KINGPIN

SAENORM.COM :: Click to view the full PDF of J848a-196607