



# UL 737

## STANDARD FOR SAFETY

### Fireplace Stoves

ULNORM.COM : Click to view the full PDF of UL 737 2025

ULNORM.COM : Click to view the full PDF of UL 737 2025

UL Standard for Safety for Fireplace Stoves, UL 737

Eleventh Edition, Dated February 28, 2025

### **Summary of Topics**

***This new Eleventh Edition of ANSI/UL 737 dated February 28, 2025 incorporates editorial changes including renumbering and reformatting to align with current style.***

The revised requirements are substantially in accordance with Proposal(s) on this subject dated November 22, 2024.

All rights reserved. No part of this publication may be reproduced, stored in a retrieval system, or transmitted in any form by any means, electronic, mechanical photocopying, recording, or otherwise without prior permission of ULSE Inc. (ULSE).

ULSE provides this Standard "as is" without warranty of any kind, either expressed or implied, including but not limited to, the implied warranties of merchantability or fitness for any purpose.

In no event will ULSE be liable for any special, incidental, consequential, indirect or similar damages, including loss of profits, lost savings, loss of data, or any other damages arising out of the use of or the inability to use this Standard, even if ULSE or an authorized ULSE representative has been advised of the possibility of such damage. In no event shall ULSE's liability for any damage ever exceed the price paid for this Standard, regardless of the form of the claim.

Users of the electronic versions of UL's Standards for Safety agree to defend, indemnify, and hold ULSE harmless from and against any loss, expense, liability, damage, claim, or judgment (including reasonable attorney's fees) resulting from any error or deviation introduced while purchaser is storing an electronic Standard on the purchaser's computer system.

ULNORM.COM : Click to view the full PDF of UL 737 2025

No Text on This Page

ULNORM.COM : Click to view the full PDF of UL 737 2025

FEBRUARY 28, 2025



ANSI/UL 737-2025

1

## UL 737

### Standard for Fireplace Stoves

First Edition – June, 1968  
Second Edition – November, 1971  
Third Edition – April, 1975  
Fourth Edition – May, 1978  
Fifth Edition – March, 1982  
Sixth Edition – September, 1988  
Seventh Edition – March, 1995  
Eighth Edition – May, 1996  
Ninth Edition – November, 2007  
Tenth Edition – April, 2011

### Eleventh Edition

February 28, 2025

This ANSI/UL Standard for Safety consists of the Eleventh Edition.

The most recent designation of ANSI/UL 737 as an American National Standard (ANSI) occurred on February 28, 2025. ANSI approval for a standard does not include the Cover Page, Transmittal Pages, and Title Page.

Comments or proposals for revisions on any part of the Standard may be submitted to ULSE at any time. Proposals should be submitted via a Proposal Request in the Collaborative Standards Development System (CSDS) at <https://csds.ul.com>

Our Standards for Safety are copyrighted by ULSE Inc. Neither a printed nor electronic copy of a Standard should be altered in any way. All of our Standards and all copyrights, ownerships, and rights regarding those Standards shall remain the sole and exclusive property of ULSE Inc.

© 2025 ULSE Inc. All rights reserved.

No Text on This Page

ULNORM.COM : Click to view the full PDF of UL 737 2025

## CONTENTS

### INTRODUCTION

1	Scope .....	7
2	Components .....	7
2.1	General .....	7
2.2	Attachment plugs, receptacles, connectors, and terminals .....	8
2.3	Boxes and raceways .....	9
2.4	Capacitors and filters .....	10
2.5	Controls .....	10
2.6	Cords, cables, and internal wiring .....	11
2.7	Overcurrent protection .....	12
2.8	Polymeric materials and enclosures .....	12
2.9	Power supplies .....	12
2.10	Printed wiring boards .....	12
2.11	Switches .....	13
2.12	Transformers .....	13
3	Referenced Publications .....	14
4	Units of Measurement .....	17
5	Terminology .....	17
6	Glossary .....	17
7	Materials .....	17
8	Assembly .....	19
8.1	General .....	19
8.2	Flue damper .....	20
8.3	Fire screen .....	20
8.4	Flue collar .....	20
8.5	Radiation shield and baffle .....	20
8.6	Thermostatic control .....	20
8.7	Grate .....	21
8.8	Separable handle .....	21
8.9	Barometric draft regulator .....	21
8.10	Combustion air duct system .....	21

### PERFORMANCE

9	General .....	21
10	Test Installation .....	22
11	Temperature Measurement .....	27
12	Fire Tests .....	32
13	Radiant Fire Test .....	37
14	Brand Fire Test .....	40
15	Flash Fire Test .....	44
16	Glazing Test .....	45
16.1	General .....	45
16.2	Impact test .....	45
16.3	Water shock test .....	46
17	Strength Tests .....	46
17.1	Fire chamber .....	46
17.2	Chimney connector .....	51
18	Stability Test .....	53

## FIREPLACE STOVES FOR USE IN MOBILE HOMES

19	Installation .....	54
20	Chimney .....	54
21	Spark Arrester .....	54
22	Combustion Air Inlet .....	55
23	Test Structure .....	55
24	Test Method .....	56
25	Drop Test .....	58

## BLOWER ASSEMBLY

### GENERAL

26	General .....	58
----	---------------	----

### CONSTRUCTION

27	Enclosure .....	58
27.1	General .....	58
27.2	Mechanical protection .....	62
27.3	Electrical protection .....	63
27.4	Doors and covers .....	66
28	Mounting of Electrical Components .....	67
29	Field-Installed Blower Assemblies .....	67
30	Field Supply Connections .....	68
30.1	Permanently-connected units .....	68
30.2	Cord-connected units .....	70
31	Grounding .....	71
31.1	General .....	71
31.2	Permanently-connected units .....	71
31.3	Cord-connected units .....	72
32	Internal Wiring .....	72
32.1	General .....	72
32.2	Methods .....	73
33	Separation of Circuits .....	75
34	Bonding for Grounding .....	76
35	Capacitors .....	77
36	Insulating Material .....	78
37	Motors and Motor Overcurrent (Overload) Protection .....	78
38	Switches and Controllers .....	82
39	Transformers .....	82
40	Spacings .....	83

### PERFORMANCE

41	Test Voltages .....	85
42	Temperature Measurements .....	85
42.1	Thermocouple method .....	85
42.2	Change-in-resistance method .....	85
43	Input Test .....	86
44	Temperature Test – Electrical Components .....	86
45	Dielectric Voltage-Withstand Test .....	86
46	Leakage Current Test .....	87
47	Stalled Motor Test .....	89



48	Strain Relief Test .....	90
48.1	Power supply cord .....	90
48.2	Field wiring leads .....	90
49	Push-Back Relief Test .....	90
50	Short-Circuit Test .....	90
51	Knockout Test .....	91

## MANUFACTURING AND PRODUCTION TESTS

52	Production Line Dielectric Voltage-Withstand Test .....	91
53	Production Line Grounding Continuity Test .....	91

## MARKINGS

54	General .....	92
55	Marking Permanence Tests .....	94
55.1	General .....	94
55.2	Air oven-aging test .....	94
55.3	Humidity test .....	94
55.4	Unusual-condition exposure test .....	95

## INSTALLATION INSTRUCTIONS

56	Installation and Operating Instructions .....	95
56.1	General .....	95
56.2	Installation instructions .....	95
56.3	Operating instructions .....	97

No Text on This Page

ULNORM.COM : Click to view the full PDF of UL 737 2025

## INTRODUCTION

### 1 Scope

1.1 These requirements cover fireplace stoves that are freestanding assemblies having fire chambers intended to be operated open to the room or, when equipped with doors, to be operated with the doors either open or closed.

1.2 Fireplace stoves covered by these requirements are intended for attachment to a residential chimney capable of being used for use with low heat appliances and intended for use with solid wood or coal fuels.

1.3 Fireplace stoves are intended for installation in accordance with the Standard for Chimneys, Fireplaces, Vents, and Solid Fuel Burning Appliances, NFPA 211, and in accordance with codes such as the International Mechanical Code, International Residential Code, and the Uniform Mechanical Code.

1.4 Fireplace stoves intended for use in mobile homes are to be installed in accordance with the Mobile Home Construction and Safety Standards published by the Department of Housing and Urban Development (HUD).

1.5 The product shall include:

- a) A field-installed cord-connected or permanently-connected blower assembly; and
- b) Other field-installed electrical accessories, rated at 250 volts or less, and intended to be employed in locations in accordance with the National Electrical Code, NFPA 70.

### 2 Components

#### 2.1 General

2.1.1 A component of a product covered by this Standard shall:

- a) Comply with the requirements for that component as indicated in [2.2](#) – [2.12](#);
- b) Be used in accordance with its rating(s) established for the intended conditions of use;
- c) Be used within its established use limitations or conditions of acceptability;
- d) Additionally comply with the applicable requirements of this end product standard; and
- e) Not contain mercury.

NOTE: Specific components are incomplete in construction features or restricted in performance capabilities. Such components are intended for use only under limited conditions, such as certain temperatures not exceeding specified limits, and shall be used only under those specific conditions.

*Exception No. 1: A component of a product covered by this Standard is not required to comply with a specific component requirement that:*

- a) Involves a feature or characteristic not required in the application of the component in the product;*
- b) Is superseded by a requirement in this Standard; or*
- c) Is separately investigated when forming part of another component, provided the component is used within its established ratings and limitations.*

*Exception No. 2: A component complying with a UL component standard other than those cited in [2.2 – 2.12](#) is acceptable if:*

- a) The component also complies with the applicable component standard of [2.2 – 2.12](#); or*
- b) The component standard:*
  - 1) Is compatible with the ampacity and overcurrent protection requirements NFPA 70, where appropriate;*
  - 2) Considers long-term thermal properties of polymeric insulating materials in accordance with UL 746B; and*
  - 3) Any use limitations of the other component standard is identified and appropriately accommodated in the end use application. For example, a component used in a household application, but intended for industrial use and complying with the relevant component standard may assume user expertise not common in household applications.*

2.1.2 A component that is also intended to perform other functions, such as over current protection, ground-fault circuit-interruption, surge suppression, any other similar functions, or any combination thereof, shall comply additionally with the requirements of the applicable UL standard(s) that cover devices that provide those functions.

*Exception: Where these other functions are not required for the application and not identified as part of markings, instructions, or packaging for the appliance, the additional component standard(s) need not be applied.*

2.1.3 A component not anticipated by the requirements of this Standard, not specifically covered by the component standards of [2.2 – 2.12](#), and that involves a potential risk of electric shock, fire, or personal injury, shall be additionally investigated in accordance with the applicable UL standard, and shall comply with [2.1.1](#) (b) – (d).

2.1.4 With regard to a component being additionally investigated, reference to construction and performance requirements in another UL end product standard is appropriate where that standard anticipates normal and abnormal use conditions consistent with the application of this Standard.

## **2.2 Attachment plugs, receptacles, connectors, and terminals**

2.2.1 Attachment plugs, receptacles, appliance couplers, appliance inlets (motor attachment plugs) shall comply with UL 498.

*Exception No. 1: Attachment plugs and appliance couplers integral to cord sets or power supply cords are covered under the requirements of UL 817 and need not comply with UL 498.*

*Exception No. 2: Plugs, receptacles, connectors, and terminals for specialty applications (e.g. data processing or communications) and located in a low-voltage circuit, complying with Section [33](#), Separation of Circuits, and not involving the risk of fire or personal injury need not comply with UL 758.*

2.2.2 Quick-connect terminals, both connectors and tabs, for use with one or two 22 – 10 AWG copper conductors, having nominal widths of 2.8, 3.2, 4.8, 5.2, and 6.3 mm (0.110, 0.125, 0.187, 0.205, and 0.250 inch), intended for internal wiring connections in appliances shall comply with UL 310.

*Exception No. 1: Other sizes of quick-connect terminals shall be investigated with respect to crimp pull out, insertion-withdrawal, temperature rise, and all tests shall be conducted in accordance with UL 310.*

*Exception No. 2: Plugs, receptacles, connectors, and terminals for specialty applications (e.g. data processing or communications) and located in a low-voltage circuit, complying with Section 33, Separation of Circuits, and not involving the risk of fire or personal injury need not comply with UL 758.*

2.2.3 Wire connectors shall comply with UL 486A-486B.

*Exception: Plugs, receptacles, connectors, and terminals for specialty applications (e.g. data processing or communications) and located in a low-voltage circuit, complying with Section 33, Separation of Circuits, and not involving the risk of fire or personal injury need not comply with UL 758.*

2.2.4 Splicing wire connectors shall comply with UL 486C.

*Exception: Plugs, receptacles, connectors, and terminals for specialty applications (e.g. data processing or communications) and located in a low-voltage circuit, complying with Section 33, Separation of Circuits, and not involving the risk of fire or personal injury need not comply with UL 758.*

2.2.5 Equipment wiring terminals for use with all alloys of copper, aluminum, or copper-clad aluminum conductors, shall comply with UL 486E.

*Exception: Plugs, receptacles, connectors, and terminals for specialty applications (e.g. data processing or communications) and located in a low-voltage circuit, complying with Section 33, Separation of Circuits, and not involving the risk of fire or personal injury need not comply with UL 758.*

2.2.6 Terminal blocks shall comply with UL 1059, and, if applicable, be suitably rated for field wiring.

*Exception No. 1: A fabricated parts performing the function of a terminal block need not comply with UL 1059 if the part complies with the requirements of Section 30, Field Supply Connections; Section 32, Internal Wiring; and Section 36, Insulating Material.*

*Exception No. 2: Plugs, receptacles, connectors, and terminals for specialty applications (e.g. data processing or communications) and located in a low-voltage circuit, complying with Section 33, Separation of Circuits, and not involving the risk of fire or personal injury need not comply with UL 758.*

2.2.7 Female devices (such as receptacles, appliance couplers, and connectors) that are intended, or that may be used, to interrupt current in the end product, shall be suitably rated for current interruption of the specific type of load, when evaluated with its mating plug or connector. For example, an appliance coupler that can be used to interrupt the current of a motor load shall have a suitable horsepower rating when tested with its mating plug.

*Exception: Plugs, receptacles, connectors, and terminals for specialty applications (e.g. data processing or communications) and located in a low-voltage circuit, complying with Section 33, Separation of Circuits, and not involving the risk of fire or personal injury need not comply with UL 758.*

## 2.3 Boxes and raceways

2.3.1 Electrical boxes and the associated bushings and fittings, and raceways, of the types specified in Chapter 3 of NFPA 70 and that comply with the relevant UL standard (such as UL 514A, UL 514C, UL 514D) and 2.1.1 – 2.1.4 are considered to fulfill the requirements of this Standard.

*Exception: Enclosures complying with Section 27, Enclosure, of this end product standard is considered to meet the intent of this requirement.*

## 2.4 Capacitors and filters

2.4.1 The component requirements for a capacitor are not specified. A capacitor complying with UL 810, is considered to fulfill the requirements of [18.1](#).

2.4.2 Electromagnetic interference filters with integral enclosures that comply with UL 1283, are considered to fulfill the requirements of [18.1](#).

*Exception: A capacitor that complies with Section [35](#), Capacitors, of this end product standard is considered to meet the intent of this requirement.*

## 2.5 Controls

### 2.5.1 General

2.5.1.1 Auxiliary controls shall be evaluated using the applicable requirements of this end product standard.

2.5.1.2 Operating (regulating) controls shall be evaluated using the applicable component standard requirements specified in [2.5.2](#) – [2.5.5](#), and if applicable unless otherwise specified in this end product standard. Operating controls that rely upon software for the normal operation of the end product where deviation or drift of the control may result in a hazard, such as a speed control unexpectedly changing its output, shall comply with:

- a) UL 991; and UL 1998; or
- b) UL 60730-1.

2.5.1.3 Protective (limiting) controls shall be evaluated using the applicable component standard requirements specified in [2.5.2.2](#).

### 2.5.2 Electromechanical and electronic controls

2.5.2.1 An operating (regulating) control, other than as specified in [2.5.3](#) – [2.5.5](#), shall comply with:

- a) UL 244A;
- b) UL 873; or
- c) UL 60730-1.

2.5.2.2 Protective (limiting) controls shall comply with UL 353.

### 2.5.3 Motor and speed controls

2.5.3.1 A control used to start, stop, regulate or control the speed of a motor shall comply with the:

- a) UL 244A;
- b) UL 873;
- c) UL 508;
- d) UL 61800-5-1; or

e) UL 60730-1.

#### 2.5.4 Temperature controls

2.5.4.1 A temperature control shall comply with the:

- a) UL 244A;
- b) UL 873;
- c) UL 508; or
- d) UL 60730-1 and UL 60730-2-9.

2.5.4.2 A temperature sensing positive temperature coefficient (PTC) or negative temperature coefficient (NTC) thermistor, that performs the same function as an operating or protective control shall comply with UL 1434.

2.5.4.3 A thermal cutoff shall comply with UL 60691.

#### 2.5.5 Timer controls

2.5.5.1 A timer control shall comply with the:

- a) UL 244A; or
- b) UL 60730-1 and UL 60730-2-7.

#### 2.6 Cords, cables, and internal wiring

2.6.1 A cord set or power supply cord shall comply with UL 817.

2.6.2 Flexible cords and cables shall comply with UL 62. Flexible cord and cables are considered to fulfill this requirement when preassembled in a cord set or power supply cord complying with UL 817.

2.6.3 Internal wiring composed of insulated conductors shall comply with UL 758.

*Exception No. 1: Insulated conductors need not comply with UL 758 if they comply with one of the following:*

- a) UL 44;
- b) UL 83;
- c) UL 66; or
- d) the appropriate UL standard(s) for other insulated conductor types specified in Chapter 3, Wiring Methods and Materials, of NFPA 70.

*Exception No. 2: Insulated conductors for specialty applications (e.g. data processing or communications) and located in a low-voltage circuit, complying with Section 33, Separation of Circuits, and not involving the risk of fire or personal injury need not comply with UL 758.*

## 2.7 Overcurrent protection

2.7.1 Fuses shall comply with UL 248-1; and the applicable UL 248 Part 2 (e.g. UL 248-5). Defined use fuses that comply with UL 248-1 and another appropriate UL standard for the fuse are considered to fulfill this requirement.

2.7.2 Fuseholders shall comply with UL 4248-1, and the applicable Part 2 (e.g. UL 4248-9).

2.7.3 Circuit breakers shall comply with UL 489.

*Exception: Circuit breakers used in telecommunications circuitry that comply with UL 489A, need not comply with UL 489.*

2.7.4 Circuit breakers having integral ground fault circuit interrupter capability for protection against electrical shock shall additionally comply with UL 943.

2.7.5 Supplementary protectors shall comply with UL 1077.

2.7.6 Fusing resistors shall comply with UL 1412.

## 2.8 Polymeric materials and enclosures

2.8.1 Unless otherwise specified in this end product standard, polymeric electrical insulating materials and enclosures shall comply with the applicable requirements of UL 746C.

2.8.2 Metallized or painted polymeric parts or enclosures shall comply with the applicable requirements of UL 746C. This requirement is not applicable to exterior surfaces of polymeric enclosure materials or parts provided that the metallized coating or paint does not offer a continuous path for an internal flame to propagate externally.

## 2.9 Power supplies

2.9.1 A Class 2 power supply shall comply with one of the following:

- a) UL 1310; or
- b) UL 60950-1, with an output marked "Class 2", or that complies with the limited power source (LPS) requirements and is marked "LPS"; or
- c) UL 62368-1, marked "Class 2" or the equivalent.

2.9.2 A non-Class 2 power supply shall comply with one of the following:

- a) UL 1012; or
- b) UL 60950-1; or
- c) UL 62368-1.

## 2.10 Printed wiring boards

2.10.1 Printed wiring boards, including the coatings, shall comply with UL 796.



*Exception: A printed-wiring board in a Class 2 nonsafety circuit is not required to comply with the bonding requirements in UL 796 if the board is separated from parts of other circuits such that loosening of the bond between the foil conductor and the base material will not result in the foil conductors or components coming in contact with parts of other circuits of the control or of the end-use product.*

## 2.11 Switches

2.11.1 Switches shall comply with one of the following, as applicable:

- a) UL 1054;
- b) UL 61058-1;
- c) UL 20; or
- d) UL 773A.

*Exception: Switching devices that comply with the appropriate UL standard for specialty applications (e.g. transfer switch equipment), industrial use (e.g. contactors, relays, auxiliary devices), or are integral to another component (e.g. switched lampholder) need not comply.*

2.11.2 A clock-operated switch, in which the switching contacts are actuated by a clock-work, by a gear-train, by electrically-wound spring motors, by electric clock-type motors, or by equivalent arrangements shall comply with one of the following:

- a) UL 917; or
- b) UL 60730-1 and UL 60730-2-7.

2.11.3 A timer or time switch, incorporating electronic timing circuits or switching circuits, with or without separable contacts, shall comply with the requirements for an operating control with Type 1 action for 6000 cycles of operation, or as a manual control for 5000 cycles of operation, in accordance with the following:

- a) UL 244A;
- b) UL 60730-1 and UL 60730-2-7.

2.11.4 A timer or time switch, incorporating electronic timing circuits or switching circuits, with or without separable contacts, that functions as a protective control, shall comply with the requirements for a protective control; see [2.5.1.3](#).

## 2.12 Transformers

2.12.1 General-purpose transformers shall comply with UL 5085-1; and UL 5085-2.

*Exception: A transformer that is completely enclosed within the end product enclosure, and that meets the applicable construction and performance requirements of this end product standard when tested in conjunction with the end product, meets the intent of this requirement.*

2.12.2 Class 2 and Class 3 transformers shall comply with UL 5085-1; and UL 5085-3.

*Exception: Transformers located in a low voltage circuit, and that do not involve a risk of fire or personal injury, need not comply with this requirement.*

### 3 Referenced Publications

3.1 Any undated reference to a code or standard appearing in the requirements of this Standard shall be interpreted as referring to the latest edition of that code or standard.

3.1 The following publications are referenced in this Standard:

ASME B36.10, *Welded and Seamless Wrought Steel Pipe*

ISA MC96.1, *Temperature Measurement Thermocouples*

International Mechanical Code

International Residential Code

Mobile Home Construction and Safety Standards *published by the Department of Housing and Urban Development (HUD)*

NFPA 70, *National Electrical Code*

NFPA 90B, *Installation of Warm Air Heating and Air Conditioning Systems*

NFPA 97, *Standard Glossary of Terms Relating to Chimneys, Vents, and Heat-Producing Appliances*

NFPA 2110, *Chimneys, Fireplaces, Vents, and Solid Fuel Burning Appliances*

UL 20, *General-Use Snap Switches*

UL 44, *Thermoset-Insulated Wires and Cables*

UL 62, *Flexible Cords and Cables*

UL 66, *Fixture Wire*

UL 73, *Motor-Operated Appliances*

UL 83, *Thermoplastic-Insulated Wires and Cables*

UL 103, *Factory-Built Chimneys for Residential Type and Building Heating Appliances*

UL 181, *Factory-Made Air Ducts and Air Connectors*

UL 244A, *Solid-State Controls for Appliances*

UL 248-1, *Low-Voltage Fuses – Part 1: General Requirements*

UL 248-2, *Low-Voltage Fuses – Part 2: Class C Fuses*

UL 248-5, *Low-Voltage Fuses – Part 5: Class G Fuses*

UL 310, *Electrical Quick-Connect Terminals*

UL 353, *Limit Controls*

UL 378, *Draft Equipment*

UL 486A, *Wire Connectors and Soldering Lugs for use With Copper Conductors*

UL 486B, *Wire Connectors for Use With Aluminum Conductors*

UL 486C, *Splicing Wire Connectors*

UL 486E, *Equipment Wiring Terminals for Use with Aluminum and/or Copper Conductors*

UL 489, *Molded-Case Circuit Breakers, Molded-Case Switches and Circuit-Breaker Enclosures*

UL 489A, *Circuit Breakers For Use in Communications Equipment*

UL 498, *Attachment Plugs and Receptacles*

UL 508, *Industrial Control Equipment*

UL 514A, *Metallic Outlet Boxes*

UL 514C, *Nonmetallic Outlet Boxes, Flush-Device Boxes, and Covers*

UL 514D, *Cover Plates for Flush-Mounted Wiring Devices*

UL 746B, *Polymeric Materials – Long Term Property Evaluations*

UL 746C, *Polymeric Materials – Use in Electrical Equipment Evaluations*

UL 758, *Appliance Wiring Material*

UL 773A, *Nonindustrial Photoelectric Switches for Lighting Control*

UL 796, *Printed Wiring Boards*

UL 810, *Capacitors*

UL 817, *Cord Sets and Power-Supply Cords*

UL 873, *Temperature-Indicating and -Regulating Equipment*

UL 917, *Clock-Operated Switches*

UL 943, *Ground-Fault Circuit-Interrupters*

UL 991, *Safety-Related Controls Employing Solid-State Devices*

UL 1004, *Electric Motors*

UL 1004-1, *Rotating Electrical Machines – General Requirements*

UL 1004-2, *Impedance Protected Motors*

UL 1004-3, *Thermally Protected Motors*

UL 1004-7, *Electronically Protected Motors*

UL 1012, *Power Units Other Than Class 2*

UL 1054, *Special-Use Switches*

UL 1059, *Terminal Blocks*

UL 1077, *Supplementary Protectors for Use in Electrical Equipment*

UL 1283, *Electromagnetic Interference Filters*

UL 1310, *Class 2 Power Units*

UL 1412, *Fusing Resistors and Temperature-Limited Resistors for Radio- and Television-Type Appliances*

UL 1434, *Thermistor-Type Devices*

UL 1998, *Software in Programmable Components*

UL 2111, *Overheating Protection for Motors*

UL 4248-1, *Fuseholders – Part 1: General Requirements*

UL 4248-9, *Fuseholders – Part 9: Class K*

UL 5085-1, *Low Voltage Transformers – Part 1: General Requirements*

UL 5085-2, *Low Voltage Transformers – Part 2: General Purpose Transformers*

UL 60691, *Thermal-Links – Requirements and Application Guide*

UL 60730-1A, *Automatic Electrical Controls for Household and Similar Use; Part 1: General Requirements*

UL 60730-2-2, *Automatic Electrical Controls for Household and Similar Use; Part 2 Particular Requirements for Thermal Motor Protectors*

UL 60730-2-7, *Automatic Electrical Controls; Part 2-7: Particular Requirements for Timers and Time Switches*

UL 60730-2-9, *Automatic Electrical Controls; Part 2-9: Particular Requirements for Temperature Sensing Controls*

UL 60950-1, *Information Technology Equipment, – Safety – Part 1: General Requirements*

UL 61058-1, *Switches for Appliances – Part 1: General Requirements*

UL 61800-5-1, *Adjustable Speed Electrical Power Drive Systems – Part 5-1: Safety Requirements – Electrical, Thermal and Energy*

UL 62368-1, *Audio/Video, Information and Communication Technology Equipment – Part 1: Safety Requirements*

Uniform Mechanical Code

## 4 Units of Measurement

4.1 Values stated without parentheses are the requirement. Values in parentheses are explanatory or approximate information.

## 5 Terminology

5.1 The term "product" as used in these requirements refers to all fireplace stoves or any part thereof covered by these requirements unless specifically noted otherwise.

## 6 Glossary

6.1 For the purpose of this Standard, the following definitions apply.

6.2 ALUMINUM-COATED STEEL – An aluminum-coated steel in which the bond between the steel and the aluminum is an iron-aluminum alloy.

6.3 CHIMNEY CONNECTOR – The flue pipe that connects a fuel-burning appliance to a chimney.

6.4 COMBUSTIBLE MATERIAL AND NONCOMBUSTIBLE MATERIAL – As used in this Standard, these terms are defined in NFPA 97.

6.5 DAMPER – A valve or plate that regulates draft or flow of flue gases or inlet combustion air. Shall be either manually or automatically operated.

6.6 FLOOR PROTECTOR (HEARTH EXTENSION) – The noncombustible material applied to the combustible floor area located beneath the product and extending beyond the front and sides and to the rear of the product. The area is to be of the dimensions specified in the installation instructions.

6.7 GRATE – A frame for supporting the fuel within a fireplace stove.

6.8 HEARTH – The floor area within the fire chamber of a fireplace stove.

## 7 Materials

7.1 A fireplace stove and a chimney connector, when provided, shall be made of noncombustible corrosion-resistant materials. Metals shall not be used in combinations that cause galvanic action at any location within the assembly.

7.2 The minimum thickness of metal, including any coatings, shall comply with [Table 7.1](#).

*Exception: Decorative metal parts are not required to comply with [Table 7.1](#).*

**Table 7.1**  
**Minimum Metal Thickness**

	Inch	(mm)
Aluminum-coated steel Type T1-40 [regular 0.40 oz. per square foot (0.12 kg/m <sup>2</sup> )]	0.018	(0.46)
Aluminum alloys	0.016	(0.41)
Cast iron	0.125	(3.17)
Galvanized steel (G60 coating class)	0.018	(0.45)
Porcelain-enameled steel	0.032	(0.81)
Stainless steel	0.012	(0.30)
Steel (uncoated or painted)	0.042	(0.41)

7.3 Aluminum alloys containing more than 1 % magnesium shall not be used when the reflectivity of the material is employed to reduce the risk of fire.

7.4 The fire chamber of the fireplace stove, and other parts in contact with flue gases that are visible after installation, shall be of material having the durability and resistance to fire and heat equivalent to fireclay tile, Series 300 or 400 stainless steel, aluminum-coated steel, cast iron, or 0.042 inch (1.07 mm) thick unprotected or painted steel.

7.5 Cast iron and unprotected and painted sheet steel complying with the requirements of footnotes (k) and (l) of [Table 12.1](#) comply with the requirements of [7.4](#).

7.6 Parts that are in contact with flue gases and that are not visible after installation shall be of a material having the durability and resistance to corrosion, fire, and heat equivalent to fireclay tile or Series 300 or 400 stainless steel.

7.7 Thermal insulation material shall be of metal or of a mineral base.

7.8 Thermal insulation shall comply with the following conditions when the fireplace stove is tested in accordance with these requirements:

- a) The products resulting from the combustion or volatilization of any combustible binder shall be discharged to the chimney.
- b) Insulating material shall remain in the intended position.
- c) Thermal conductivity of the insulation shall not increase.
- d) The insulation shall not show evidence of softening, melting, or deterioration.

7.9 Thermal insulation shall be protected against contact with the products of combustion.

7.10 Thermal insulation that is not self-supporting shall be applied to solid surfaces so that the insulation does not sag. An adhesive or cement used to attach such material shall retain its adhesive qualities at any temperature the adhesive attains when tested in accordance with these requirements and at 0 °F (minus 17.8 °C).

7.11 A water-absorbing insulating material shall be protected against wetting by condensation or rain when installed as intended.

7.12 The combustion air duct system (when applicable) shall be made of sheet metal not less than 0.016 inch (0.41 mm) thick. See [8.10.1](#) and [8.10.2](#).

*Exception: Thinner materials classified as Class 0 or Class 1 air ducts, as defined in NFPA 90B, and in UL 181, shall be used when:*

- a) They comply with the requirements of NFPA 90B and UL 181; and*
- b) They have been investigated for the intended application.*

7.13 Asbestos material shall not be used.

## **8 Assembly**

### **8.1 General**

8.1.1 A fireplace stove and related parts shall be constructed and assembled to have the strength, rigidity, and durability to withstand damage during tests in accordance with these requirements and during handling and installation.

8.1.2 A joint in a metal surface of a fire chamber or flue gas passageway shall be made tight by being welded, lock-seamed, riveted, or bolted. A joint shall not depend primarily on cement for tightness.

8.1.3 Each part or assembly shall be constructed for attachment of one to the other without requiring alteration, cutting, threading, drilling, welding or similar task by the installer.

*Exception: An assembly or component part intended to be cut to length or to be fitted by the installer shall be provided when means are furnished for joining any altered part to a companion part or assembly. All fasteners required to complete the assembly shall be provided with the product by the manufacturer. Drilling shall not occur unless:*

- a) The drilling operation does not weaken the assembly or drill into the fire chamber; and*
- b) The size of the required drill bit is specified and instructions clearly describe the locations to be drilled, such as by the use of templates, drawings, or descriptions.*

8.1.4 Insulating materials shall be an integral part of the assembly when required to protect combustible parts of the building when the fireplace stove is installed in accordance with the manufacturer's instructions.

*Exception: Fire chamber materials shall be packaged and shipped with the fireplace stove when:*

- a) The installation instructions provide for a description of method of placement of this material; and*
- b) The fireplace stove is marked with an adhesive-backed warning marking indicating the material is to be installed before firing.*

8.1.5 Two or more parts or subassemblies that must bear a definite relationship to each other shall be:

- a) Arranged and constructed to permit them to be incorporated into the complete assembly without requiring alteration or alignment and only in the correct relationship with each other; or
- b) Assembled and shipped from the factory as one element.

8.1.6 Parts of a fireplace stove, such as support legs, chimney, or chimney connector parts that are necessary to limit temperatures on adjacent construction shall be factory-attached, or shall comply with all of the following:

a) The parts shall be:

1) Shipped with the fireplace stove; or

2) Marked with the name or trademark of the private labeler, with a catalog number or equivalent designation, and with the type of equipment with which it is intended to be used. The associated fireplace stove shall be marked to indicate the catalog number or equivalent designation of such a part, and the name of the private labeler of that part.

b) Assembly of the parts shall comply with the requirements of [8.1.3](#).

c) The installation instructions shall define and illustrate the intended assembly of the parts.

8.1.7 The fireplace stove shall have no edges, corners, or projections presenting a risk of a cut or puncture-type injury to persons.

## 8.2 Flue damper

8.2.1 A flue gas outlet damper operated through a linkage or other mechanism shall be constructed so that breakage of a part does not result in the damper to partially or completely close.

## 8.3 Fire screen

8.3.1 A fire screen shall be furnished by the manufacturer as part of the fireplace stove.

## 8.4 Flue collar

8.4.1 A flue collar shall be made of material not thinner than that required for the fire chamber. A collar shall provide for attachment and fastening of the chimney connector by at least two screws or other equivalent mechanical methods.

8.4.2 A flue collar shall be of a nominal whole-inch (mm) size diameter of 6 inches (152 mm) or greater or the fireplace stove shall be provided with an increasing adaptor to fit to the next larger whole-inch size diameter of 6 inches or greater.

## 8.5 Radiation shield and baffle

8.5.1 A radiation shield or a baffle shall be constructed, formed, and supported to provide the intended positioning and to prevent distortion or sagging when tested in accordance with these requirements.

## 8.6 Thermostatic control

8.6.1 A thermostatically controlled air inlet damper shall be constructed so that breakage or malfunction of a part causes the combustion air inlet to close.

8.6.2 When the mechanism of the thermostat control is accessible (see [12.11](#)), the requirements of [12.10](#) shall also be applied.

8.6.3 When the mechanism of the thermostat control is not accessible, and the thermostatic control is relied upon to limit maximum temperatures, the thermostatic control shall comply with the requirements in UL 353.



## 8.7 Grate

8.7.1 A fireplace stove that is intended to burn coal only or both coal and wood shall have an integral grate constructed for burning coal.

*Exception: A detachable grate constructed for burning coal shall not be provided and shipped separately unless the assembly complies with the requirements in [8.1.6](#).*

## 8.8 Separable handle

8.8.1 A separable handle, when provided, shall not remain in position when the user's hand is withdrawn following use.

8.8.2 Storage means shall be provided on the device for separable handles so that when the handle is stored as intended, during the Radiant Fire Test, Section [13](#) and Brand Fire Test, Section [14](#), the temperatures on the separable handle do not exceed the temperature limits shown in [Table 12.1](#).

## 8.9 Barometric draft regulator

8.9.1 A barometric draft regulator used in conjunction with the flue of a fireplace stove shall comply with the requirements in UL 378. It shall be adjusted and set at the fireplace stove manufacturer's factory to the maximum draft specified on the fireplace stove and shall be shipped with the product.

## 8.10 Combustion air duct system

8.10.1 The air inlet shall permit zero clearance to combustible construction.

8.10.2 The air inlet shall prevent material from dropping into the inlet or into the area beneath the mobile home, and also prevent rodents from entering from the outside [a wire mesh having openings not larger than 1/4 by 1/4 inch (6.4 by 6.4 mm) is capable of being used for the purpose].

# PERFORMANCE

## 9 General

9.1 When a fireplace stove is tested in accordance with these requirements, temperatures on combustible construction adjoining the fireplace stove, chimney connector, and floor area shall be maintained within the limits specified.

9.2 The draft created by the product during its intended operation shall not result in the spillage of the products of combustion from the product into the area served by the device.

9.3 After being tested in accordance with the Radiant Fire Test, Section [13](#); Brand Fire Test, Section [14](#); and Flash Fire Test, Section [15](#), the product shall be capable of further intended use. After completion of these tests, the fireplace stove is to be allowed to cool to room temperature and then subjected to the Strength Tests, Section [17](#) and Stability Test, Section [18](#).

9.4 Results that verify compliance with the requirements of [9.3](#) include the following:

- a) No part has become damaged or permanently distorted to an extent that it does not continue to function as intended.

- b) Other than paint or porcelain enamel not intended to be a protective coating, the effectiveness of any required protective coating or finish on metal parts has not been impaired.
- c) A ceramic or refractory material does not show evidence of cracking, disintegration, or spalling to an extent that impairs the serviceability of the part or the assembly.
- d) Cracks are not observable in porcelain enamel used as required protective coating, see [8.1.4](#), when the surface is examined under a microscope of 60 magnification.
- e) The reflectivity of a surface has not been impaired when the reflectivity of such surface is employed to reduce the risk of fire.
- f) The effectiveness of insulating material has not been reduced.

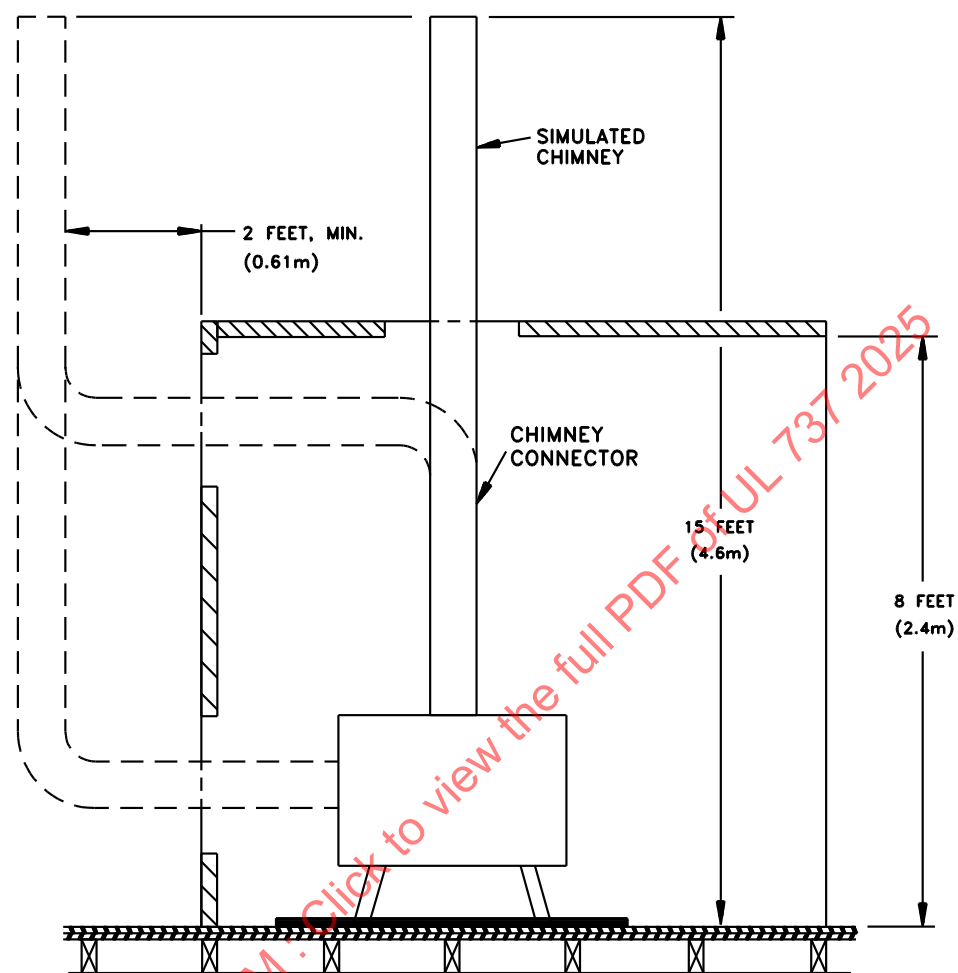
## 10 Test Installation

10.1 Tests are to be conducted as described in [10.2](#) – [10.16](#) on each type of fireplace stove. When the fireplace stove is manufactured in more than one size, tests are to be conducted on as many sizes as to determine compliance with the requirements in [10.2](#) – [10.16](#).

10.2 The fireplace stove to be tested is to be installed in a structure similar to that illustrated by [Figure 10.1](#), constructed to accommodate the product as it is to be tested.

ULNORM.COM : Click to view the full PDF of UL 737 2025

Figure 10.1  
General Form of Test Structure



S2073

10.3 The test structure is to be erected within a room having ventilation capable of maintaining the buildup of carbon monoxide to less than 50 parts per million throughout the period of any test. The room is to be free of drafts and the chimney is to exhaust into the same space, or into a space freely communicating with the space, from which the combustion air is taken. During any one test the room temperature shall not increase more than 20 °F (11 °C) above the value recorded at the beginning of the test.

10.4 The temperature of the room and entire test structure within the room shall be between 60 and 90 °F (15.6 and 32.2 °C) at the beginning of the Radiant and Brand Fire Tests, Sections [13](#) and [14](#).

10.5 Ventilating, combustion, or cooling air openings into the fireplace stove are to be sealed unless:

- a) The openings are more than 1-1/2 inches (40 mm) above the floor and are otherwise arranged to reduce unintentional closure;
- b) The openings are not blocked by the user to overcome a nuisance, such as downdrafts, a cold room, or an overheated room; and
- c) The air is drawn from the room in which the fireplace stove is installed and is discharged into the same room or into the flue-gas passageway below the damper, or the air is drawn into the fireplace stove through the chimney at the cap which is an integral part of the fireplace stove assembly and discharged into the flue-gas passageway below the damper or separate discharge passageway of the chimney.

10.6 That part of the test structure representing the living-space area in which the fireplace stove is to be installed is to consist of a back wall, one side wall, a ceiling, and a floor. See [Figure 10.1](#).

10.7 The combustible floor below the fireplace stove is to consist of two layers of 3/4 inch (19 mm) thick plywood over trade size 2- by 4-inch [nominal 1-1/2 by 3-1/2 inch (38- by 89-mm)] floor supports placed on 16 inch (405 mm) centers.

10.8 The floor under the fireplace stove is to extend at least 4 feet (1.2 m) in front of the fireplace stove opening. The enclosure side wall is to be placed perpendicular to the back wall. The floor and back wall are to join the side wall. The floor and walls are to extend at least 4 feet (1.2 m) beyond the fireplace stove.

10.9 The side, back walls, and ceiling are each to consist of one thickness of 3/4 inch (19 mm) thick plywood.

10.10 The test structure is to include a 3/4 inch (19 mm) thick plywood ceiling located 8 feet (2.4 m) above the floor and extending not less than 4 feet (1.2 m) beyond the fireplace stove. The chimney connector is to connect to the simulated chimney at the ceiling or wall. Where the chimney pierces the ceiling or wall, an opening having a diameter 8 inches (205 mm) larger than the diameter of the chimney is to be cut and the chimney centered in the opening. The ring thus formed is to be sealed with gypsum wallboard or equivalent mineral board material at least 3/8 inch (9.5 mm) thick, placed on the exterior surface of the ceiling. The joint between the chimney connector and the ring shall not have a through opening (total eccentricity) greater than 1/8 inch (3.2 mm) wide. Temperatures on the surfaces surrounding the chimney connector are to be determined at points located 2 inches (50 mm) from the outer edge of the ring.

10.11 The fireplace stove and chimney connector are to be installed in the test structure at the minimum clearances specified by the installation instructions. Legs or other support members are to be adjusted to position the fireplace stove at the minimum allowable distance above the floor.

10.12 The area to be covered by the floor protector is to be as specified in the installation instructions.

*Exception: The unit shall be tested without a floor protector at the manufacturer's request, and the installation instructions shall describe the floor protector to be used in the final installation.*

10.13 The fireplace stove is to be connected to a simulated chimney by a black or blued-steel chimney connector pipe of the same nominal diameter as the collar or adaptor provided on the fireplace stove or by the chimney connector provided as part of the fireplace stove. The thickness shall be 0.023 – 0.028 inch (0.58 – 0.71 mm). The chimney connector is to be run vertically or horizontally, or both, to the chimney at the clearances specified by the installation instructions.

10.14 The simulated chimney is to consist of black or blued-steel pipe of the same size as the chimney connector, and shall have a thickness of 0.023 – 0.028 inch (0.58 – 0.71 mm). The chimney is to originate at the point where the chimney connector exits the test structure and is to terminate 15 feet (4.6 m) above the floor of the test structure.

*Exception: In lieu of the simulated chimney, and at the option of the manufacturer, the fireplace stove is to be tested with a factory-built chimney and ceiling support specified by the manufacturer, when:*

*a) The chimney complies with UL 103; and*

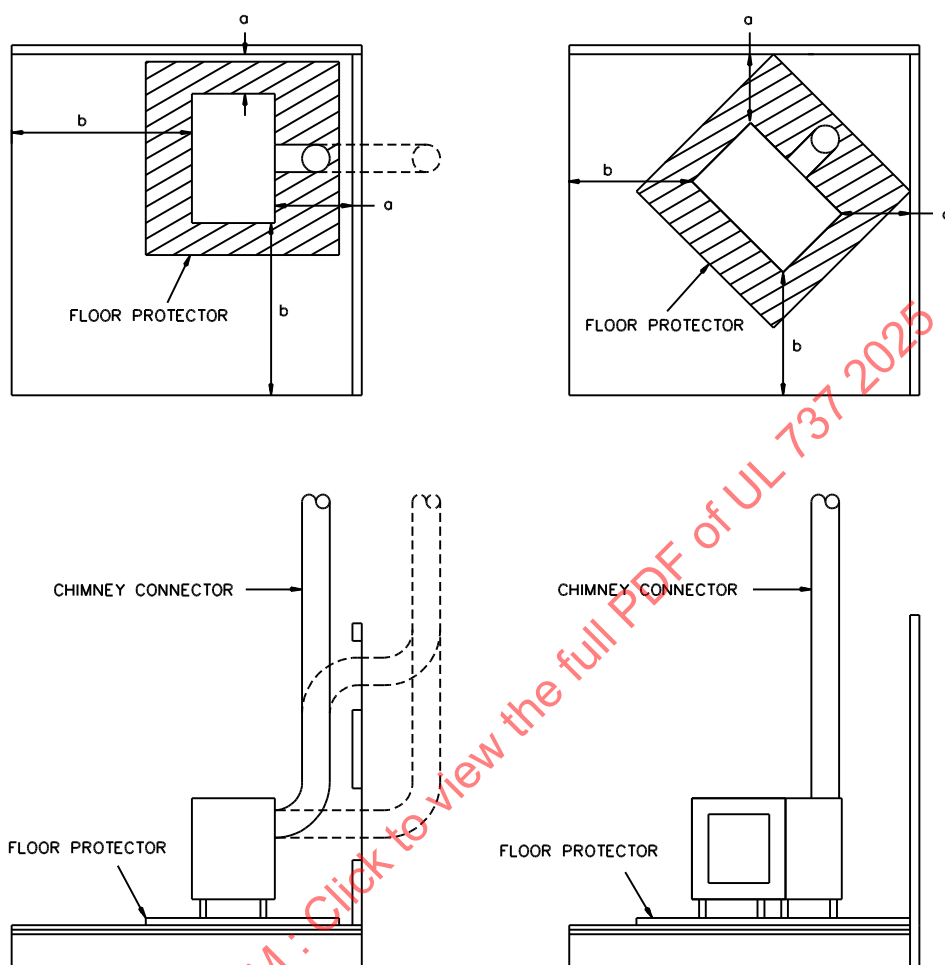
*b) Both the installation instructions and marking on the product specify the chimney with which the fireplace stove is to be used.*

10.15 The fireplace stove is to be installed and tested with the fire chamber opening parallel to the rear wall of the test enclosure or in a corner when such installation produces higher temperatures on the test structure. See [Figure 10.2](#).

10.16 All wall, floor, and ceiling surfaces of the test structure are to be painted flat black.

ULNORM.COM : Click to view the full PDF of UL 737 2025

**Figure 10.2**  
**Typical Fire Test Installations**



S2074

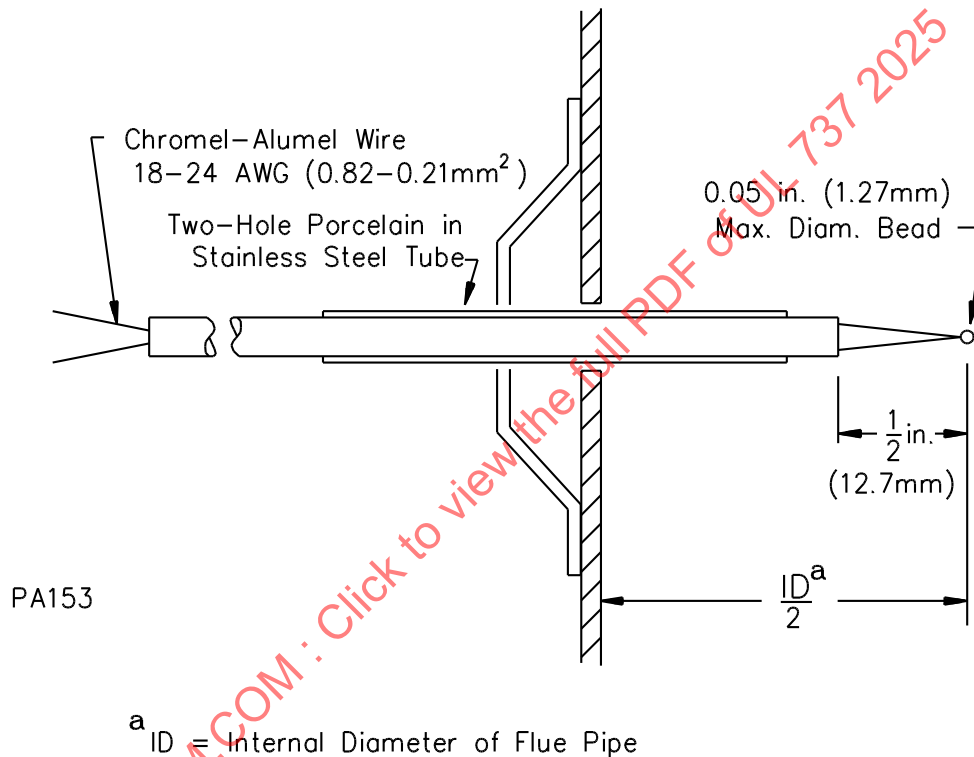
a = Minimum clearances to combustible walls, as specified in installation instructions.

b = 4 feet (1.22 m), minimum

## 11 Temperature Measurement

11.1 During all tests the inlet flue-gas temperature to the simulated chimney section is to be determined by a thermocouple, such as illustrated by [Figure 11.1](#). The thermocouple is to be a Type K (chromel-alumel) of 24 AWG (0.21 mm<sup>2</sup>) to 18 AWG (0.82 mm<sup>2</sup>) wire, and have an untwisted welded bare lead junction of not more than 0.050 inch (1.27 mm) in diameter. The thermocouple is to be positioned in the center line of the chimney connector, 6 inches (152 mm) from the simulated chimney.

**Figure 11.1**  
**Flue-Gas Thermocouple and Support Bracket**



11.2 Temperatures of other than flue gases and metal surfaces are to be measured using either Type K (chromel-alumel) or Type J (iron-constantan) thermocouples of wire not larger than 24 AWG (0.21 mm<sup>2</sup>).

11.3 Temperatures of metal surfaces other than handles and electrical components are to be measured using Type J (iron-constantan) or Type K (chromel-alumel) thermocouples of 18 AWG (0.82 mm<sup>2</sup>) to 24 AWG (0.21 mm<sup>2</sup>) wire.

11.4 The thermocouple wire insulation is to have a temperature use rating higher than the temperatures to which it shall be subjected during these tests.

11.5 The ambient temperature is to be determined by using a thermocouple that is shielded by being located centrally within a vertically oriented 6 inch (152 mm) length of aluminum-painted 2 inch (51 mm) steel pipe complying with ASME B36.10, open at both ends.

11.6 The shielded thermocouple described in [11.5](#) is to be located 6 inches (152 mm) away from the side wall, 4 feet (1.2 m) above the floor, and a distance in front of the unit that is equal to at least the minimum

clearance of the unit from the back wall (as specified by the manufacturer) and not less than 7 feet (2.1 m) from the back wall.

11.7 When a fireplace stove assembly is intended to take combustion or cooling air from the outside of a building, the ambient temperature of the space outside of the test structure, and within the test room, is to be measured by means of a shielded thermocouple located on the same horizontal plane as the opening provided for the admission of outside combustion or cooling air and 3 feet (0.9 m) from the opening. This temperature is to be maintained between 60 and 90 °F (16 and 32.2 °C) during all temperature tests.

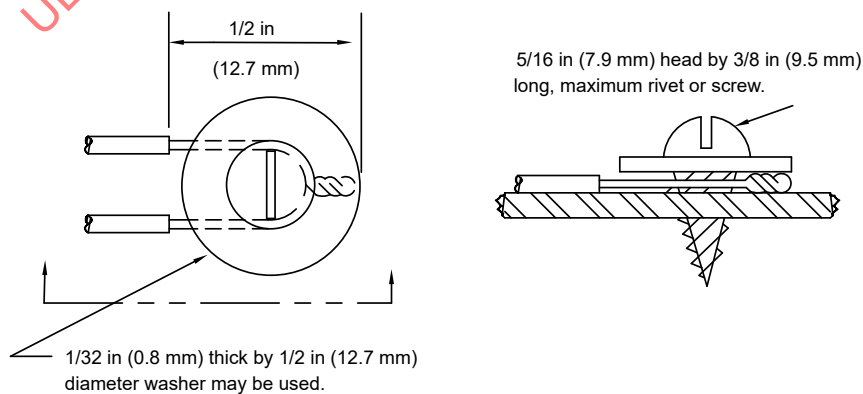
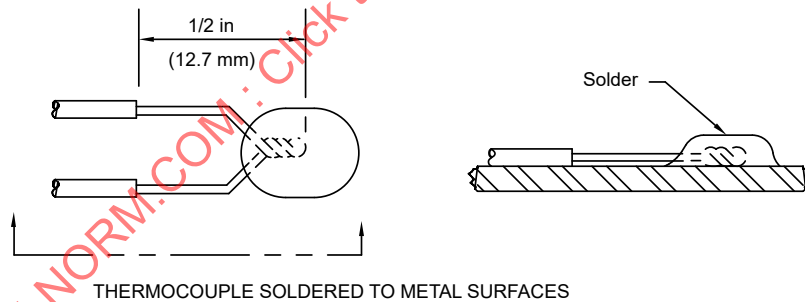
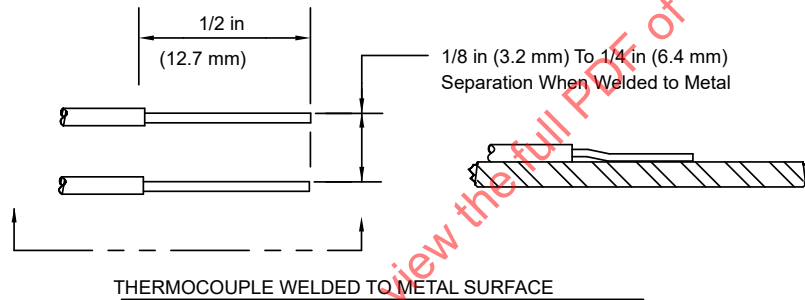
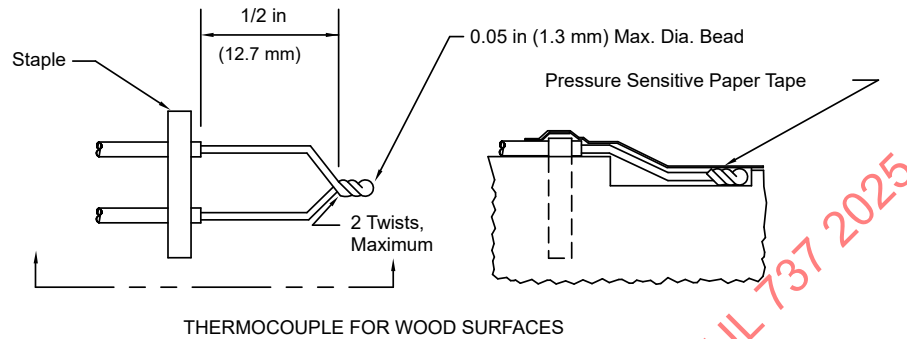
11.8 The measurement of temperature rises on the fireplace stove and chimney connector parts and on the test structure is to be referenced to the recorded ambient temperatures measured as described in [11.6](#).

11.9 Thermocouples are to be attached to metal surfaces by screws, rivets, or by silver soldering, brazing or welding of the tip to the metal surface as illustrated by [Figure 11.2](#).

ULNORM.COM : Click to view the full PDF of UL 737 2025



**Figure 11.2**  
**Thermocouple Installation Methods**



TC-100

THERMOCOUPLE SECURED TO METAL SURFACES

11.10 Thermocouples are to be secured to wood surfaces by staples placed over the insulated portion of the wires. The thermocouple tip is to be depressed into the wood so as to be flush with the wood surface at the point of measurement and held in thermal contact with the surface at that point by pressure-sensitive paper tape. See [Figure 11.2](#).

11.11 Thermocouples are to be attached to cement material surfaces by having the 1/2 inch (12.7 mm) tip and at least 1 inch (25.4 mm) of the lead wires embedded into the material so as to be flush with the surface of the material. Furnace cement is to be smoothed over such indentations to maintain thermal contact.

11.12 Thermocouples are to be attached to surfaces and electrical components other than those described in [11.9](#) – [11.11](#) by being cemented or taped to the surface in a manner to maintain thermal contact with the surface. Materials and parts whose temperatures are to be measured are included in [Table 12.1](#). Temperatures on electrical conductors are to be measured on the surfaces of the conductor insulation.

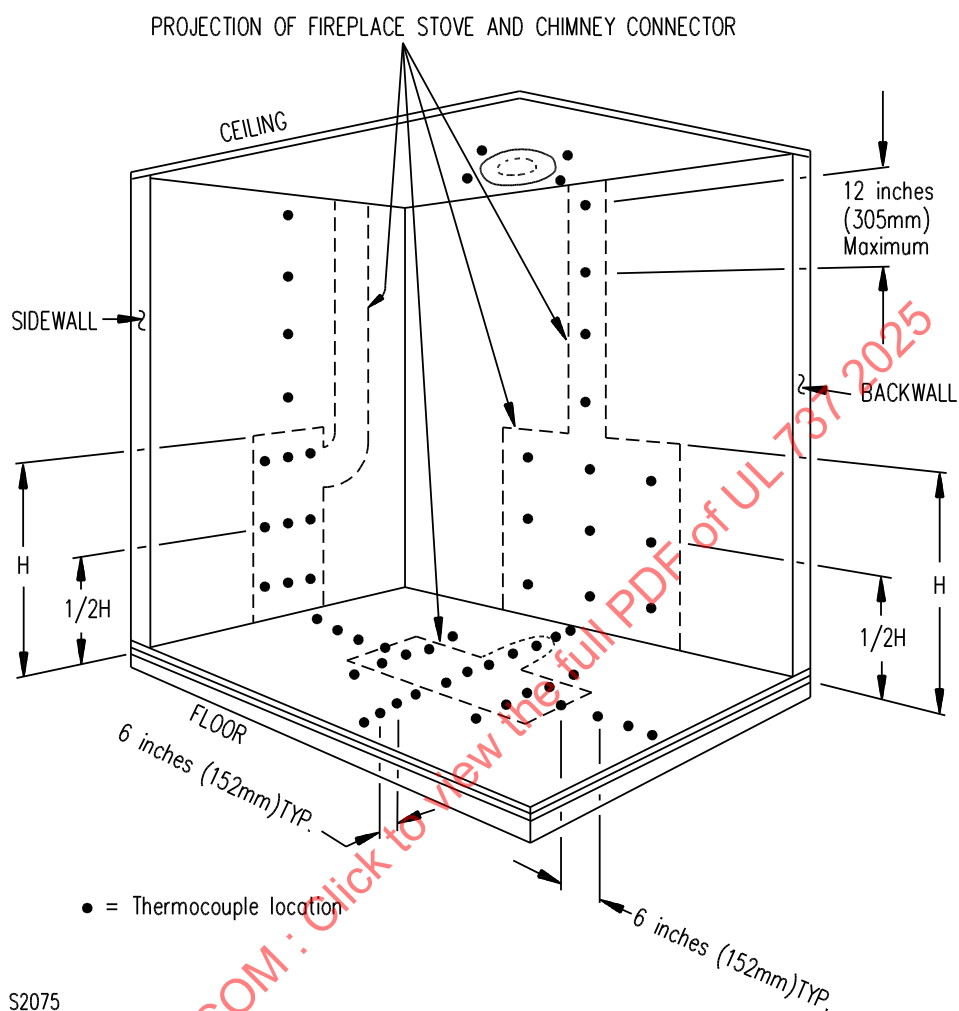
11.13 The wiring methods for thermocouple circuitry, including junctions, terminals, switches, plugs, and jacks are to be designed and constructed to provide independent continuous routing of both thermocouple leads to the recording equipment.

11.14 Thermocouples are to be placed on surfaces of the test structure at various locations as required to measure maximum temperatures during tests. A minimum number of typical thermocouple locations are shown in [Figure 11.3](#).

ULNORM.COM : Click to view the full PDF of UL 737 2025

Figure 11.3

## Typical Thermocouple Locations, Walls and Floor of Test Structure



S2075

11.15 When test enclosure elements are in contact with the fireplace stove or chimney connector parts, thermocouples are to be placed on the fireplace stove or on chimney part surfaces at representative points of contact.

*Exception: When a point or line contact of a spacer with an enclosure is not greater than 1/8 inch (3.2 mm) diameter or width, thermocouples are to be placed on the test enclosure at points 1/2 inch (12.7 mm) from the center of the point or line contact.*

11.16 Thermocouples are to be placed between the floor protector and the plywood flooring. Additional thermocouples are to be attached to the plywood flooring beyond the floor protector as shown in [Figure 11.3](#).

11.17 Thermocouples are to be attached to the fireplace stove and chimney connector at various locations as shall be required to measure maximum temperatures during the tests. A minimum number of locations includes the following:

- a) Hearth and refractory material;
- b) Firechamber – Bottom, sides, back, front, and top;
- c) Flue collar;
- d) Feed and ash doors (when provided);
- e) Outer Cabinet – Bottom, sides, back, front and top;
- f) Door and control handles or knobs; and
- g) Legs or support stands.

## 12 Fire Tests

12.1 When a fireplace stove incorporates an integral grate, the grate is to be used during the Radiant Fire Test, Brand Fire Test, and Flash Fire Test.

12.2 When a fireplace stove does not incorporate a grate, the Radiant Fire Test is to be conducted using a basket grate (see [13.1](#) – [13.4](#)) and the Brand Fire Test and Flash Fire Test are to be conducted with using andirons (see [14.1](#)).

12.3 When a fireplace stove is intended to be used with wood only, the Brand Fire Test and Flash Fire Test shall be conducted with the brands on the hearth when the unit bears the visible marking, "DO NOT USE GRATE OR ELEVATE FIRE – BUILD WOOD FIRE DIRECTLY ON HEARTH."

12.4 The surface temperature on the largest amount of material employed in a handle or knob for use on a fireplace stove door shall not exceed the temperature specified in [Table 12.1](#) during the Radiant and Brand Fire Tests.

*Exception: The temperature limitation does not apply to knobs used for adjusting combustion air inlets or damper handles that do not require adjustment during operation.*

12.5 Temperatures of the flue gases are to be recorded at regular intervals not exceeding 1 minute for the duration of the temperature tests.

12.6 When a fireplace stove is provided with an ash drawer, the stove is to be operated during the Radiant, Brand, and Flash Fire Tests with the ash door in any position, including an open position, that develops the maximum temperatures.

*Exception No. 1: The ash door shall not be closed during the tests unless the stove is provided with an interlock arrangement that closes the ash removal door when the fuel loading door is closed.*

*Exception No. 2: The ash door shall not be closed during these tests unless a marking as follows is provided on the ash door: "CAUTION" and the following or equivalent wording: "Risk of Excessive Temperatures. Keep Ash Door Closed During Firing Of The Fireplace Stove."*

12.7 During the Radiant, Brand, and Flash Fire Tests, thermostatic controls, adjustable flue-gas dampers, and air inlets are to be adjusted to produce the maximum temperatures.

12.8 During any of the tests, temperatures are to be determined with the fireplace stove screens withdrawn (open).

12.9 When a fireplace stove is equipped with doors, the same maximum temperature limits apply during operation with doors fully open or fully closed.

12.10 When the mechanism of the thermostatic control is accessible, the control is to be bypassed when bypassing produces higher temperatures.

12.11 With reference to the requirements of [12.10](#), a control is determined accessible when:

- a) Access to the control mechanism shall be gained by the use of simple hand tools, such as flat blade or Phillips head screwdrivers, hand pliers, wrenches, and similar tools; or
- b) The control shall be modified or its purpose defeated by mechanical means such as by connection of a piece of wire to bypass its operating characteristics.

12.12 Throughout the fire tests, there shall be no evidence of spillage of products of combustion or flame from the fireplace stove. Intermittent or sporadic wisps of smoke (smoking not over 15 seconds at a time) are not to be regarded as spillage.

*Exception: When the unit is fueled through an opening in the top of the unit that is intended to be open only when fuel is added, light intermittent or sporadic flickers of flame not exceeding 6 inches (152 mm) above the opening are permitted.*

**Table 12.1**  
**Maximum Temperature Rises**

Materials and components		Column 1 °C (°F)	Column 2 °C (°F)
A. Motors <sup>a,b,m</sup>	1. Class A insulation systems on coil windings of alternating-current motors 7 inches (178 mm) or less in diameter (not including universal motors):		
	a. In open motors: Thermocouple or resistance method	75 (135)	115 (207)

**Table 12.1 Continued on Next Page**

Table 12.1 Continued

Materials and components	Column 1		Column 2	
	°C	(°F)	°C	(°F)
b. In totally enclosed motors; Thermocouple or resistance method	80	(144)	115	(207)
2. Class A insulation systems on coil windings of alternating-current motors more than 7 inches (178 mm) in diameter and of direct-current and universal motors:				
a. In open motors;				
Thermocouple method	65	(117)	115	(207)
Resistance method	75	(135)	115	(207)
b. In totally enclosed motors;				
Thermocouple method	70	(126)	115	(207)
Resistance method	80	(144)	115	(207)
3. Class B insulation systems on coil windings of alternating-current motors 7 inches (178 mm) or less in diameter (not including universal motors):				
a. In open motors;				
Thermocouple or resistance method	95	(171)	140	(252)
b. In totally enclosed motors;				
Thermocouple or resistance method	100	(180)	140	(252)
4. Class B insulation systems on coil windings of alternating-current motors more than 7 inches (178 mm) in diameter and of direct-current and universal motors:				
a. In open motors;				
Thermocouple method	85	(153)	140	(252)
Resistance method	95	(171)	140	(252)
b. In totally enclosed motors;				
Thermocouple method	90	(162)	140	(252)
Resistance method	100	(180)	140	(252)
B. COMPONENTS <sup>m</sup>				
1. Capacitors:				
a. Electrolytic types <sup>c</sup>	40	(72)	Not specified	
b. Other types <sup>d</sup>	65	(117)		
2. Relay, solenoid, and other coils with:				
a. Class 105 insulation systems;				
Thermocouple method	65	(117)	115	(207)
Resistance method	85	(153)	115	(207)
b. Class 130 insulation system;				
Thermocouple method	85	(153)	140	(252)
Resistance method	105	(189)	140	(252)
3. Transformer enclosure: <sup>b</sup>				
a. Class 2 transformers	60	(108)	85	(153)
b. Power and ignition transformers	65	(117)	90	(162)

Table 12.1 Continued on Next Page

Table 12.1 Continued

Materials and components	Column 1		Column 2	
	°C	(°F)	°C	(°F)
C. INSULATED CONDUCTORS <sup>e,f,m</sup>				
1. Appliance wiring material				
75 °C rating	50	(90)	65	(117)
80 °C rating	55	(99)	70	(126)
90 °C rating	65	(117)	80	(144)
105 °C rating	80	(144)	95	(171)
200 °C rating	175	(315)	200	(360)
250 °C rating	225	(405)	250	(450)
2. Flexible cord – Types SO, ST, SJO, SJT, HSJ, HSJO				
60 °C rating	35	(63)	60	(108)
75 °C rating	50	(90)	65	(117)
90 °C rating	65	(117)	80	(144)
105 °C rating	80	(144)	95	(171)
3. Other types of insulated wires	See note e			
D. ELECTRICAL INSULATION – GENERAL <sup>f,m</sup>				
1. Class C electrical insulation material	Not specified			
2. Class (180) electrical insulation material	As determined by test			
3. Fiber used as electrical insulation or cord bushings	65	(117)	90	(162)
4. Phenolic composition used as electrical insulation or as parts where malfunction will result in a risk of fire or electric shock	125	(225)	150	(270)
5. Thermoplastic material	25 °C or 77 °F less than its temperature rating			
6. Varnished cloth insulation	60	(108)	85	(153)
E. METALS <sup>g</sup>				
1. Aluminum alloys –				
a. 1100 (2S)	183	(330)	239	(430)
b. 3003 (3S)	239	(430)	294	(530)
c. 2014, 2017, 2024, 5052 <sup>h</sup>	294	(530)	350	(630)
2. Aluminum-coated steel, heat-resistant type <sup>i</sup>	572	(1030)	708	(1275)
3. Carbon steel – Coated with Type A19 ceramic	572	(1030)	628	(1130)
4. Galvanized steel <sup>j</sup>	267	(480)	350	(630)
5. Low-carbon steel, cast iron <sup>k,l</sup>	461	(830)	517	(930)
6. Stainless steel –				
a. Types 302, 303, 304, 321, 347	686	(1235)	767	(1380)
b. Type 316	667	(1200)	748	(1345)
c. Type 309S	867	(1560)	950	(1705)
d. Types 310, 310B	894	(1610)	975	(1755)
e. Type 430	728	(1310)	808	(1455)
f. Type 446	961	(1730)	1042	(1875)
F. GENERAL				

Table 12.1 Continued on Next Page

Table 12.1 Continued

Materials and components	Column 1		Column 2	
	°C	(°F)	°C	(°F)
1. Operating knobs, handles, and levers <sup>o</sup>				
a. Metallic	50	(122)	Not specified	
b. Glass	78	(172)		
c. Plastic <sup>n</sup>	85	(185)		
d. Wood	150	(302)		
NOTE: Users are reminded that, throughout this Standard, conversions between Celsius and Fahrenheit temperatures for:				
a) Fixed temperature values include a 32 °C offset;				
b) Temperature rises, or differences, do not include a 32 °C offset.				
<sup>a</sup> The motor diameter is to be measured in the plane of the laminations of the circle circumscribing the stator frame, excluding lugs, boxes, and the like, used solely for motor cooling, mounting, assembly, or connection.				
<sup>b</sup> Ordinarily, coil or winding temperatures are to be measured by thermocouples unless the coil is inaccessible for mounting of these devices (for example, a coil immersed in sealing compound) or unless the coil wrap includes thermal insulation or more than 2 layers, 1/32 inch (0.8 mm) maximum, of cotton, paper, rayon, or the like. For a thermocouple-measured temperature of a coil of an alternating-current motor, having a diameter 7 inches (178 mm) or less, the thermocouple is to be mounted on the integrally applied insulation on the conductor. At a point on the surface of a coil where the temperature is affected by an external source of heat, the temperature rise measured by a thermocouple may exceed the indicated maximum by the amount noted below, provided that the temperature rise of the coil, as measured by the resistance method, is not more than that specified in the table.				
1. 5 °C (9 °F) for Class A insulation on coil windings of alternating-current motors having a diameter of 7 inches (178 mm) or less, open type.				
2. 10 °C (18 °F) for Class B insulation on coil windings of alternating-current motors having a diameter of 7 inches (178 mm) or less, open type.				
3. 15 °C (27 °F) for Class A insulation on coil windings of alternating-current motors having a diameter of more than 7 inches (178 mm), open type.				
4. 20 °C (36 °F) for Class B insulation on coil windings of alternating-current motors having a diameter of more than 7 inches (178 mm), open type.				
<sup>c</sup> For an electrolytic capacitor which is physically integral with or attached to a motor, the temperature rise on insulating material integral with the capacitor enclosure may be not more than 65 °C (117 °F).				
<sup>d</sup> A capacitor which operates at a temperature higher than a 65 °C (117 °F) rise may be judged on the basis of its marked temperature rating.				
<sup>e</sup> For standard insulated conductors other than those mentioned, reference should be made to the National Electrical Code; the maximum allowable temperature rise in any case is 25 °C or 77 °F less than the temperature rating of the insulation in question where Column 1 temperature rises are specified, and the maximum allowable temperature rise where Column 2 rises are specified is to be based on the heat-resistant properties of the insulation. Column 2 temperature rises are 15 °C (27 °F) above Column 1.				
<sup>f</sup> The limitations on phenolic composition and on rubber and thermoplastic insulation do not apply to compounds which have been investigated and found to have special heat-resistant properties.				
<sup>g</sup> The specified maximum temperature rises apply to parts whose malfunction may cause the product to be unacceptable for use.				
<sup>h</sup> These and other alloys containing more than 1 % magnesium shall not be used when the reflectivity of the material is employed to reduce the risk of fire.				
<sup>i</sup> When the reflectivity of aluminum coated steel is employed to reduce the risk of fire, the maximum allowable temperature rise is 830 °F (461 °C).				
<sup>j</sup> The specified maximum temperature rises shall apply when the galvanizing is required as a protective coating or the reflectivity of the surface is employed to reduce the risk of fire.				
<sup>k</sup> The specified maximum temperature rises shall not apply to parts of 0.152 inch (3.86 mm) or heavier steel and 3/16 inch (4.8 mm) thick or heavier cast iron employed for the hearth and to other parts of 0.093 (2.36 mm) thick or heavier steel, and 1/8 inch (3.2 mm) thick or heavier cast iron when:				
1. The part is not the only enclosure, and				
2. Malfunction of the part will not expose adjacent combustible construction to the fire in the fire chamber.				

Table 12.1 Continued on Next Page



Table 12.1 Continued

Materials and components	Column 1		Column 2	
	°C	(°F)	°C	(°F)
<sup>l</sup> The specified maximum temperature rise shall not apply to parts of 1/4 inch (6.4 mm) or heavier steel and 5/16 inch (7.9 mm) thick or heavier cast iron. <sup>m</sup> Maximum temperature rises are based on an ambient temperature of 25 °C or 77 °F. <sup>n</sup> Includes plastic with a metal plating not more than 0.005 inch (0.13 mm) thick; and metal with a plastic or vinyl covering not less than 0.005 inch (0.13 mm) thick. <sup>o</sup> Temperatures are maximum temperatures, based on an ambient temperature of 70 °F or 21 °C.				

12.13 With reference to [12.12](#), spillage of flame is to be observed as follows:

- a) Any time a door is opened for fueling the unit for the Brand Fire Test and Flash Fire Test; and
- b) When the maximum temperatures have been attained during the Brand Fire Test, the air inlets are to be adjusted to that point of their operating range to create maximum flame spillage.

A feed door, when provided, is then to be opened at a moderate rate 2 minutes after fuel is added and similarly reopened at every subsequent fuel loading until it is evident that there is no spillage of flame from the unit. Units with top loading doors are to be evaluated for smoke and flame spillage from the top opening with the appliance operating with the front door open and screen in place as well as with the front door closed. Manufacturer's instructions regarding operation of a damper or by-pass mechanism when adding fuel for are to be followed. Instructions regarding operation of a damper or by-pass shall be included in the operating instructions provided with the appliance.

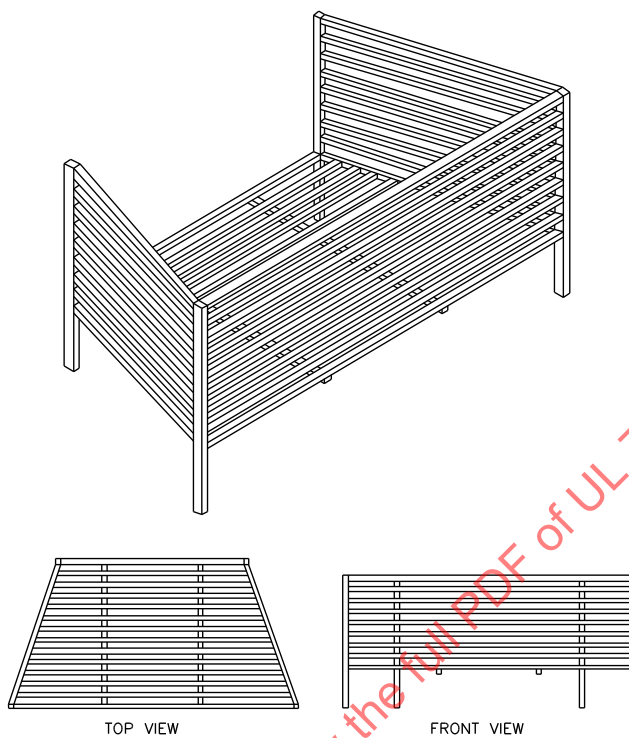
12.14 After being tested in accordance with these requirements, the assembly shall be capable of further use, as evidenced by the following:

- a) No part shall become damaged or permanently distorted to the extent that the part does not continue to function as intended.
- b) The effectiveness of any required protective coating or finish on metal parts shall not be reduced.
- c) A ceramic material shall not show evidence of cracking, disintegration, or spalling to the extent that the serviceability of the part or assembly is impaired.
- d) Cracks shall not be observable in porcelain enamel used as a required protective coating when the porcelain surface is examined under a microscope of 60 magnification.
- e) The reflectivity of a surface shall not be impaired when the reflectivity of such surface is employed to reduce the risk of fire.
- f) The effectiveness of insulating material shall not be reduced.

### 13 Radiant Fire Test

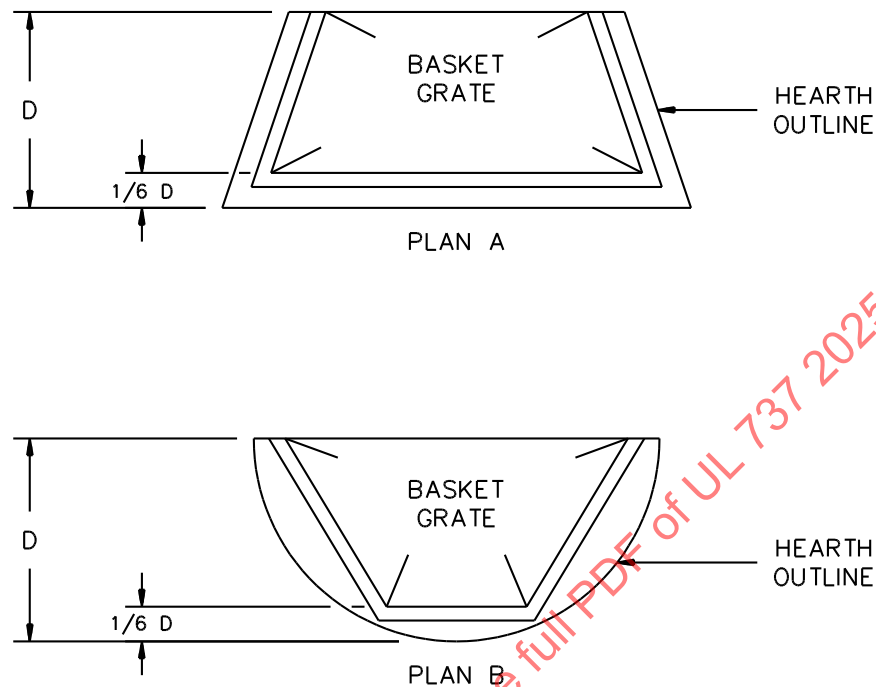
13.1 When an integral grate is not provided, a basket grate is to be constructed of 3/8 inch (9.5 mm) square steel bar stock spaced 1 inch (25.4 mm) apart on centers as illustrated in [Figure 13.1](#). The grate is to be open at the back for placement within the fire chamber as illustrated in [Figure 13.2](#).

**Figure 13.1**  
**General Form of Charcoal Basket Grate**



S 2416

**Figure 13.2**  
**Typical Relation of Grate to Hearth**



S2417

13.2 The basket grate is to have an inside surface area in the plan view equal to two-thirds of the total hearth area. In the plan view, the shape of the basket grate is to conform closely to the shape of the hearth, as shown in [Figure 13.2](#). The dimensions are to be such that when placed in position the front inside edge of the basket grate shall be located back from the front edge of the hearth at a distance equal to one-sixth of the maximum hearth depth. The inside depth of the basket grate is to be 6 inches (150 mm) and the basket grate is to stand on legs that support the inside bottom of the basket grate 4 inches (100 mm) above the hearth.

13.3 With reference to [13.2](#), when the configuration or size of the fireplace stove so require, the height of both the legs and fuel-containing portion of the basket grate are to be reduced in equal proportions as required to obstruct no more than 75 % of the height of the door opening.

13.4 When the grate is an integral part of the fireplace stove or when the fire is intended to be built directly on the fireplace stove hearth, the entire area of the grate or hearth is to be loaded to the fuel depth prescribed for the Radiant Fire Test. For purposes of the Radiant Fire Test, a separate front retaining grate constructed of 3/8 inch (10 mm) square steel bar stock spaced 1 inch (25 mm) apart on centers shall be constructed to maintain the 6 inch (152 mm) fuel depth.

13.5 The integral type or basket type grate is to be loaded to a depth of 6 inches (150 mm) with charcoal briquettes<sup>a</sup> formed in the shape of a 2.0- by 1.9-inch (50- by 48-mm) square pillow having rounded edges and a maximum thickness of 1.2 inches (30 mm). The briquettes shall have a count weight of 17 per pound (38/kg), a heat content (dry basis) of 11,500 Btu per pound (26,750 J/kg), and a moisture content of 5 %.

<sup>a</sup> A briquette capable of being used for this test is manufactured by the Kingsford Company, Pleasanton, CA 94566.

13.6 After ignition, fuel is to be added at 7-1/2 minute intervals and at each interval the fire is to be poked or stirred prior to the addition of fuel in an effort to maintain a 6 inch (150 mm) bed of fuel burning at maximum intensity. Poking and stirring are to be accomplished by inserting a flat bar of steel at the midpoint of the grate at one end and sliding it through the fire bed, and then inserting the bar at the bottom of the grate at the other end and sliding in the opposite way through the fire bed. Ashes in the ash pan or on the hearth are to be removed after each addition of fuel.

13.7 Temperatures at all points of measurement are to be recorded at intervals not exceeding 30 minutes until it is apparent the maximum temperatures have been attained. Maximum temperatures are attained when three successive readings taken at 30-minute intervals show no change or show a decrease.

13.8 When the fireplace stove is fired as described in [13.5](#) – [13.7](#) the maximum temperature rise above ambient temperature shall not exceed:

- a) 117 °F (65 °C) on exposed surfaces of the test structure; and
- b) 90 °F (50 °C) on unexposed surfaces of the test structure, such as beneath the fireplace stove, beneath the floor protector, or behind the wall-mounted shield.

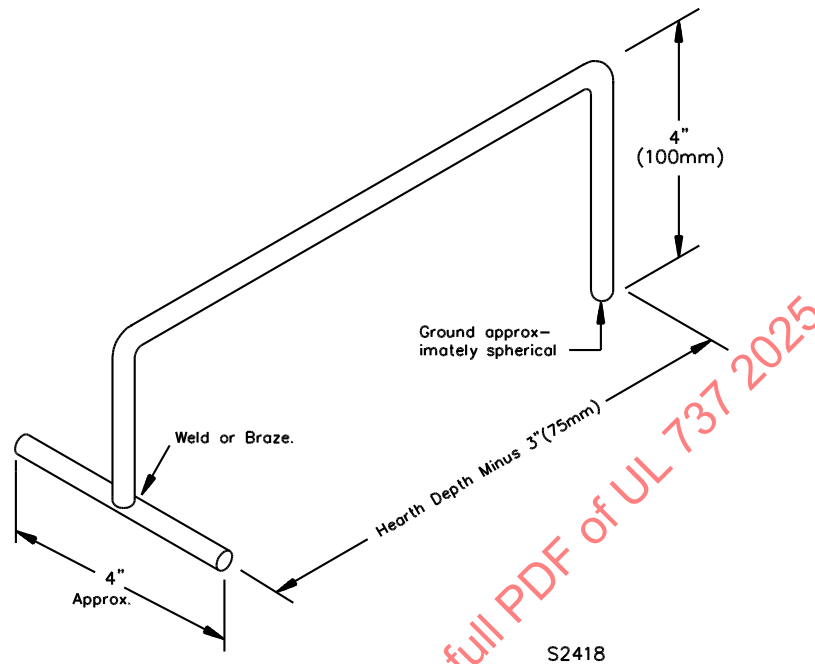
13.9 The temperature rise of any part of the fireplace stove and of a chimney connector provided as part of the fireplace stove shall not exceed the maximum values specified in [Table 12.1](#), Column 1, for the material employed.

13.10 The temperature of the flue gases entering the chimney shall not exceed 1000 °F (538 °C) except that the temperature of the flue gases shall not exceed 1000 °F (538 °C) unless it does not exceed 1400 °F (760 °C) for a cumulative period not exceeding 12-1/2 % of the test duration.

## 14 Brand Fire Test

14.1 Andirons to be used in this test are to be constructed as illustrated in [Figure 14.1](#).

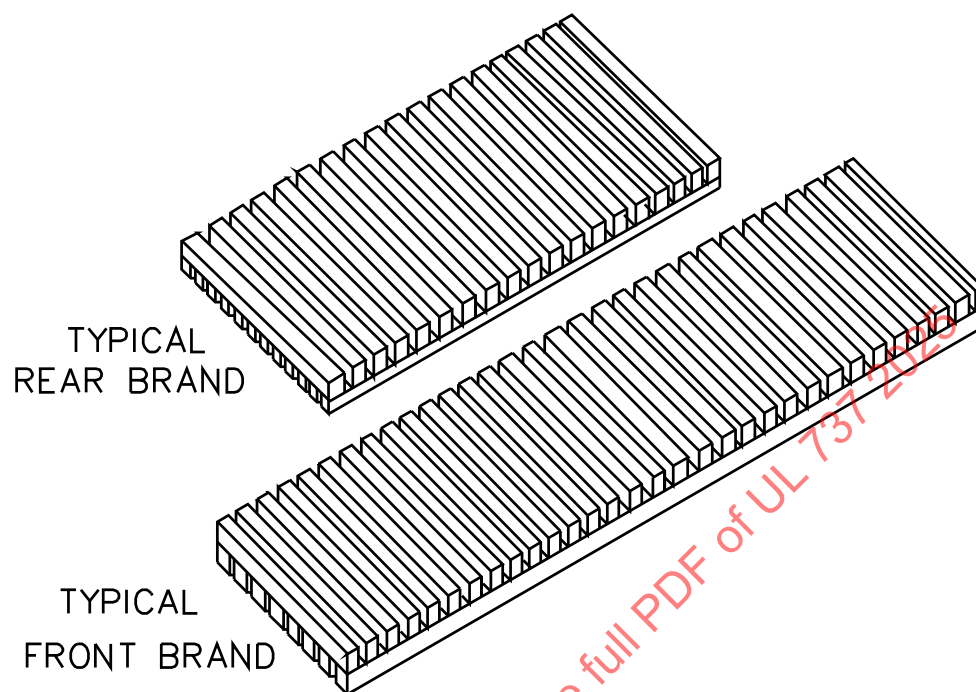
**Figure 14.1**  
**Andiron**



Material: 5/8 inch (15.9 mm) round or square steel bar stock. Two each required.

14.2 Front and rear firebrands are to be constructed as illustrated in [Figure 14.2](#), and are to employ strips of dry (moisture content of 19 % or less) Douglas fir finished to 3/4 by 3/4 inch (19.1 by 19.1 mm), weighing  $0.020 \pm 0.002$  lb/inch<sup>3</sup> ( $554.0 \pm 55.4$  kg/mm<sup>3</sup>) and spaced 1 inch (25.4 mm) apart on centers. The brands are to be conditioned in an oven at 105 – 150 °F (40.5 – 66 °C) for at least 16 hours prior to being burned. Conditioned brands are to be used within 3 hours after their removal from the oven.

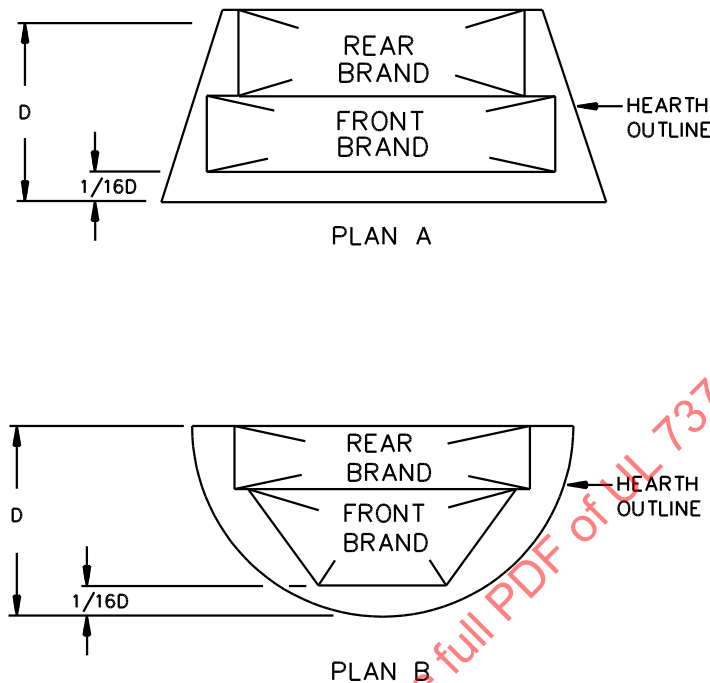
**Figure 14.2**  
**Brands**



S2419

14.3 The brands are to be placed in the fire chamber area as illustrated in [Figure 14.3](#) which shows two typical hearth shapes. Each front and rear brand is to have an area in the plan view equal to one-third of the total hearth area. When the brands are located as illustrated in [Figure 14.3](#), the distance from the front edge of the front brand to the front of the hearth is to be one-sixth of the maximum hearth depth measured between the front and back edges of the hearth.

**Figure 14.3**  
**Typical Relation of Brands to Hearth**



S2420

14.4 Fireplace stoves having fire chambers or fire chamber openings of unconventional design, that is, conical, parabolic, round, and similar designs, are to use firebrands and andirons that comply with the intent of [14.1](#) – [14.3](#).

14.5 Any damper is to be adjusted to its maximum open position.

14.6 After ignition, one brand is to be added every 7-1/2 minutes, alternating front and rear, with the long strips placed downward and parallel to the face of the fire chamber opening. Embers are to be leveled, and ashes are not to be removed from the hearth. When an ash pan is provided, ashes are to be removed from the ash pan at 15 minute intervals.

*Exception No. 1: A slower feed rate is to be used when greater temperature rises are produced.*

*Exception No. 2: When embers build up to a level of one-half of the fire chamber opening height, a slower feed rate is to be used to maintain a fuel bed that does not exceed this height.*

14.7 Temperatures at all points of measurement are to be recorded at intervals not exceeding 30 minutes until it is apparent that maximum temperatures have been attained. Maximum temperatures are attained when three successive readings taken at 30-minute intervals show no change or show a decrease.

14.8 When the fireplace stove is fired as described in [14.1](#) – [14.6](#), the maximum temperature rise above ambient temperature shall not exceed:

- a) 117 °F (65 °C) on exposed surfaces of the test structure; and

b) 90 °F (50 °C) on unexposed surfaces of the test structure, such as beneath the fireplace stove, beneath the floor protector, or behind the wall-mounted shield.

14.9 The temperature rise of any part of the fireplace stove and of a chimney connector provided as part of the fireplace stove shall not exceed the maximum specified in Column 1, [Table 12.1](#), for the material employed.

14.10 When the fireplace stove is fired as described in [14.1](#) – [14.6](#), any doors intended to be provided with the unit are to be adjusted in various positions to determine when smoke or hot gases spill out of the front opening. When spillage is observed, a warning shall be included in the instructions and placed on the unit to require operation only with doors fully open or fully closed. See [56.3.2\(b\)](#) and [54.4](#).

14.11 The temperature of the flue gases entering the chimney shall not exceed 1000 °F (538 °C) except that the temperature of the flue gases shall not exceed 1000 °F (538 °C) unless it does not exceed 1400 °F (760 °C) for a cumulative period not exceeding 12-1/2 % of the test duration.

## 15 Flash Fire Test

15.1 This test is to be conducted as a continuation of the Brand Fire Test, Section [14](#). The embers remaining from the Brand Fire Test are to be removed to a plane level with the top of the andirons.

15.2 Eight brands are to be stacked on the andirons, four in front and four in the rear with the long strips placed downward. Each stack of four brands are to be tied together with wire not larger than 18 AWG (0.82 mm<sup>2</sup>).

15.3 Fireplace stoves of unconventional designs are to be tested using a quantity of brands consistent with the intent of these requirements. The quantity of brands to be used is to be such that the brands do not extend into the combustion chamber above the highest point of the combustion chamber opening.

15.4 During the resultant fire, there shall be no evidence of spillage of products of combustion or flame from the fireplace stove. Intermittent or sporadic wisps of smoke (smoking not longer than 15 seconds at a time) are not to be regarded as spillage.

15.5 Temperatures at all points of measurement are to be recorded at intervals not exceeding 5 minutes until it is apparent that the maximum temperatures have been attained.

15.6 When the fireplace stove is fired as described in [15.1](#) – [15.3](#), the maximum temperature rises shall not exceed 140 °F (78 °C) above ambient temperature on the following surfaces:

- a) Test structure;
- b) Fireplace stove or chimney connector parts at points of zero clearance to the test structure; and
- c) Beneath a floor protector installed on the area specified for the floor protector.

15.7 The temperature rise of any part of the product shall not exceed the maximum value specified in Column 2, [Table 12.1](#), for the material employed.

15.8 The temperature of the flue gases entering the chimney shall not exceed 1400 °F (760 °C) except that for a cumulative period not exceeding 10 minutes during the duration of the test the temperature of the flue gases may exceed 1400 °F (760 °C) but shall not exceed 1700 °F (927 °C).



## 16 Glazing Test

### 16.1 General

16.1.1 Glazing shall not crack, break, become dislodged, or sustain a loss of strength, when the fireplace stove is subjected to the Radiant Fire Test, Section [13](#); Brand Fire Test, Section [14](#); and Flash Fire Test, Section [15](#).

16.1.2 When the glazing material is shielded from the room by a screen or wire mesh having openings less than 1/4 by 1/4 inch (6.4 by 6.4 mm) and the screen is secured to the frame, the glazing is permitted to crack or break when subjected to the Radiant Fire Test, Section [13](#); Brand Fire Test, Section [14](#); Flash Fire Test, Section [15](#); and when tested as described in [16.2](#) – [16.3](#), provided the screen is not damaged (torn, dislodged, punctured, or the like) by these tests. If the glazing cracks or breaks, the fireplace stove is to be subjected to these tests with the glazing material both in place (intact) and with one glazing panel removed.

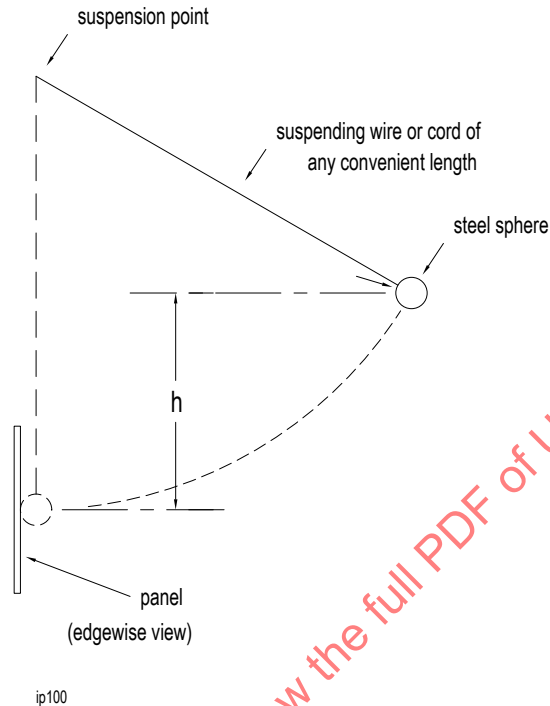
### 16.2 Impact test

16.2.1 Glazing shall withstand, without cracking or breaking, the impact described in [16.2.2](#):

- a) Prior to the Radiant Fire Test, Section [13](#) or Brand Fire Test, Section [14](#) (whichever test is conducted first), while at room temperature;
- b) During the Radiant Fire Test, while at the maximum temperature developed during that test;
- c) Following the Radiant Fire Test, after being permitted to cool to room temperature;
- d) During the Brand Fire Test, while at the maximum temperature developed during the test; or
- e) Following the Flash Fire Test, after being permitted to cool to room temperature.

16.2.2 An impact is to be applied to the center of the glazing panel by means of a 1.18 pounds-mass (0.54 kg), 2 inch (50.8 mm) diameter steel sphere swung through a pendulum arc from a height (h) of 16.25 inches (413 mm). The at-rest suspension point of the steel sphere is to be 1 inch (25.4 mm) in front of the plane of the panel. See [Figure 16.1](#).

**Figure 16.1**  
**Impact Test**



### 16.3 Water shock test

16.3.1 While at the maximum temperature developed during the Radiant Fire Test, Section [13](#), each glazing panel shall withstand, without cracking or breaking, the application of:

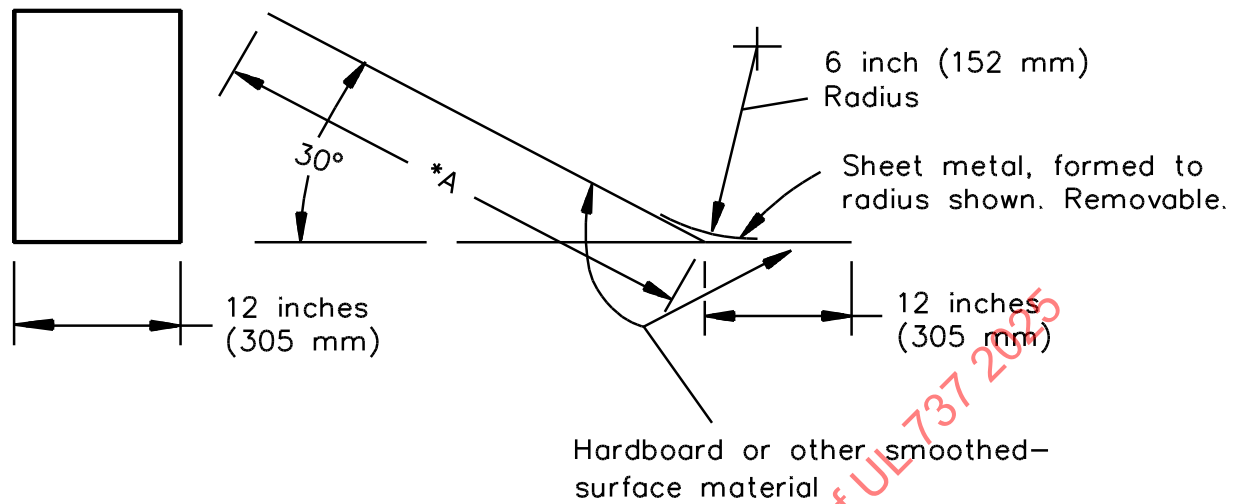
- a) A wet cloth, fully saturated with water at room temperature, wiped across the surface of each glazing panel; and
- b) Three misted water sprays, projected across the surface of each glazing panel from a household cleaning bottle with a gun-type nozzle, applied after the panel is dried and again attains the maximum temperature under the heated condition.

## 17 Strength Tests

### 17.1 Fire chamber

17.1.1 The fireplace stove, its hearth, and any factory-installed floor protector are to be positioned and supported as intended with relation to a building structure. An inclined plane and a simulated log are to be prepared for use in this test. See [Figure 17.1](#) and [Figure 17.2](#).

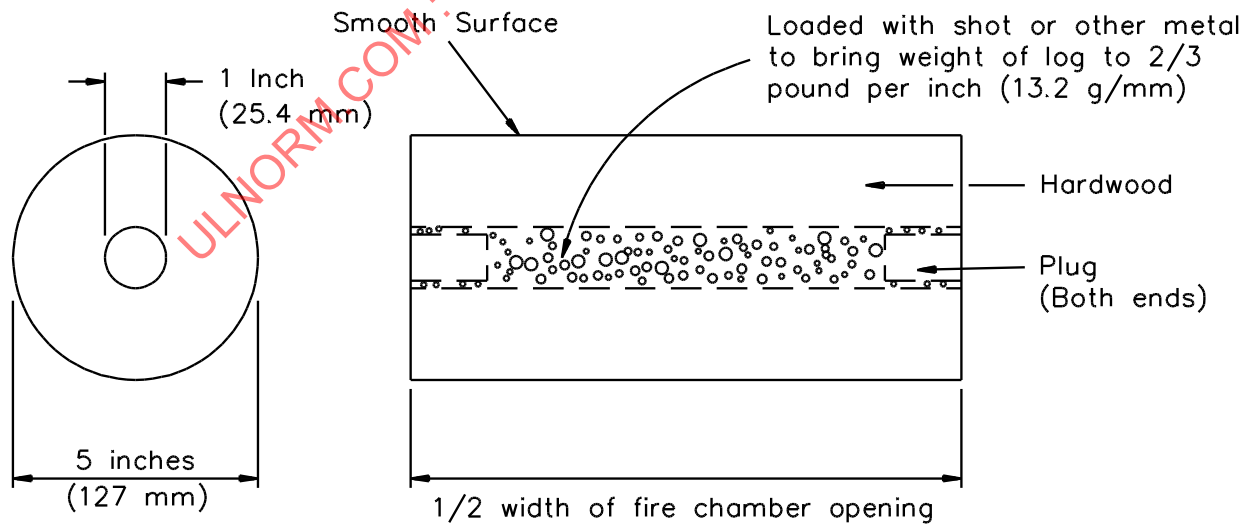
**Figure 17.1**  
**Inclined Plane for Strength Test**



\*A Approximately 1-1/2 times height of fire chamber opening support: As convenient

S2076

**Figure 17.2**  
**Simulated Log**

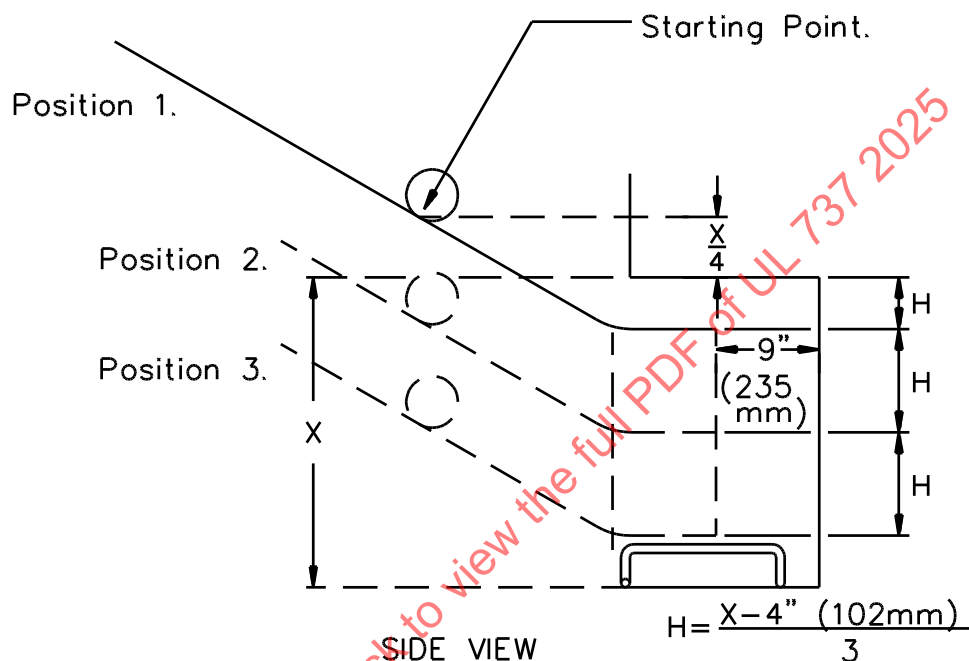


S2077

17.1.2 The inclined plane is to be positioned with respect to the fireplace stove as illustrated in [Figure 17.3](#) and [Figure 17.4](#). The andirons shown in [Figure 17.3](#) and [Figure 17.4](#) are to be as illustrated in [Figure 14.1](#).

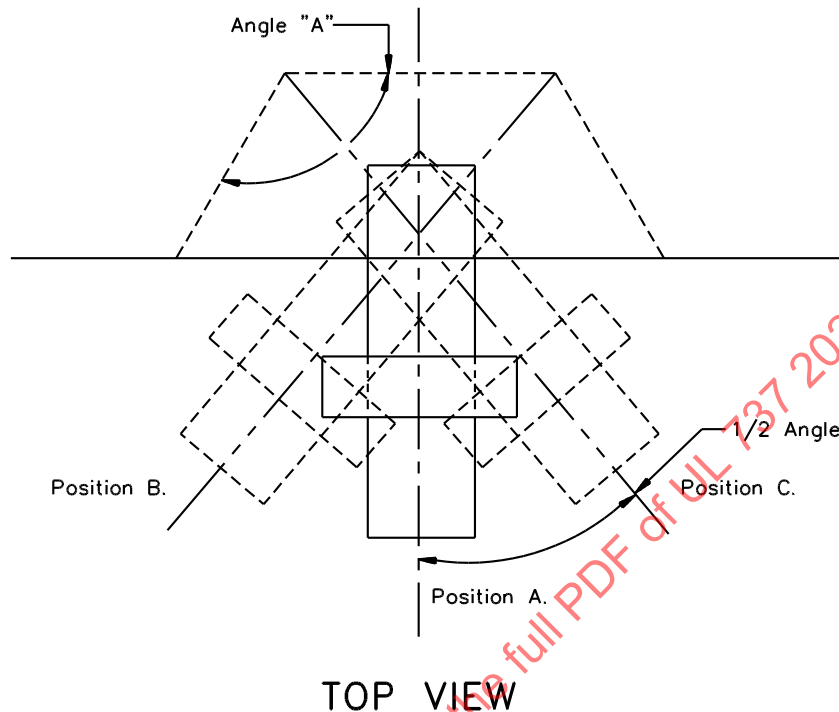
**Figure 17.3**

**Inclined Plane in Position for Strength Test of Back Wall**



S2423

**Figure 17.4**  
**Inclined Plane in Position for Strength Test of Back and Side Walls**



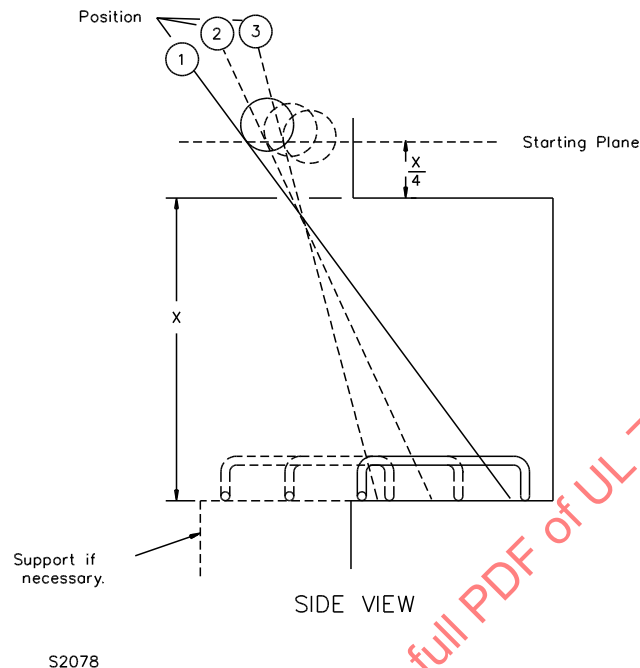
S2424

17.1.3 While remaining in position "A" as illustrated in [Figure 17.4](#), the inclined plane is to be elevated successively to each of the three positions shown in [Figure 17.3](#) and the simulated log is to be rolled down the plane once at each elevation of the plane, for a total of three impacts against the back wall of the fire chamber.

17.1.4 The test described in [17.1.3](#) is to be repeated with the inclined plane in position "B" ([Figure 17.4](#)) and then in position "C" for a total of six additional impacts.

17.1.5 With the inclined plane remaining in position "A" as illustrated in [Figure 17.4](#), the andirons are to be positioned successively in the three positions shown in [Figure 17.5](#). The slope of the inclined plane then is to be adjusted to permit the simulated log to roll down the plane and impact the rear half of the andiron. There is to be one impact at each position of the andiron, for a total of three impacts.

**Figure 17.5**  
**Inclined Plane in Position for Impact Test of Hearth**



NOTE: No single point on the hearth is to be struck repeatedly. The andirons are to be moved from side to side as well as in and out.

17.1.6 The back wall, side walls, and hearth of the fire chamber shall withstand the successive impacts on their surfaces resulting from the tests described in [17.1.3](#) – [17.1.5](#) without being damaged to the extent that the fireplace stove assembly is unacceptable for further use. Ceramic materials shall not break away, become dislodged, or show cracks opened more than 1/64 inch (0.4 mm) through the full depth of the material.

17.1.7 The hearth area within the combustion zone then is to be subjected to a uniform static load of 100 pounds per square foot (489 kg/m<sup>2</sup>) applied directly to the hearth area with the andirons removed. There shall be no permanent distortion or damage to the hearth area or to any part of the fireplace stove.

17.1.8 The area of a floor protector furnished with the assembly then is to be subjected to a static load of 400 pounds (181.6 kg) applied to various 1/4 square foot (0.02 m<sup>2</sup>) areas at different points on the floor protector. There shall be no permanent distortion or damage to the floor protector area or to any part of the fireplace stove.

17.1.9 The outside edge of a fireplace stove hearth supported from a wall structure, or otherwise unsupported directly by the floor beneath the fire chamber, then is to be subjected to a static load of 300 pounds (136.2 kg) applied through the flat surface of a trade size 2- by 4-inch nominal [1-1/2 by 3-1/2 inch (40 by 90 mm)] wood member laid perpendicular to the edge and on the center line of the fireplace stove opening. Ornamental or other trim subject to damage by this test is to be removed. There shall be no permanent distortion or damage to the hearth edge, to the fireplace stove or its support, or to the wall structure.

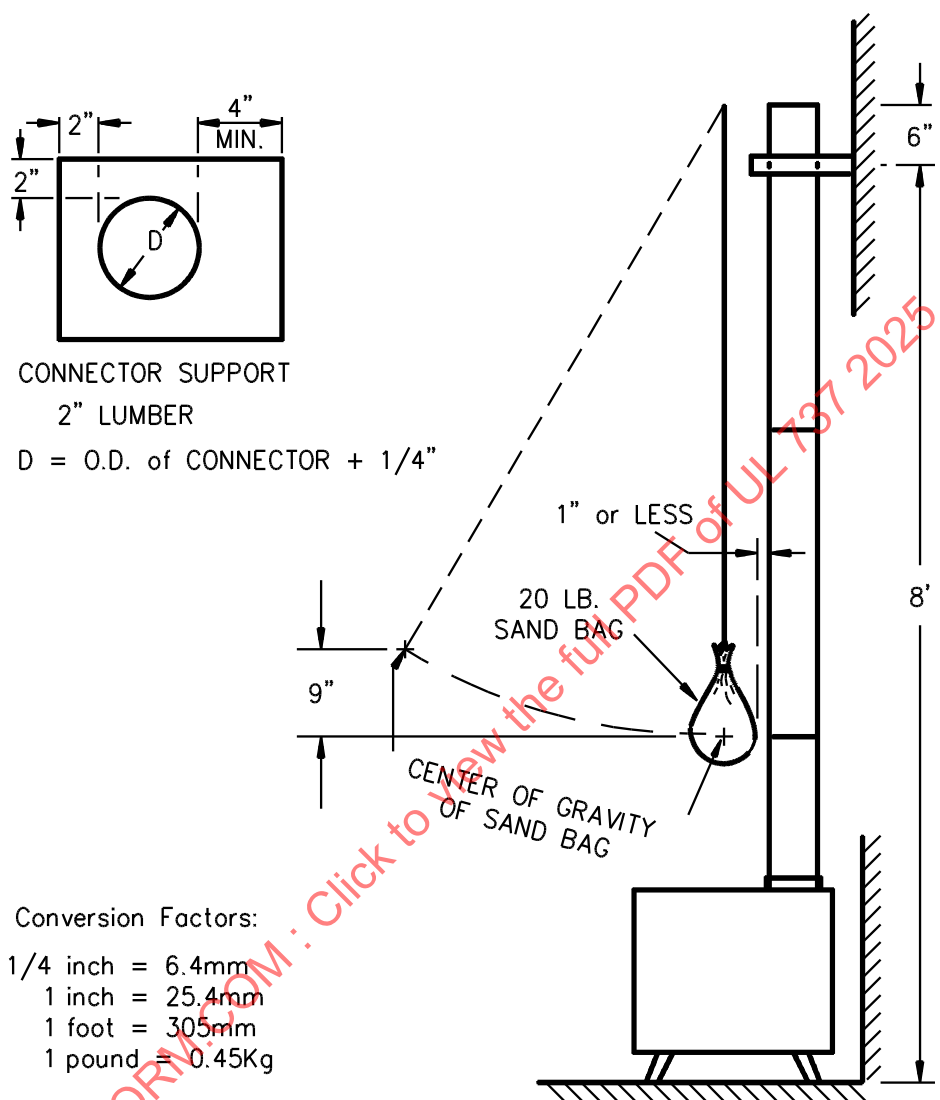
## 17.2 Chimney connector

17.2.1 When furnished as part of the assembly, a chimney connector shall not break, disassemble, or become damaged to the extent that it is unacceptable for further use as a result of three impacts of a sand bag applied as described in [17.2.3](#) – [17.2.5](#). The impact is to be applied to chimney connector sections installed as illustrated in [Figure 17.6](#). Tests are to be made on samples of each size section and arrangement intended to be joined together. When cemented joints are included in an assembly, the cement is to be allowed to dry before a test is conducted.

17.2.2 A chimney connector furnished as part of the assembly shall not break, disassemble, or become damaged to the extent that it is unacceptable for further use after being subjected to a longitudinal force of 100 pounds (445 N) applied as described in [17.2.6](#) and [17.2.7](#).

ULNORM.COM : Click to view the full PDF of UL 737 2025

**Figure 17.6**  
**Strength Test of Chimney Connector Parts**



Conversion Factors:

$1/4 \text{ inch} = 6.4\text{mm}$   
 $1 \text{ inch} = 25.4\text{mm}$   
 $1 \text{ foot} = 305\text{mm}$   
 $1 \text{ pound} = 0.45\text{Kg}$

S3322



17.2.3 With reference to the requirements in [17.2.1](#), the impact is to be produced by a pendulum consisting of a rope suspending a cloth bag filled with sand to a weight of 20 pounds (9.1 kg). The bag is to be formed by tightly drawing up all sides and corners of a flat section of canvas around the sand and tying the excess canvas. The bag is to have an at-rest position with not more than 1 inch (25.4 mm) distance between the edge of the bag and the surface of the chimney connector. The point of impact is to be on the same horizontal plane as the center of gravity of the bag. The distance of swing is to be that required to raise the center of gravity of the bag 9 inches (230 mm), measured vertically, above its at-rest position.

17.2.4 The length of the pendulum shall vary, based on the intended point of impact.

17.2.5 The three impacts are to be made successively at the following points:

- a) At the level of a joint;
- b) At the level halfway above the first joint tested and the next joint; and
- c) At the same level as in (b), and rotated around the axis of the chimney by 90° from the impact point in (b).

17.2.6 With reference to the requirements in [17.2.2](#), tests are to be made on a number of assemblies, as required to provide for representative samples of each size of part intended to be field-jointed together, including the connection to the fireplace stove. The force is to be exerted on the assembly in a direction tending to pull the assembly apart.

17.2.7 Two or more companion parts are to be joined in accordance with the manufacturer's instructions. A longitudinal force of 100 pounds (445 N) is to be applied by gripping the flue-gas conveying conduit. The force then is to be applied by gripping the outer jacket or casing.

## 18 Stability Test

18.1 When a fireplace stove is tipped in any direction, the product of the minimum force in pounds (N x 0.23) required to tip the fireplace stove and the angle in degrees through which the fireplace stove is tilted before falling of its own accord shall be 150 pounds-force degrees (667 N degrees) or more.

18.2 The fireplace stove is to be placed on a level floor or platform. When leveling means are provided, the fireplace stove is to be raised to the highest position allowed by the leveling means.

18.3 The tipping angle is to be the angle included within the plane of the base of the fireplace stove and the plane of the floor, when the fireplace stove is tipped to the least tipped position from which it falls on its side when released.

18.4 The tipping force is to be the maximum horizontal force exerted in any direction at the topmost point of any part of the unrestrained fireplace stove before any part of the base is raised from the floor.

18.5 The fireplace stove base or legs are to be blocked at the near side so that the fireplace stove does not slide in the direction of the applied force. Using a spring scale or equivalent for indicating force in pounds or newtons, the force is to be applied at the top center of each side of the fireplace stove until it starts to tip. The force required to initiate tipping is to be recorded. The tipping force is to be continued until the least tipped position is reached from which the fireplace stove tips over when not restrained. The fireplace stove is to be held in that position and the tipping angle is to be measured.

## FIREPLACE STOVES FOR USE IN MOBILE HOMES

### 19 Installation

19.1 A fireplace stove for use in mobile homes shall comply with all requirements elsewhere in this Standard unless otherwise specified in this section.

19.2 Means shall be provided for securing the fireplace stove to the floor of the mobile home.

19.3 A chimney, spark arrester, combustion air inlet, and chimney termination shall be tested with and provided as part of the fireplace stove.

19.4 A fireplace stove and its chimney shall not void the firestopping required between spaces of a mobile home when the fireplace stove, its chimney, and the combustion air inlet are installed in accordance with the manufacturer's instructions.

19.5 A fireplace stove shall be equipped with an integral door(s) or shutter(s) constructed to close off the fire chamber from the living space.

### 20 Chimney

20.1 A chimney shall comply with UL 103.

20.2 The chimney shall be attached directly to the fireplace stove and shall extend at least 3 feet (0.9 m) above the part of the roof through which it passes. The top of the chimney is to be at least 2 feet (0.6 m) above the highest required elevation of any part of the mobile home within 10 feet (3 m) of the chimney.

20.3 All roof-chimney terminations shall be able to be readily removed at or below an elevation of 13-1/2 feet (4.1 m) above ground level and reinstalled without the use of special tools or instructions. The chimney assembly shall be provided with a mechanical securement means to secure the chimney to the ceiling support box.

20.4 When the chimney exits the mobile home at a location other than through the roof, and exits at a point 7 feet (2.1 m) or less above the ground level on which the mobile home is positioned, a guard or method of enclosing the chimney shall be provided at the point of exit for a height up to 7 feet.

20.5 With reference to the requirements of [20.4](#), openings in a chimney guard shall not permit:

- a) The entrance of a 3/4 inch (19.1 mm) diameter rod; and
- b) Contact with the chimney by a 1/2 inch (12.7 mm) diameter rod inserted through the opening a distance of 4 inches (102 mm).

### 21 Spark Arrester

21.1 The chimney shall be provided with a spark arrester secured to the chimney. The net free area of the arrester above the chimney outlet shall be not less than four times the net area of the chimney outlet, and the vertical height of the arrester above the chimney outlet shall be not less than one-half the diameter of the chimney flue. Openings shall not permit the passage of a sphere having a diameter larger than 1/2 inch (12.7 mm), and shall permit the passage of a sphere having a diameter of 3/8 inch (9.6 mm).

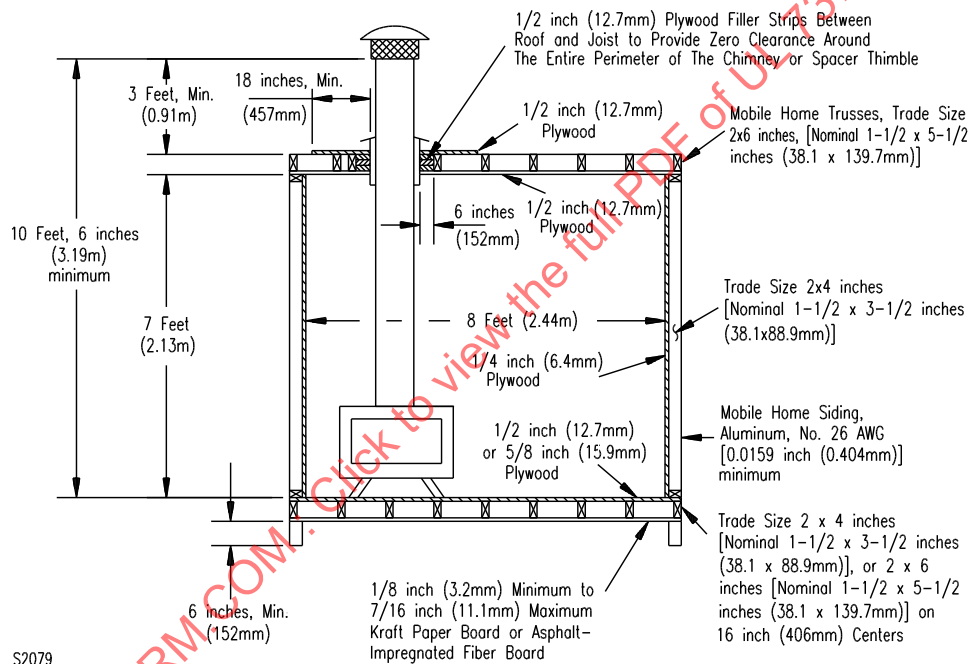
## 22 Combustion Air Inlet

22.1 The cross sectional area of the combustion air inlet shall be not less than 50 % of the cross sectional flue area. This inlet shall conduct the combustion air directly from outside the mobile home to the connection to the draft inlet of the fire chamber assembly.

## 23 Test Structure

23.1 The test structure is to consist of three walls, a floor and a ceiling and is to have inside dimensions of 7 feet (2.1 m) high by 8 feet (2.4 m) wide by 8 feet deep. Interior surfaces of the walls, ceiling and floor are to be painted flat black. See [Figure 23.1](#) for structural details.

**Figure 23.1**  
**Mobile Home Test Structure**



## 24 Test Method

24.1 The chimney of the fireplace stove shall pass through the ceiling/roof or wall of the mobile home test structure at zero clearance. This shall be accomplished by a thimble or by the inherent construction of the chimney or fireplace stove. The construction shall not void the firestopping required for a concealed space when installed in accordance with the manufacturer's installation instructions.

24.2 When the unit is equipped with an air inlet that penetrates the floor, a 3/8 inch (9.5 mm) thick plywood bottom board extending at least 8 inches (193 mm) from each side of the air inlet is to be applied to the bottom of the floor joist.

24.3 A fireplace stove intended for use in mobile homes shall comply with the requirements in Sections [11](#) – [18](#).

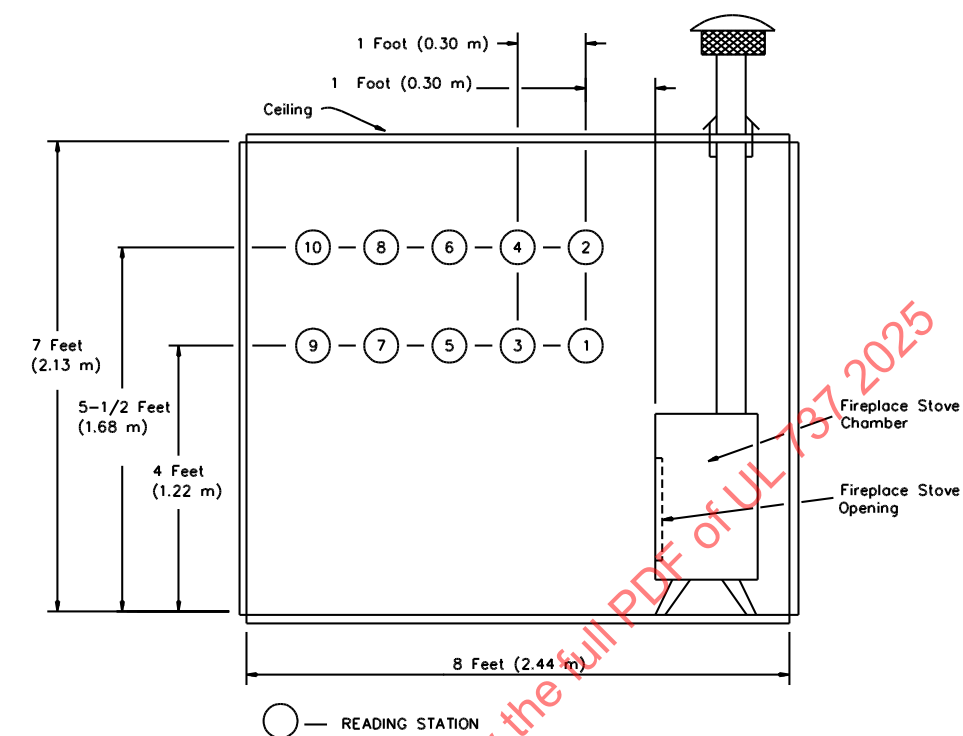
24.4 In addition to the temperature requirements specified in Radiant Fire Test, Section [13](#), and Brand Fire Test, Section [14](#), when a fireplace stove intended for use in mobile homes is tested as described in Sections [13](#) and [14](#), the maximum temperatures shall be not more than 90 °F (50 °C) above room temperature on surfaces:

- a) Of chimney parts at points of zero clearance to the test structure; and
- b) Air inlet parts at points of zero clearance to the test structure.

24.5 As a continuation of the Radiant Fire Test, Section [13](#), the test structure is to be closed and sealed on all sides. Reading stations for monitoring CO concentrations are to be located as shown in [Figure 24.1](#). The reading stations are to be located in a vertical plane perpendicular to and horizontally centered in relation to the plane of the fireplace stove opening.

24.6 The CO concentration during the test shall not exceed 50 ppm at any reading station during the entire test.

**Figure 24.1**  
**Location of Carbon Monoxide Reading Stations**



S2080

## 25 Drop Test

25.1 At the conclusion of the fire tests, see Sections 13 – 15, the fireplace stove shall withstand the successive impacts described in 25.2. Ceramic materials shall not break away, become dislodged or show cracks more than 1/64 inch (0.4 mm) wide; welds shall not break and the fireplace stove assembly shall not be damaged to the extent that it is unacceptable for further use.

25.2 The fireplace stove is to be raised 1 inch (25.4 mm) and dropped on a 3/4 inch (19.1 mm) thick sheet of plywood laid over a concrete floor. This test is to be repeated ten times.

## BLOWER ASSEMBLY

### GENERAL

#### 26 General

26.1 A fireplace stove that includes a blower assembly shall comply with the requirements of the preceding sections of this Standard and shall, in addition, comply with the requirements hereafter.

26.2 The construction and use of the blower assembly shall introduce a positive pressure into the fireplace stove.

26.3 Electrical circuits are classified as follows:

a) High-Voltage Circuit – A circuit involving a potential of not more than 250 volts and having circuit characteristics in excess of those of a low-voltage circuit.

b) Low-Voltage Circuit – A circuit involving a potential of not more than 30 volts alternating-current (42.4 peak or direct current) and supplied by a primary battery or by a standard Class 2 transformer or other transforming device, or by a combination of transformer and fixed impedance having output characteristics in compliance with what is required for a Class 2 transformer. A circuit derived from a source of supply classified as a high-voltage circuit, by connecting resistance in series with the supply circuit as a means of limiting the voltage and current, is not a low-voltage circuit.

## CONSTRUCTION

### 27 Enclosure

#### 27.1 General

27.1.1 An electrical enclosure shall be formed and assembled so that it has the strength and rigidity required to resist the abuses to which it shall be subjected in intended use without total or partial collapse and subsequent reduction of spacings, loosening or displacement of parts, or other conditions that renders it unacceptable for further use. An enclosure for individual electrical components, and outer enclosure, and combinations of the two are to be evaluated in determining compliance with this requirement.

27.1.2 Among the factors to be taken into consideration when evaluating an enclosure are:

- a) Mechanical strength;
- b) Resistance to impact;
- c) Moisture-absorptive properties;

- d) Flammability;
- e) Resistance to distortion at temperatures to which the material shall be subjected under conditions of use; and
- f) Resistance to corrosion.

For a nonmetallic enclosure or part of an enclosure all of these factors are to be evaluated with respect to aging.

27.1.3 The enclosure shall be constructed to reduce the risk of mechanical damage to wiring and electrical components.

27.1.4 The enclosure shall be constructed to reduce the risk of the emission of molten metal, burning insulation, or flaming particles through openings onto flammable material, including surfaces over which the fireplace stove or blower assembly is mounted.

27.1.5 Unless it is determined that malfunction of an electrical component does not result in a risk of fire, components, such as controls, solenoids, relays, and switches shall be individually enclosed except at terminals. See [27.1.6](#) for exception.

27.1.6 Electrical parts within the outer cabinet are not required to be individually enclosed when the assembly complies with the following:

- a) Their construction and their location with respect to openings in the outer cabinet do not result in the emission of flame or molten metal through openings in the cabinet or it is demonstrated that malfunction of the component does not result in a risk of fire;
- b) There are no openings in the bottom of the compartment in which the part is located that permits dropping of molten metal on flammable material; and
- c) The part is not in proximity to flammable material other than electrical insulation.

27.1.7 Sheet metal complying with [Table 27.1](#) or [Table 27.2](#), whichever applies, is capable of being used for the individual enclosure of electrical components.

27.1.8 When the construction and location of components and the strength and rigidity of the outer cabinet warrant, an individual enclosure thinner than specified in [Table 27.1](#) or [Table 27.2](#), whichever applies, shall be employed.

**Table 27.1**  
**Minimum Thickness of Sheet Metal for Electrical Enclosures – Carbon Steel or Stainless Steel**

Without supporting frame <sup>a</sup>		With supporting frame or equivalent reinforcing <sup>a</sup>		Minimum thickness in inches (mm)	
Maximum width <sup>b</sup>	Maximum length <sup>c</sup>	Maximum width <sup>b</sup>	Maximum length		
Inches (cm)	Inches (cm)	Inches (cm)	Inches (cm)	Uncoated (MSG)	Metal coated (GSG)
4.0 (10.2)	Not limited	6.25 (15.9)	Not limited	0.020 (0.51)	0.023 (0.58)
4.75 (12.1)	5.75 (14.6)	6.75 (17.1)	8.25 (21.0)	(24)	(24)
6.0 (15.2)	Not limited	9.5 (24.1)	Not limited	0.026 (0.66)	0.029 (0.74)
7.0 (17.8)	8.75 (22.2)	10.0 (25.4)	12.5 (31.8)	(22)	(22)

**Table 27.1 Continued on Next Page**

Table 27.1 Continued

Without supporting frame <sup>a</sup>		With supporting frame or equivalent reinforcing <sup>a</sup>		Minimum thickness in inches (mm)	
Maximum width <sup>b</sup>	Maximum length <sup>c</sup>	Maximum width <sup>b</sup>	Maximum length	Uncoated (MSG)	Metal coated (GSG)
Inches (cm)	Inches (cm)	Inches (cm)	Inches (cm)		
8.0 (20.3)	Not limited	12.0 (30.5)	Not limited	0.032 (0.81)	0.034 (0.86)
9.0 (22.9)	11.5 (29.2)	13.0 (33.0)	16.0 (40.6)	(20)	(20)
12.5 (31.8)	Not limited	19.5 (49.5)	Not limited	0.042 (1.07)	0.045 (1.14)
14.0 (35.6)	18.0 (45.7)	21.0 (53.3)	25.0 (63.5)	(18)	(18)
18.0 (45.7)	Not limited	27.0 (68.6)	Not limited	0.053 (1.35)	0.056 (1.42)
20.0 (50.8)	25.0 (63.5)	29.0 (73.7)	36.0 (91.4)	(16)	(16)
22.0 (55.9)	Not limited	33.0 (83.8)	Not limited	0.060 (1.52)	0.063 (1.60)
25.0 (63.5)	31.0 (78.7)	35.0 (88.9)	43.0 (109.2)	(15)	(15)
25.0 (63.5)	Not limited	39.0 (99.1)	Not limited	0.067 (1.70)	0.070 (1.78)
29.0 (73.7)	36.0 (91.4)	41.0 (104.1)	51.0 (129.5)	(14)	(14)
33.0 (83.8)	Not limited	51.0 (129.5)	Not limited	0.080 (2.03)	0.084 (2.13)
38.0 (96.5)	47.0 (119.4)	54.0 (137.2)	66.0 (167.6)	(13)	(13)
42.0 (106.7)	Not limited	64.0 (162.6)	Not limited	0.093 (2.36)	0.097 (2.46)
47.0 (119.4)	59.0 (149.9)	68.0 (172.7)	84.0 (213.4)	(12)	(12)
52.0 (132.1)	Not limited	80.0 (203.2)	Not limited	0.108 (2.74)	0.111 (2.82)
60.0 (152.4)	74.0 (188.0)	84.0 (213.4)	103.0 (261.6)	(11)	(11)
63.0 (160.0)	Not limited	97.0 (246.4)	Not limited	0.123 (3.12)	0.126 (3.20)
73.0 (185.4)	90.0 (228.6)	103.0 (261.6)	127.0 (322.6)	(10)	(10)

<sup>a</sup> A supporting frame is a structure of angle or channel or a folded rigid section of sheet metal which is rigidly attached to and has essentially the same outside dimensions as the enclosure surface and which has sufficient torsional rigidity to resist the bending moments which may be applied via the enclosure surface when it is deflected. Construction that is considered to have equivalent reinforcing may be accomplished by designs that will produce a structure which is as rigid as one built with a frame of angles or channels. Construction considered to be without supporting frame includes single sheet with single formed flanges (formed edges), a single sheet which is corrugated or ribbed, and an enclosure surface loosely attached to a frame, for example, with spring clips.

<sup>b</sup> The width is the smaller dimension of a rectangular sheet metal piece which is part of an enclosure. Adjacent surfaces of an enclosure may have supports in common and be made of a single sheet.

<sup>c</sup> For panels which are not supported along one side, for example, side panels of boxes, the length of the unsupported side shall be limited to the dimensions specified unless the side in question is provided with a flange at least 1/2 inch (12.7 mm) wide.

**Table 27.2**  
**Minimum Thickness of Sheet Metal for Electrical Enclosures – Aluminum, Copper, or Brass**

Without supporting frame <sup>a</sup>		With supporting frame or equivalent reinforcing <sup>a</sup>		Minimum thickness, inches (mm)
Maximum width <sup>b</sup>	Maximum length <sup>c</sup>	Maximum width <sup>b</sup>	Maximum length	
Inches (cm)	Inches (cm)	Inches (cm)	Inches (cm)	
3.0 (7.6)	Not limited	7.0 (17.8)	Not limited	0.023
3.5 (8.9)	4.0 (10.2)	8.5 (21.6)	9.5 (24.1)	(0.58)
4.0 (10.2)	Not limited	10.0 (25.4)	Not limited	0.029
5.0 (12.7)	6.0 (15.2)	10.5 (26.7)	13.5 (34.3)	(0.74)
6.0 (15.2)	Not limited	14.0 (35.6)	Not limited	0.036

Table 27.2 Continued on Next Page



Table 27.2 Continued

Without supporting frame <sup>a</sup>		With supporting frame or equivalent reinforcing <sup>a</sup>		Minimum thickness, inches (mm)
Maximum width <sup>b</sup> Inches (cm)	Maximum length <sup>c</sup> Inches (cm)	Maximum width <sup>b</sup> Inches (cm)	Maximum length Inches (cm)	
6.5 (16.5)	8.0 (20.3)	15.0 (38.1)	18.0 (45.7)	(0.91)
8.0 (20.3)	Not limited	19.0 (48.3)	Not limited	0.045
9.5 (24.1)	11.5 (29.2)	21.0 (53.3)	25.0 (63.5)	(1.14)
12.0 (30.5)	Not limited	28.0 (71.1)	Not limited	0.058
14.0 (35.6)	16.0 (40.6)	30.0 (76.2)	37.0 (94.0)	(1.47)
18.0 (45.7)	Not limited	42.0 (106.7)	Not limited	0.075
20.0 (50.8)	25.0 (63.5)	45.0 (114.3)	55.0 (139.7)	(1.91)
25.0 (63.5)	Not limited	60.0 (152.4)	Not limited	0.095
29.0 (73.7)	36.0 (91.4)	64.0 (162.6)	78.0 (198.1)	(2.41)
37.0 (94.0)	Not limited	87.0 (221.0)	Not limited	0.122
42.0 (106.7)	53.0 (134.6)	93.0 (236.2)	114.0 (289.6)	(3.10)
52.0 (132.1)	Not limited	123.0 (312.4)	Not limited	0.153
60.0 (152.4)	74.0 (188.0)	130.0 (330.2)	160.0 (406.4)	(3.89)

<sup>a</sup> A supporting frame is a structure of angle or channel or a folded rigid section of sheet metal which is rigidly attached to and has essentially the same outside dimensions as the enclosure surface and which has sufficient torsional rigidity to resist the bending moments which may be applied via the enclosure surface when it is deflected. Construction that is considered to have equivalent reinforcing may be accomplished by designs that will produce a structure which is as rigid as one built with a frame of angles or channels. Construction considered to be without supporting frame includes single sheet with single formed flanges (formed edges) a single sheet which is corrugated or ribbed, and an enclosure surface loosely attached to a frame, for example, with spring clips.

<sup>b</sup> The width is the smaller dimension of a rectangular sheet metal piece which is part of an enclosure. Adjacent surfaces of an enclosure may have supports in common and be made of a single sheet.

<sup>c</sup> For panels which are not supported along one side, for example, side panels of boxes, the length of the unsupported side shall be limited to the dimensions specified unless the side in question is provided with a flange at least 1/2 inch (12.7 mm) wide.

27.1.9 Sheet metal to which a wiring system is to be connected in the field shall have a thickness not less than 0.032 inch (0.81 mm) when uncoated steel, not less than 0.034 inch (0.86 mm) when galvanized steel, and not less than 0.045 inch (1.14 mm) when nonferrous.

27.1.10 When threads for the connection of conduit are tapped through a hole in an enclosure wall, or when an equivalent construction is employed, there shall be not less than three or more than five threads in the metal, and the construction shall permit a conduit bushing to be attached as intended. When threads for the connection of conduit are not tapped all the way through a hole in an enclosure wall, or conduit hub there shall be not less than 3-1/2 threads in the metal and there shall be a smooth, rounded inlet hole for the conductors that:

- a) Affords protection to the conductor equivalent to that provided by a standard conduit bushing; and
- b) Has an internal diameter the same as that of the corresponding trade size of rigid conduit.

27.1.11 A knockout in a sheet metal enclosure shall be secured in place, and shall be capable of being removed without deformation of the enclosure to the extent that results in damage to electrical components or reduction in electrical spacings. See [27.1.12](#).

27.1.12 A knockout or hole for connection of conduit or similar material shall be provided with a flat surrounding surface for seating of a conduit bushing and shall be located so that installation of a bushing

at any knockout or opening used during installation shall not result in reduction of spacings between uninsulated live parts and the bushing to less than those required by this Standard.

27.1.13 In measuring a spacing between an uninsulated live part and a bushing installed in a knockout, it is to be assumed that a bushing is in place, in conjunction with a single locknut installed on the outside of the enclosure.

27.1.14 A steel enclosure shall resist corrosion by the use of metallic or nonmetallic coatings, such as plating or painting.

## 27.2 Mechanical protection

27.2.1 Moving parts, such as fan blades, blower wheels, pulleys, or belts which cause injury to persons shall be enclosed or guarded so that the minor dimension of any opening does not exceed the values indicated in [27.2.3](#). Parts required for guarding shall be secured by means dependent upon tools for removal unless functioning of the fireplace stove requires the guard to be in place. Also see [54.10](#).

27.2.2 Louvers and other openings in the enclosure shall be constructed and located to reduce the risk of unintentional contact with moving parts that cause injury to persons. In determining compliance with these requirements, parts such as covers, panels or grilles used as part of the enclosure are to be removed unless tools are required for their removal.

27.2.3 The distance from an opening to the moving part shall be as indicated in [Table 27.3](#), and the minor dimension of the opening shall not, in any case, exceed 1 inch (25.4 mm). For an opening having a minor dimension intermediate between two of the values included in the table, the distance from the opening to the moving part shall be not less than that found by appropriate interpolation between the corresponding values in the right-hand column of the table. The minor dimension of the opening is to be determined by the largest hemispherically tipped cylindrical probe that is inserted through the opening with a force of 5 pounds (22.3 N).

**Table 27.3**  
**Dimensions of Openings in Enclosure**

Minor dimensions of opening <sup>a</sup>		Minimum distance from opening to moving part	
Inches	(mm)	Inches	(mm)
1/4	(6.4)	1/2	(12.7)
3/8	(9.5)	1-1/2	(38.1)
1/2	(12.7)	2-1/2	(63.5)
3/4	(19.1)	4-1/2	(114.0)
1	(25.4)	6-1/2	(165.0)

<sup>a</sup> Openings less than 1/4 inch (6.4 mm) are not to be considered.

27.2.4 A moving part is not to be evaluated when determining compliance with [27.2.1](#) when:

- The part shall not be contacted through the opening because of the location of fixed components, including baffles;
- The part is made inoperative, when exposed, through the use of interlocking devices; or
- The blower assembly must be withdrawn from the enclosure of the fireplace stove to expose the moving part.

### 27.3 Electrical protection

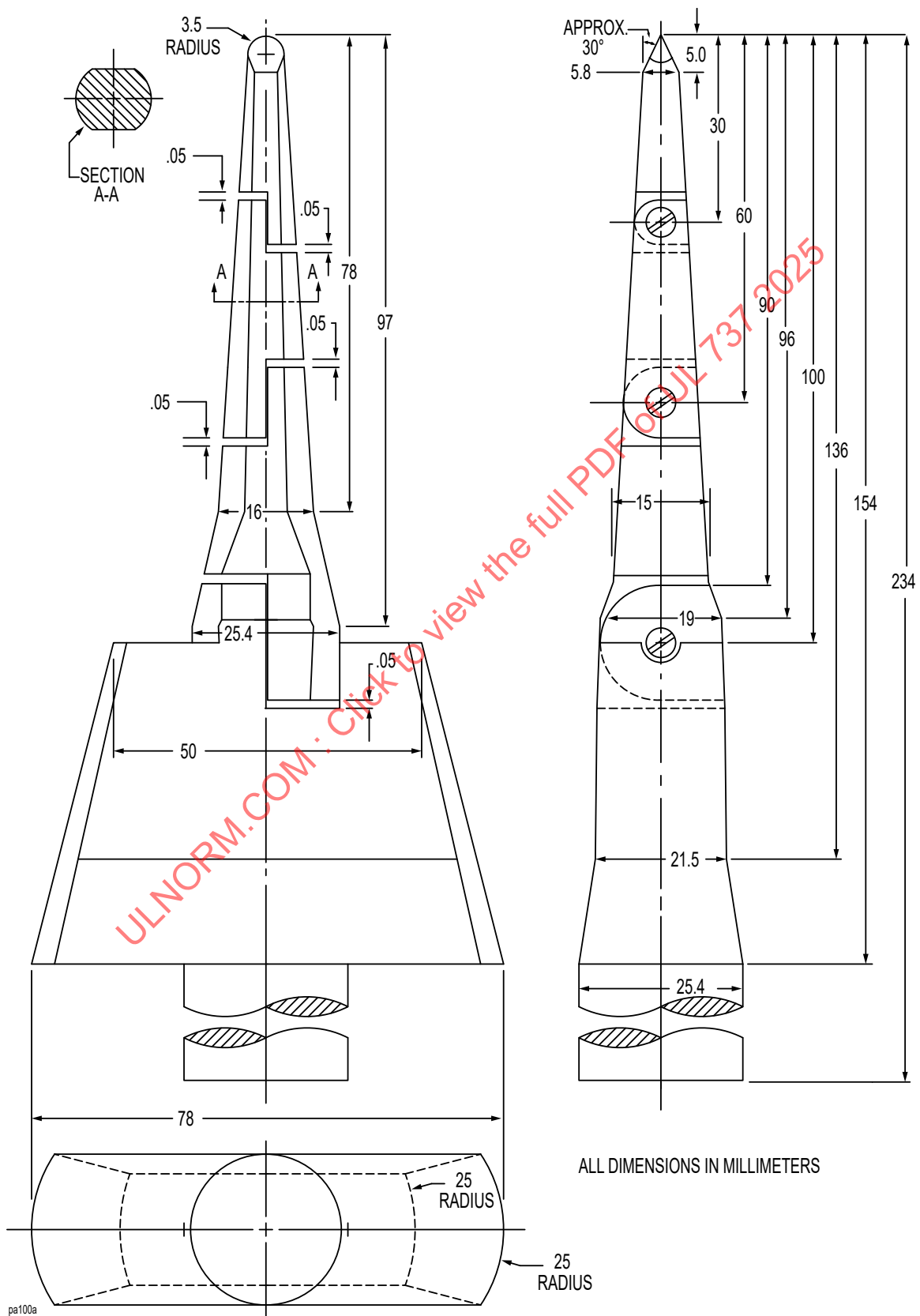
27.3.1 Louvers and other openings in the enclosure shall be constructed and located to reduce the risk of unintentional contact with uninsulated live parts. In determining compliance with this requirement, parts such as covers, panels and grilles used as part of the enclosure are to be removed unless tools are required for their removal or an interlock is provided.

27.3.2 Uninsulated high-voltage live parts shall be located, guarded or enclosed in compliance with the requirements in [27.3.3](#) – [27.3.5](#).

27.3.3 An opening in the enclosure of the product that shall not permit entrance of a 1 inch (25.4 mm) diameter rod is suitable when a probe as illustrated in [Figure 27.1](#), inserted into the opening, shall not touch any part that involves the risk of electric shock.

ULNORM.COM : Click to view the full PDF of UL 737 2025

**Figure 27.1**  
**Accessibility Probe**



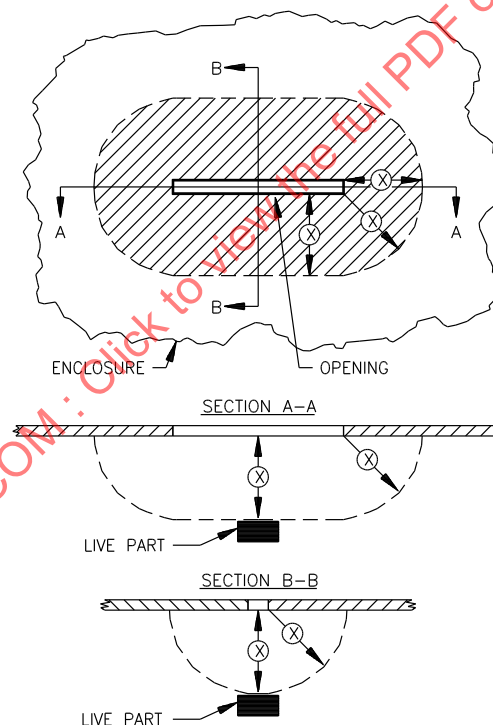
27.3.4 With respect to the requirement in [27.3.3](#), the probe shall be articulated into any configuration and shall be rotated or angled to any position before, during or after insertion into the opening, and the penetration shall be to any depth allowed by the opening size, including minimal depth combined with maximal articulation.

27.3.5 An opening in an enclosure, as illustrated in [Figure 27.2](#), that permits entrance of a 1 inch (25.4 mm) diameter round rod is suitable when, within the enclosure, there is no uninsulated live part or film-coated wire less than:

- a) R distance from the inside edge of the perimeter of the opening; and
- b) X distance from the plane of the opening.

T equals the enclosure thickness, R equals X minus T, and X equals five times the diameter of the largest round rod that can be inserted through the opening and not less than 6-1/16 inches (154 mm).

**Figure 27.2**  
**Opening in Enclosure**



EC100A

27.3.6 In addition to the requirements of [27.3.2](#) – [27.3.5](#), uninsulated live parts inside the enclosure that shall be contacted by persons performing operations such as replacing fuses, resetting manual-reset devices, replacing air filters, oiling motors, or other such service operations, shall be located, guarded or enclosed to reduce the risk of contact unless tools are required to expose the live part. See [54.10](#).

27.3.7 A fuseholder shall be constructed, installed, or guarded so that adjacent uninsulated high-voltage live parts, other than the screw shell of a plug fuseholder, cartridge fuse clips or wiring terminals to the fuseholder, shall not be exposed to contact by persons removing or replacing fuses. A barrier of

vulcanized fiber or similar material employed as a guard for uninsulated high-voltage live parts shall be not less than 1/32 inch (0.8 mm) thick. A separation of less than 4 inches (102 mm) is adjacent.

## 27.4 Doors and covers

27.4.1 Service covers or panels in the outer enclosure shall require the use of tools for removal or shall be provided with an interlocking mechanism when they give access to unenclosed uninsulated live parts or moving parts that result in injury to persons.

27.4.2 An interlocking mechanism that complies with the requirement in [27.4.1](#) shall:

- a) Be engaged in the closed position of the cover before parts are energized; and
- b) Secure the cover in the closed position when engaged.

27.4.3 A hinged panel or cover shall be positioned or arranged so that when it is in an open position it is not subjected to falling or swinging due to gravity or vibration so as to cause risk of injury to persons from the panel or cover or moving parts, or a risk of electric shock from uninsulated live parts.

27.4.4 The assembly shall be arranged so that an overcurrent protective device shall be replaced or reset without removing parts other than a service cover(s) or panel(s), and the cover or door enclosing the device.

27.4.5 A required protective device shall be inaccessible from outside the enclosure without requiring the opening of a door or cover.

*Exception: The operating handle of a circuit breaker, the reset button of a manually resettable motor protector, and similar parts are not prohibited from projects outside the enclosure.*

27.4.6 An opening in an outer enclosure around a handle, reset button, or other control member is shall not be employed unless the clearance between the control member and the edge of the opening is not more than 1/8 inch (3.2 mm) for any setting or position of the control member.

27.4.7 Covers for enclosures of fuses in high-voltage circuits shall be hinged, see [27.4.7](#). Covers for manual-reset overload protective device enclosures shall be hinged when required to open the cover to reset the device.

*Exception: A hinged cover is not required for extractor type fuses.*

27.4.8 A hinged cover shall not depend solely upon screws or other similar means to hold it closed, and shall be provided with a latch or the equivalent. A cover interlocking mechanism as described in [27.4.2](#) is capable of being used as the sole means for securing the cover or panel.

27.4.9 A spring latch, a magnetic latch, a dimple, or any other mechanical arrangement that holds the door in place and requires some effort on the user's part to open it is a means for holding the door in place as required in [27.4.1](#).

27.4.10 A door or cover giving direct access to fuses in other than low-voltage circuits shall shut closely against a 1/4 inch (6.4 mm) rabbet or shall have either turned flanges for the full length of four edges or angle strips fastened to it. Flanges or angle strips shall fit closely with the outside of the wall of the box and shall overlap the edges of the box not less than 1/2 inch (12.7 mm). Constructions include:

- a) A construction such as a fuse enclosure located within an outer enclosure; or

- b) A flange and rabbet combination that affords the equivalent protection.

## 28 Mounting of Electrical Components

28.1 A switch, an attachment-plug receptacle, a strain relief bushing, or similar component shall be secured in position and shall be prevented from turning. See [28.4](#). See [28.2](#) and [28.3](#) for exception.

28.2 A switch shall be prevented from turning unless all of the following conditions are met:

- a) The switch is of a plunger or other type that does not tend to rotate when operated. A toggle switch is subject to forces that tend to turn the switch during the operation of the switch;
- b) The switch is mounted so that operation of the switch does not loosen it;
- c) The spacings are not reduced below the minimum required values when the switch rotates; or
- d) Operation of the switch is by mechanical means rather than direct contact by persons.

28.3 A lampholder of a type in which the lamp shall not be replaced, such as a neon pilot or indicator light in which the lamp is sealed in a nonremovable jewel, are not required to be prevented from turning when rotation shall not reduce spacings below the minimum required values. See Spacings, Section [40](#).

28.4 The means for preventing rotation specified in [28.1](#) shall consist of more than friction between surfaces. A toothed lock washer that provides both spring take-up and an interference lock is capable of being used as means for preventing the turning of a small stem-mounted switch or other device having a single-hole mounting means.

28.5 An uninsulated current-carrying part and a part that supports a live part shall be secured to the base or mounting surface so that it shall be prevented from turning or shifting in position when such motion results in a reduction of spacings below the minimum required values. See Spacings, Section [40](#). Friction between surfaces shall not be employed as a means to prevent shifting or turning of a live part. A lock washer as described in [28.4](#) is suitable.

28.6 Flammable or electrically conductive thermal or acoustical insulation shall not contact uninsulated live parts.

## 29 Field-Installed Blower Assemblies

29.1 A fireplace stove having provision for the use of a blower assembly to be attached in the field shall be constructed so that the use of the assembly does not introduce a risk of fire, electric shock, or contact with moving parts that cause injury to persons.

29.2 The fireplace stove shall comply with the requirements of this Standard with and without the field-installed blower assembly installed.

29.3 Installation of the field-installed blower assembly by the user shall be restricted to an arrangement that is accomplished by means of receptacles and plug-in connectors.

*Exception: Low-voltage accessories shall be connected by other means, unless the installation does not require rearrangement of components or wiring, cutting or splicing of existing wiring, or soldered connections.*

29.4 The installation of a field-installed blower assembly by service personnel shall be by means of receptacles, plug-in connectors, insulated wire connectors, or by connection to existing wiring terminals.

29.5 With reference to the requirements in [29.4](#), any installation that requires the cutting of wiring or the soldering of connections by the installer is not suitable. Installations that require cutting, drilling or welding are not capable of being used in electrical enclosures or in other areas where such operations damage electrical or fireplace stove components and wiring within the enclosure.

29.6 Strain-relief means shall be provided for the wiring in the field-installed blower assembly when stress is transmitted to the terminal connections during installation.

29.7 All terminals and wiring intended to be field connected shall be identified on a field-installed blower assembly, on the fireplace stove when connections are made between the blower assembly and the fireplace stove, and on the wiring diagram(s).

29.8 Except where it is obvious, the mounting location of the field-installed blower assembly shall be indicated on the fireplace stove. When the mounting location is obvious due to the function of the blower assembly and arrangement of the fireplace stove, and instructions are provided covering the installation and location for the blower assembly, the mounting location of the blower assembly are not required to be indicated on the fireplace stove.

29.9 All mounting brackets, supports, and fasteners required to install the blower assembly shall be provided with the blower or as part of the appliance.

29.10 As part of the investigation, the blower assembly is to be trial-installed to determine that its installation is feasible, that the instructions are detailed and accurate, and that the use of the blower assembly does not introduce a risk of electric shock or unintentional contact with moving parts that cause injury to persons.

### **30 Field Supply Connections**

#### **30.1 Permanently-connected units**

30.1.1 As described in [30.1.2](#) – [30.1.4](#), field wiring terminals are terminals to which power supply, control, or equipment grounding connections are made in the field when the fireplace stove is installed as intended.

30.1.2 A blower assembly intended for permanent connection shall have provision for connection of one of the wiring systems that are required for it in accordance with NFPA 70.

30.1.3 The location of the required terminal box or compartment in which power supply connections are to be made shall permit these connections to be inspected after the unit is installed. The connections shall be accessible without removing parts other than a service cover or panel and the cover of the outlet box or compartment in which the connections are made.

30.1.4 A terminal compartment intended for the connection of a supply raceway shall be secured in position and shall not turn under conditions of intended use.

30.1.5 A blower assembly shall be provided with field wiring terminals for the connection of field wiring conductors of at least the size required by NFPA 70, corresponding to the rating of the assembly or with leads not less than 6 inches (152 mm) long except as noted in [30.1.15](#). It is assumed that branch circuit conductors rated 60 °C (140 °F) shall be used.

30.1.6 A field wiring terminal shall be prevented from turning or shifting in position by means other than friction between surfaces. This shall be accomplished by means such as two screws or rivets; by square shoulders or mortices; by a dowel pin, lug, or offset; or by a connecting strap or clip fitted into an adjacent part.



30.1.7 For 8 AWG (8.4 mm<sup>2</sup>) and larger conductors, pressure wire connectors shall be used. For 10 AWG (5.3 mm<sup>2</sup>) and smaller conductors, the parts to which wiring connections are made shall consist of pressure wire connectors, clamps or wire binding screws with cupped washers, terminal plates, or the equivalent to hold the wire in position.

30.1.8 A wire binding screw at a field wiring terminal shall be not smaller than No. 10 (4.8 mm diameter).

*Exception: A No. 8 (4.2 mm diameter) screw shall be used for the connection of one 14 AWG (2.1 mm<sup>2</sup>) and a No. 6 (3.5 mm diameter) screw shall be used for the connection of a 16 AWG (1.3 mm<sup>2</sup>) or 18 AWG (0.82 mm<sup>2</sup>) control circuit conductor.*

30.1.9 It shall be noted that according to NFPA 70, 14 AWG (2.1 mm<sup>2</sup>) is the smallest conductor that the installer shall use for branch circuit wiring and thus is the smallest conductor that shall be anticipated at a terminal for the connection of a power supply wire.

30.1.10 A terminal plate for a wire binding screw shall be of metal not less than 0.030 inch (0.76 mm) thick for a 14 AWG (2.1 mm<sup>2</sup>) or smaller wire and not less than 0.050 inch (1.27 mm) thick for a wire larger than 14 AWG. In either case, there shall be no less than two full threads in the metal.

30.1.11 A terminal plate formed from stock having the minimum required thickness shall have the metal extruded at the tapped hole for the binding screw to provide two full threads.

*Exception: Two full threads are not required when a lesser number of threads results in a connection in which the threads do not strip with tightening torque in accordance with the values indicated in UL 486A-486B.*

30.1.12 Upturned lugs or a cupped washer shall be able to retain a conductor of the size used for the field wiring leads under the head of the screw or the washer. A conductor used for the field wiring leads shall be not smaller than 14 AWG (2.1 mm<sup>2</sup>).

30.1.13 A wire binding screw shall thread into metal.

30.1.14 A field wiring terminal intended for the connection of a grounded conductor shall be of a metal, or plated with a metal substantially white in color and shall be readily distinguishable from the other terminals, or correct identification of that terminal shall be shown in some other manner, such as on an attached wiring diagram. A lead intended for the connection of a grounded conductor shall be finished to show a white or gray color, shall be readily distinguishable from other leads, and no other lead shall be so identified.

30.1.15 The length of a lead inside an outlet box or wiring compartment shall be 6 inches (152 mm) or more when the lead is intended for field connection to an external circuit.

*Exception: The lead shall be less than 6 inches in length when it is evident that the use of longer lead results in a risk of fire or electric shock.*

30.1.16 Leads intended for connection to an external circuit shall be provided with strain relief when stress on the lead transmits to terminals, splices or internal wiring. See Strain Relief Test, Section [48](#).

30.1.17 Leads provided for spliced connections to an external high-voltage circuit shall not be connected to wire binding screws or pressure wire connectors located in the same compartment as the splice unless the screws or connectors are rendered unusable for field wiring connections or the leads are insulated at the unconnected ends.

## 30.2 Cord-connected units

30.2.1 The marked rating of a cord-connected blower assembly shall not exceed 80 % of the rating of the attachment plug.

30.2.2 A cord-connected blower assembly shall employ grounding-type attachment plugs which comply with the NEMA designation in [Table 30.1](#), and be rated for the device.

30.2.3 A cord-connected blower assembly shall employ Type S, SJ, SO, SJO, SJT, SJTO, ST, STO, HSJ, or HSJO power supply cord rated for use at a voltage not less than the rated voltage of the product. The ampacity of the cord as given in the NFPA 70, shall be not less than the marked rating of the blower assembly.

30.2.4 The length of a power supply cord measured between any point at which the cord exits the blower assembly or fireplace stove cabinet and the attachment plug cap face shall be not less than 6 feet (1.8 m) nor greater than 8 feet (2.4 m).

**Table 30.1**  
**Attachment-Plug Cap Rating**

Amperes, volts	NEMA designation <sup>a</sup>
15, 125	5 – 15P
20, 125	5 – 20P
15, 250	6 – 15P
20, 250	6 – 20P
<sup>a</sup> As part of the Standard for Wiring Devices – Dimensional Requirements, NEMA WD 6.	

30.2.5 Means shall be provided to prevent the power supply cord from being pushed into the enclosure when such displacement would result in:

- a) Stress being transmitted to terminals, splices or other internal wiring;
- b) Live uninsulated parts being contacted;
- c) Reducing the spacing within the enclosure;
- d) The cord being subjected to damage from moving parts or to temperatures greater than its temperature rating, when moved inward; or
- e) Subjecting the supply cord, lead, or other internal connections or components to mechanical damage.

To determine compliance, the supply cord shall be tested in accordance with Section [49](#), Push Back Relief Test.

30.2.6 The edges of the entry hole for the power supply cord, including the cord entry hole in a bushing, shall be smooth and rounded without burrs, fins or sharp edges that damage the cord insulation. The power supply cord shall be routed to prevent damage to the cord insulation.

## 31 Grounding

### 31.1 General

31.1.1 A grounding means shall be provided for all equipment containing parts that require grounding, see Bonding for Grounding, Section [34](#).

31.1.2 The following constitute means for grounding:

- a) In a blower assembly intended to be permanently connected, an equipment grounding terminal.
- b) In a cord-connected blower assembly, an equipment grounding conductor in the cord.

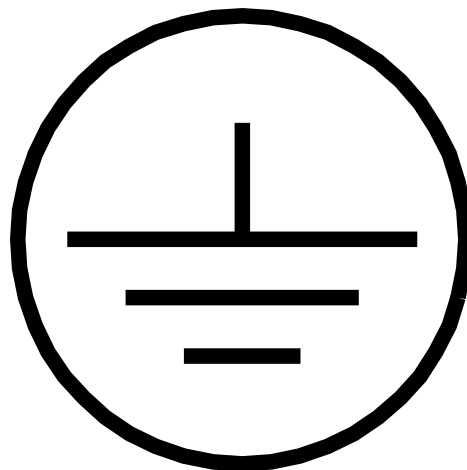
### 31.2 Permanently-connected units

31.2.1 The equipment grounding terminal shall be able to secure a conductor of the size required for the particular application in accordance with NFPA 70.

31.2.2 A soldering lug, a push-in connector, a screwless connector, or a quick-connect or similar friction fit connector shall not be used for the grounding terminal intended for the connection of field supply connections or for the grounding wire in a supply cord.

31.2.3 A wire binding screw intended for the connection of an equipment grounding conductor shall have a green-colored head that is hexagonal, slotted or both. A pressure wire connector intended for connection of such a conductor shall be plainly identified such as by being marked "G," "GR," "Ground," or "Grounding," the grounding symbol illustrated in [Figure 31.1](#), or by a marking on a wiring diagram provided on the fireplace stove. The wire binding screw or pressure wire connector shall be secured to the frame or enclosure of the fireplace stove and shall be located so that it shall not be removed during intended service operations, such as replacing fuses, resetting manual-reset devices or oiling motors. The wire binding screw or pressure wire connector shall be provided with a cupped head or cupped washer, or equivalent, of a size adequate to retain the equipment grounding conductor in place.

**Figure 31.1**  
**Grounding Symbol**



31.2.4 When a pressure wire connector intended for grounding is located where it could be mistaken for a neutral conductor of a grounded supply, it shall be identified by a marking EQUIPMENT GROUND or with a green color identification or both.

### 31.3 Cord-connected units

31.3.1 On a cord-connected fireplace stove, the grounding conductor of the flexible cord shall be finished with a continuous green color or with a continuous green color with one or more yellow stripes, and no other conductor shall be so identified.

31.3.2 The grounding conductor shall be secured to the frame or enclosure of the fireplace stove by a positive means, such as described in [34.8](#), that shall not be removed during any servicing operation not involving the power supply cord. The grounding conductor shall be connected to the grounding blade of the attachment plug.

## 32 Internal Wiring

### 32.1 General

32.1.1 For the purpose of these requirements, internal wiring all the interconnecting wiring beyond the wiring terminals or the leads intended for field wiring connections, and does not include the power supply cord even though some of it:

- a) Shall not be completely enclosed; or
- b) Shall be in the form of flexible cord.

32.1.2 The internal wiring of a blower assembly shall consist of wires of adequate size for the particular application with respect to:

- a) The temperature and voltage to which the wiring shall be subjected;
- b) Its exposure to oil or grease; and
- c) To other conditions of service to which it shall be subjected. A conductor, other than an integral part of a component, shall be not smaller than 18 AWG (0.8 mm<sup>2</sup>).

32.1.3 There is no temperature limit applicable to a conductor (except as noted in [Table 12.1](#)) provided with beads of noncarbonizable material or the equivalent.

32.1.4 Insulated wire employed for internal wiring shall be standard building wire, fixture wire, flexible cord, or appliance wiring material required for the particular application as described by these requirements.

32.1.5 Wire types for internal wiring include rubber insulated conductors, such as Types RH, RHH, and RHW; and thermoplastic insulated conductors, such as Types TW, THHN, THW, THWN, and MTW.

32.1.6 Fixture wires for internal wiring include rubber insulated conductors, such as Types RFH-2, SF-2, SFF-2, FF-2, and FFH-2; and thermoplastic insulated conductors, such as Types TF, TFF, TFN, and TFFN.

32.1.7 Flexible cords for internal wiring include Types HPN, HS, HSJ, HSJO, HSO, S, SJ, SJO, SJT, SJTO, SO, ST, STO, SP-2, SP-3, SPT-2, and SPT-3.

32.1.8 Appliance wiring material having thermoplastic insulation not less than 2/64 inch (0.8 mm) thick for 18 – 10 AWG (0.82 – 5.3 mm<sup>2</sup>), 3/64 inch (1.2 mm) thick for 8 AWG (8.3 mm<sup>2</sup>), and 4/64 inch (1.6 mm) thick for 6 – 2 AWG (13.3 – 33.6 mm<sup>2</sup>) is capable of being used for internal wiring.

32.1.9 Appliance wiring material having rubber, neoprene, or thermoplastic insulation with properties equivalent to the jacket of Types SJ, SJO, SJTO, or SJT cord, with an insulation thickness not less than 4/64 inch (1.59 mm) for 18 – 16 AWG (0.82 – 1.31 mm<sup>2</sup>), 5/64 inch (1.93 mm) for 14 – 10 AWG (2.08 – 5.3 mm<sup>2</sup>), is capable of being used for internal wiring where permitted by [32.2.6](#).

## 32.2 Methods

32.2.1 The wiring and connections between separate sections of a blower assembly shall be protected or enclosed, except that a flexible cord shall be employed for external interconnections, or for internal connections that are exposed during servicing when flexibility of the wiring is essential for servicing.

32.2.2 Internal wiring that is exposed through an opening in the enclosure of a fireplace stove is protected as required in [32.2.1](#), when after evaluation, as though it were film-coated wire, the wiring complies with the requirements in [27.3.1](#) – [27.3.5](#). Internal wiring within an enclosure is acceptable, even though it can be touched with the probe, if it is protected or guarded so that it cannot be grasped or hooked in a manner that would subject the wire to stress.

32.2.3 When the wiring of a blower assembly is located so that it is in proximity to combustible material or is subjected to mechanical damage, it shall be in metal-clad cable, rigid metal conduit, electrical metallic tubing, metal raceway, or shall otherwise be protected.

32.2.4 Except as indicated in [32.2.5](#) – [32.2.7](#), wiring in a compartment through which air, to or from the heated space, is circulated shall be in metal-clad cable, rigid metal conduit, flexible metal conduit, electrical metallic tubing, metal raceway, or shall otherwise be protected.

32.2.5 Lengths not exceeding 4 inches (102 mm), except as noted in [32.2.6](#), of unenclosed wiring of the types specified in [32.1.5](#), [32.1.6](#), and [32.1.8](#), or equivalent, shall be employed when they are enclosed within the unit enclosure and when they are supported to prevent damage from air movement.

32.2.6 Flexible cords, as specified in [32.1.7](#), or equivalent appliance wiring material, see [32.1.9](#), without limitation on length, shall be employed when protected as described in [32.2.5](#).

32.2.7 Neoprene or thermoplastic insulated appliance wiring material having 1/32 inch (0.33 mm) thick minimum conductor insulation is not required to be provided with protective enclosures or additional insulation as indicated in [32.2.4](#), when all of the following conditions are met:

- a) Wiring is not subject to movement by air or vibration.
- b) Where practicable individual leads are bunched together to form a cable.
- c) Wiring is secured to fixed panels or other surfaces at frequent intervals to assure proper routing and to prevent hooking of slack during routine service, such as replacing air filters, oiling motors, replacing fuses, or adjusting the settings of controls.
- d) Wiring is located in a compartment that is provided with a complete base pan or similar bottom closure.
- e) Wiring shall not be contacted through openings in the outer enclosure or cabinet when evaluated in accordance with [27.3.1](#) – [27.3.5](#).

32.2.8 Wiring shall be protected from sharp edges (including male screw threads), burrs, fins, moving parts, and other features that abrade the insulation on conductors. Clamping means shall have smooth, rounded surfaces.

32.2.9 A hole in a sheet metal wall within the overall enclosure of a blower assembly, through which insulated wires pass, shall be provided with a smooth, rounded bushing or shall have smooth, rounded surfaces upon which the wires shall bear, to prevent abrasion of the insulation. Bushings shall be fabricated from materials such as ceramic, phenolic, cold molded composition or fiber. A flexible cord used for external interconnection as specified in [32.2.1](#) shall be provided with bushings and strain relief in accordance with [32.2.11](#) – [32.2.14](#) unless the construction is such that the cord shall be protected from stress or motion.

32.2.10 Insulated wires shall be bunched and passed through a single opening in a metal wall within the enclosure of a blower assembly.

32.2.11 Strain relief shall be provided to prevent a mechanical stress on a flexible cord from being transmitted to terminals or splices.

32.2.12 Means shall be provided to prevent the flexible cord or lead from being pushed into the enclosure through the cord-entry hole when such displacement results in:

- a) Stress being transmitted to terminals, splices or other internal wiring;
- b) Live uninsulated parts being contacted;
- c) Reducing the spacings within the enclosure;
- d) The cord being subjected to damage from moving parts or to temperatures greater than its temperature rating, when moved inward; or
- e) Subjecting the supply cord, lead, or other internal connections or components to mechanical damage.

To determine compliance, the supply cord or lead shall be tested in accordance with Section [49](#), Push-Back Relief Test.

32.2.13 At a point where a flexible cord passes through an opening in a wall, barrier, or enclosing case, there shall be a bushing or the equivalent secured in place, and the bushing shall have a smooth, rounded surface against which the cord shall bear. The heat and moisture-resistant properties of the bushing material shall be capable of being used for the particular application.

32.2.14 A smoothly rounded hole in the wall or barrier is capable of being used in lieu of a separate bushing.

32.2.15 A splice or connection shall be mechanically secure. A soldered connection shall be made mechanically secure before being soldered.

32.2.16 A splice shall be located within the unit enclosure. It shall be secured to a fixed member or located in a separate enclosure when it is subjected to flexing motion or vibration due to air movement or is moved during service operations, such as replacing fuses or oiling motors.

32.2.17 A splice shall be provided with electrical insulation equivalent to that of the conductors when spacings between the splice and other metal parts are not maintained. Thermoplastic tape shall not be wrapped over sharp ends of wires.

32.2.18 The means of connecting stranded internal wiring to a wire binding screw shall prevent loose strands of wire:

- a) From contacting other live parts that are not always of the same polarity as the wire; and
- b) From contacting dead metal parts.

This shall be accomplished by use of pressure terminal connectors, soldering lugs, crimped eyelets, soldering all strands of the wire, or other similar means.

32.2.19 A splicing device such as a pressure-type wire connector shall be employed when it complies with UL 486A-486B.

32.2.20 A quick-connecting assembly shall form a secure electrical connection, such as by detents in the mating parts, and shall be rated for the current involved. Securement of connections shall be determined by engagement/disengagement tests as specified in UL 310.

### 33 Separation of Circuits

33.1 Unless provided with insulation rated for the highest voltage involved, insulated conductors of different circuits, for example, internal wiring that includes wires in a wiring compartment, shall be separated from each other by barriers or shall be physically segregated, and shall be separated or segregated from uninsulated live parts connected to different circuits.

33.2 Segregation of insulated conductors shall be accomplished by clamping, routing or other means to provide for separation from insulated or uninsulated live parts of a different circuit.

33.3 Field-installed conductors of any circuit shall be either segregated or separated by barriers from field-installed and factory-installed conductors connected to any other circuit unless the conductors of both circuits are insulated for the maximum voltage of either circuit.

33.4 Except at wiring terminals, field-installed conductors of a high-voltage circuit or a low-voltage circuit with Class 1 NFPA 70, wiring shall be segregated or separated by barriers:

- a) From uninsulated live parts connected to a different circuit; and
- b) From any uninsulated live parts of electrical components, such as a motor overload protective device, or other protective device, where short-circuiting or grounding shall result in impaired operation of the fireplace stove.

33.5 Field-installed conductors of a low-voltage circuit with Class 2 NFPA 70, wiring shall be segregated or separated by barriers as follows:

- a) From insulated live parts connected to a high-voltage circuit; and
- b) From wiring terminals and any other uninsulated live parts of low-voltage electrical components, such as a motor overload protective device, or other protective device, where short-circuiting or grounding results in operation of the fireplace stove that increases the risk of fire or electric shock.

33.6 When a barrier is used to provide separation between the wiring of different circuits, it shall be of metal or of a rigid insulating material secured in place.



### 34 Bonding for Grounding

34.1 Exposed or accessible noncurrent-carrying metal parts that become energized, and that are contacted by the user or by service personnel during service operations performed while the equipment is energized, shall be electrically connected to the point of connection of an equipment ground.

34.2 Except as indicated in [34.3](#), uninsulated metal parts of cabinets, electrical enclosures, motor frames and mounting brackets, controller mounting brackets, capacitors and other electrical components, are to be bonded for grounding when they are located such that contact by the user or serviceman will occur.

34.3 The following metal parts as described below are not required to be grounded:

- a) Adhesive-attached metal-foil markings, screws, handles, or similar items, that are located on the outside of enclosure or cabinets and isolated from electrical components or wiring by grounded metal parts.
- b) Isolated metal parts, such as magnet frames and armatures, or small assembly screws that are separated from wiring and uninsulated live parts.
- c) Panels and covers that do not enclose uninsulated live parts, when insulated parts and wiring are separated from the panel or cover.
- d) Panels and covers that are insulated from electrical components and wiring by an attached insulating barrier of vulcanized fiber, varnished cloth, phenolic composition, or similar material not less than 1/32 inch (0.8 mm) thick.

34.4 When a component, such as a switch, becomes separated from its intended grounding means for purposes of testing or adjustment while the equipment is energized, it shall be provided with a grounding conductor not requiring removal for such service.

34.5 Splices shall not be employed in wire conductors used for bonding.

34.6 Metal-to-metal hinge bearing members is a means for bonding a door for grounding.

34.7 A separate bonding conductor shall be of material rated for use as an electrical conductor. Ferrous metal parts in the grounding path shall be protected against corrosion by enameling, galvanizing, plating, or equivalent means. A separate bonding conductor or strap shall:

- a) Be protected from mechanical damage, such as by being located within the confines of the outer enclosure or frame; and
- b) Not be secured by a removable fastener used for any purpose other than bonding for grounding, unless the bonding conductor shall not be omitted after removal and replacement of the fastener.

34.8 The bonding shall be by a positive means, such as by clamping, riveting, bolted or screwed connection, or by welding, soldering, or brazing with materials having a softening or melting point greater than 454 °C (850 °F). The bonding connection shall penetrate nonconductive coatings, such as paint or vitreous enamel. Bonding around a resilient mount shall not depend on the clamping action of rubber or similar material, except as indicated in [34.10](#).

34.9 A bolted or screwed connection that incorporates a star washer or serrations under the screwhead is capable of being used for penetrating nonconductive coatings where required for compliance with the requirements in [34.8](#).



34.10 A connection shall not depend upon the clamping action exerted by rubber or similar materials unless it complies with the requirements in [34.12](#) under any degree of compression permitted by a variable clamping device, and after exposure to the effects of oil, grease, moisture, and thermal degradation that occur in service. The effect of assembling and disassembling such a clamping device for maintenance purposes is to be evaluated to verify the clamping device is capable of being reassembled in its intended position.

34.11 When bonding depends on screw threads, two or more screws or two full threads of a single screw shall engage the metal.

34.12 When the adequacy of a bonding connection shall not be determined by examination, or when a bonding conductor is smaller than required by [34.13](#) – [34.15](#), the connecting means shall not open while carrying for 2 minutes twice the current equal to the rating of the branch circuit overcurrent device required to protect the equipment.

34.13 The size of a conductor or strap employed to bond an electrical enclosure or motor frame shall be based on the rating of the branch circuit overcurrent device to which the equipment shall be connected. Except as indicated in [34.12](#), the size of the conductor or strap shall be in accordance with [Table 34.1](#).

**Table 34.1**  
**Bonding Wire Conductor Size**

Rating of overcurrent device, amperes	Size of bonding conductor <sup>a</sup>			
	Copper wire		Aluminum wire	
	AWG	(mm <sup>2</sup> )	AWG	(mm <sup>2</sup> )
15	14	(2.1)	12	(3.3)
20	12	(3.3)	10	(5.3)
30	10	(5.3)	8	(8.4)

<sup>a</sup> Or equivalent cross-sectional area.

34.14 A bonding conductor to a component or electrical enclosure is not required to be larger than the size of the conductors supplying power to the component or components within the enclosure.

34.15 All exposed dead metal parts that shall become energized shall be electrically connected to the bonding conductor of the power supply cord(s).

34.16 The grounding conductor of a power supply cord shall be attached to the grounding blade of an attachment-plug cap of the grounding type and shall be connected within the confines of the frame or enclosure of the blower assembly by means of a screw that shall not be removed during servicing not involving the power supply cord. The grounding conductor shall be arranged so that an external pull on the power supply cord shall not transmit stress to the grounding connection on the frame or enclosure before the high-voltage connections are broken.

## 35 Capacitors

35.1 A motor starting or running capacitor shall be housed within an enclosure or container to reduce the risk of:

- a) Mechanical damage of the plates; and
- b) The emission of flame or molten material resulting from malfunctioning of the capacitor.

The container shall be of metal providing the strength and protection not less than that of uncoated steel having a thickness of 0.020 inch (0.51 mm). See [35.2](#) for exception.

35.2 The individual container of a capacitor shall be of sheet metal having a thickness less than that specified in [35.1](#) or shall be of material other than metal when the capacitor is mounted within the enclosure of the blower assembly or within an enclosure that houses other parts of the blower assembly.

35.3 When the container of an electrolytic capacitor is metal, the container shall be evaluated as a live part and shall be provided with moisture-resistant electrical insulation to isolate it from dead metal parts and to reduce the risk of a person contacting it during servicing operations. The insulating material shall be not less than 1/32 inch (0.8 mm) thick.

35.4 A capacitor employing a liquid dielectric medium more combustible than askarel shall be protected against expulsion of the dielectric medium when tested in accordance with the applicable performance requirements of this Standard, including faulted overcurrent conditions based on the circuit in which it is used. See Short-Circuit Test, Section [50](#).

*Exception: When the available fault current is limited by other components in the circuit, such as a motor start winding, the capacitor shall be tested using a fault current less than the test current specified in [50.1](#) and not less than the current established by dividing the circuit voltage by the impedance of the other component(s).*

## 36 Insulating Material

36.1 Material for the mounting of uninsulated live parts shall be porcelain, phenolic composition or similar material.

36.2 Vulcanized fiber shall be used for insulating bushings, washers, separators, and barriers, and not as the sole support for uninsulated live parts where shrinkage, current leakage, or warpage introduces a risk of electric shock. Polymeric materials shall be capable of being used for the sole support of uninsulated live parts when found to have adequate mechanical strength and rigidity, resistance to heat, resistance to flame propagation, dielectric withstand, and other factors involved with condition of actual service. All of these factors are to be evaluated with respect to thermal aging.

## 37 Motors and Motor Overcurrent (Overload) Protection

37.1 All motors shall be protected by self-impedance, an integral thermal protector, overcurrent protective devices, or by combinations thereof.

37.2 Overcurrent protective devices as referred to in [37.1](#) are those complying with the requirements of NFPA 70, as follows:

- a) A separate overcurrent device responsive to motor current. This device shall be rated or specified to trip at no more than the percent of the motor full-load current rating indicated in Column A of [Table 37.1](#). Each winding of a multispeed motor is to be evaluated separately and the motor is to be protected at all speeds.
- b) When the values specified for motor running overcurrent protection do not correspond to the standard sizes or ratings of fuses or magnetic or thermal overload protective devices, the next higher size of rating shall be used, and not higher than the percent of motor full-load current rating indicated in Column B of [Table 37.1](#).